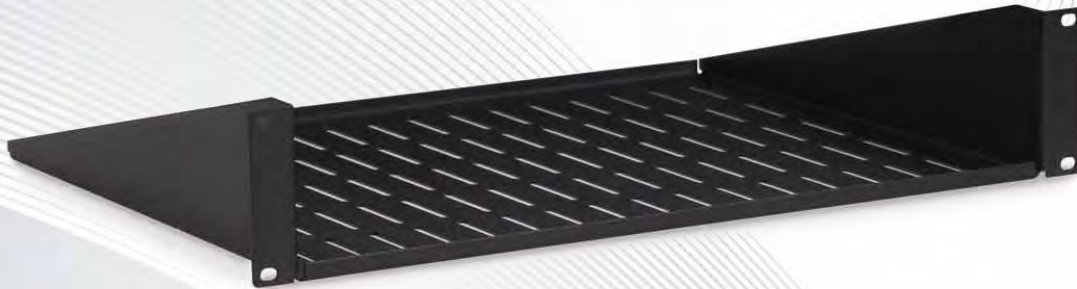


## MEDIUM DUTY ECO SHELF



The Kendall Howard 2U 14" Vented Eco Shelf is a medium duty shelf that helps to maintain proper air circulation in your racks and cabinets. Rated to hold up to 50lbs., this cantilever rack shelf is perfect for supporting monitors, switches and other lightweight network or A/V equipment.

### FEATURES

**Medium Duty** - Constructed of a medium gauge steel providing a quality shelf to support your non-rack mount equipment at a cost conscious price point.

**Easy to Install** - Four (4) mounting holes can be used with rack screws (and cage nuts if needed) to easily install in tapped or cage nut style mounting rails.

**2-Point Mounting** - Cantilever or two-point rack shelf is perfect for use in two-post racks, wall mount racks, and cabinets.

**Rounded Corners** - Rounded corners eliminate sharp edges which could potentially damage equipment, cabling, or installer's hands while handling.

**Ventilation** - Vented slots allow air to circulate through this shelf, which assists in keeping air flowing properly within your rack or cabinet.

### SPECIFICATIONS

Part Number	1906-1-010-02	Material(s)	CRS (Cold Rolled Steel)
Weight Capacity	50 lbs.	Finish/Color	Black Powder Coated Finish
Depth	14"	UPC	879447002010
Width	19"	Warranty	Limited Lifetime Warranty
Height	3.47"	Shipping Method	FedEx Ground

### DOUBLE PACK SPECIFICATIONS

Part Number	1906-3-222-02	Material(s)	CRS (Cold Rolled Steel)
Weight Capacity	50 lbs.	Finish/Color	Black Powder Coated Finish
Depth	14"	UPC	879447002072
Width	19"	Warranty	Limited Lifetime Warranty
Height	3.47"	Shipping Method	FedEx Ground