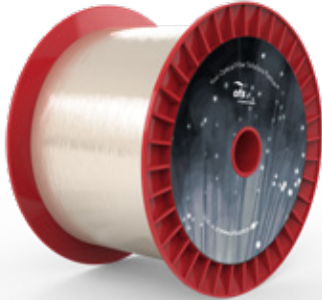


## RightWave® EDF25-PM EC Optical Fiber

P/N: 27242



### Overview

The OFS family of RightWave Erbium-Doped optical fibers offers several polarization maintaining designs. The polarization maintaining property of RightWave EDF25-PM EC is achieved using an elliptical core (EC). It has a peak absorption of 25 dB/m @ 1530 nm.

### Typical Applications

Fiber Lasers and  
Polarization-Maintaining  
Amplifiers

Product Specifications	
Product Description	RightWave EDF25-PM EC Optical Fiber
Physical Characteristics	
Cladding Diameter	125 µm
Coating Diameter	245 µm
Optical Characteristics	
Type	Other Doped Fibers
PM Fiber Type	Elliptical Core
Cutoff Wavelength	1150 nm
Peak Absorption @ 1530 nm	25 dB/m
Mode Field Diameter @ 1550 nm	5.2 ± 0.7 µm
Birefringence @ 1550 nm	1 x 10 <sup>-4</sup> (Geometrically Induced from Elliptical Core)
h-parameter of m <sup>-1</sup>	3 x 10 <sup>-4</sup> m <sup>-1</sup>
Numerical Aperture	0.27 ± 0.02
PM or SM	PM
Mechanical and Environmental	
Proof Test Level	200 kpsi
Order by Part Number	<b>27242</b>
<b>OPTIONS:</b> Coils, Colored or Natural Buffers, Custom Designs	

**For additional information please contact your sales representative.**

You can also visit our website at [www.ofsoptics.com](http://www.ofsoptics.com) or call 1-888-fiberhelp (1-888-342-3743) USA or 1-770-798-5555 outside the USA.



Copyright © 2019 OFS Fitel, LLC.  
All rights reserved, printed in USA.

OFS Marketing Communications  
Date: 11/19



RightWave is a registered trademark of OFS Fitel, LLC. OFS reserves the right to make changes to the prices and product(s) described in this document at any time without notice. This document is for informational purposes only and is not intended to modify or supplement any OFS warranties or specifications relating to any of its products or services.