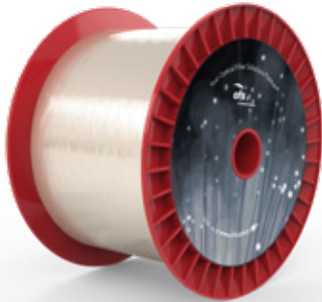


## RightWave® EDF R37003X Optical Fiber

P/N: 27270



### Overview

The RightWave EDF portfolio has a broad EDF product line with each fiber type optimized for different applications.

RightWave EDF R37003X is a high efficiency fiber designed for pump powers in the range 25-300mW. This product has a broad gain profile, excellent spectral reproducibility and bath-to-batch uniformity, supported by precision characterization in a real DWDM amplifier setup. The fiber is designed for improved splice performance for low splice loss.

### Typical Applications

25-300 mW Pump Power  
@ 980 nm  
CATV and DWDM Systems  
Optical Amplifiers  
Splicing Applications



A Furukawa Company

# RightWave® EDF R37003X Optical Fiber

P/N: 27270

Product Specifications	
Product Description	RightWave EDF R37003X Optical Fiber
<b>Physical Characteristics</b>	
Cladding Diameter	125 µm
Coating Diameter	245 µm
Core/Cladding Concentricity Error	< 0.3 µm
Core Diameter	2.9 µm
Clad Non-Circularity	< 1%
Core Concentricity Error	<0.3 µm
Coating Non-Circularity	< 2.5%
Coating/Cladding Concentricity Error	< 16 µm
<b>Optical Characteristics</b>	
Type	Erbium-Doped Fibers for C-Band
Cutoff Wavelength	840 to 960 nm
Peak Absorption @ 1530 nm	7.0 ± 1.0 dB/m
Mode Field Diameter @ 1550 nm	5.3 ± 0.7 µm
PMD (Typical)	2 fs/m
Absorption Variation Over 1000 m Reel	≤ 2 %
Spectral Variation	≤ 0.75%
Loss @ 1200 nm	< 10 dB/km
Numerical Aperture	0.26 ± 0.02
PM or SM	SM
QCE (Typical)	> 0.8
<b>Mechanical and Environmental</b>	
Proof Test Level	≥ 200 kpsi (1.38 GPa)
Order by Part Number	<b>27270</b>

**OPTIONS:** Coils or Spools, Color-Coded Buffers, Custom Designs, Fibers Available in Long Lengths on Standard Spools, Fibers Available in Predetermined Lengths and Coiled to Given Diameters, Fibers Available with Natural or Colored Buffer, Fibers May be Customized to Suit Your Specific Application

**NOTE:** Compatible with OASiX® Software Package: Accurate prediction of EDF performance is essential to applications design. OFS offers specialized OASiX Amplifier Simulation System Software, which allows the designer to predict EDFA performance at all pump powers for the specific lot of EDF purchased. OASiX is also available in a DLL version for compatibility with external optimization tools.

**For additional information please contact your sales representative.**

You can also visit our website at [www.ofsoptics.com](http://www.ofsoptics.com) or call 1-888-fiberhelp (1-888-342-3743) USA or 1-770-798-5555 outside the USA.



Copyright © 2019 OFS Fitel, LLC.  
All rights reserved, printed in USA.

OFS Marketing Communications  
Date: 11/19



RightWave and OASiX are registered trademarks of OFS Fitel, LLC. OFS reserves the right to make changes to the prices and product(s) described in this document at any time without notice. This document is for informational purposes only and is not intended to modify or supplement any OFS warranties or specifications relating to any of its products or services.