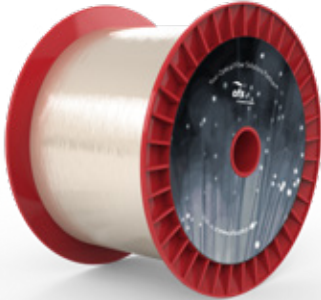


RightWave® EDF150 Optical Fiber for Fiber Lasers

P/N: 27307



Overview

The OFS family of RightWave Erbium-Doped Optical Fibers are highly doped and designed for specific use in fiber laser construction. RightWave EDF150 has a peak absorption @ 1530 nm of 150 dB/m and ~ -48 ps/(nm·km) dispersion @ 1550 nm.

Typical Applications

Very Short Lengths
Inside a Laser Cavity



A Furukawa Company

RightWave® EDF150 Optical Fiber for Fiber Lasers

P/N: 27307

Product Specifications	
Product Description	RightWave EDF150 Optical Fiber
Physical Characteristics	
Cladding Diameter	125 µm
Coating Diameter	245 µm
Optical Characteristics	
Type	Other Doped Fibers
Cutoff Wavelength	925 nm
Peak Absorption @ 1530 nm	150 dB/m
Mode Field Diameter @ 1550 nm	4.3 ± 0.7 µm
Numerical Aperture	0.28 ± 0.02
Dispersion @ 1550 nm	~-48 ps/(nm·km)
PM or SM	SM
Mechanical and Environmental	
Proof Test Level	2%
Order by Part Number	27307
OPTIONS: Coils, Colored or Natural Buffers, Custom Designs	

For additional information please contact your sales representative.

You can also visit our website at www.ofsoptics.com or call 1-888-fiberhelp (1-888-342-3743) USA or 1-770-798-5555 outside the USA.



Copyright © 2019 OFS Fitel, LLC.
All rights reserved, printed in USA.

OFS Marketing Communications
Date: 11/19



RightWave is a registered trademark of OFS Fitel, LLC. OFS reserves the right to make changes to the prices and product(s) described in this document at any time without notice. This document is for informational purposes only and is not intended to modify or supplement any OFS warranties or specifications relating to any of its products or services.