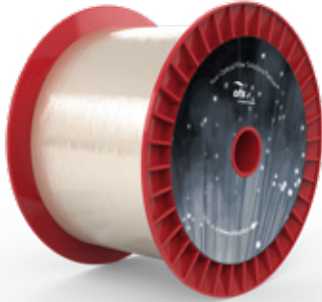


ClearLite® 980 16 125/250 Optical Fiber

P/N: 86377 - BF05365-02



Features

- Tight geometrical tolerances
- Excellent uniformity and consistency
- Low splice loss
- Dual layer acrylate
- High proof test level for mechanical reliability

Typical Applications

- Fused Fiber and WDM Pump/ Signal Couplers
- Optical Components, e.g. Laser Diode Pigtailed
- EDFAs

Product Specifications

Product Description	ClearLite 980 16 125/250 Optical Fiber
Optical Characteristics	
Operating Wavelength	980 nm and 1550 nm
Cutoff Wavelength	≤ 960 nm
Mode Field Diameter @ 1550 nm	7.5 ± 0.75 μm
Mode Field Diameter @ 980 nm	5.0 ± 0.3 μm
Attenuation @ 1550 nm	≤ 0.5 dB/km
Attenuation @ 980 nm	≤ 3 dB/km
Numerical Aperture (Nominal)	0.16
Physical Characteristics	
Coating Material	Dual UV Acrylate
Cladding Diameter	125 ± 1 μm
Coating/Buffer Diameter	250 ± 15 μm
Clad Non-Circularity	≤ 2.0%
Core/Clad Offset	≤ 0.3 μm
Mechanical and Environmental	
Operating Temperature	-40 to +85 °C
Proof Test Level	≥ 200 kpsi (1.38 GPa)
Other Information	
Order by Part Number	86377 - BF05365-02
Product Description	ClearLite 980 16 125/250
Regulatory Compliance	REACH and RoHS Compliant
Quality Certification	ISO 9001 Certified

For additional information please contact your sales representative.

You can also visit our website at www.ofsoptics.com or call 1-888-fiberhelp (1-888-342-3743) USA or 1-770-798-5555 outside the USA.