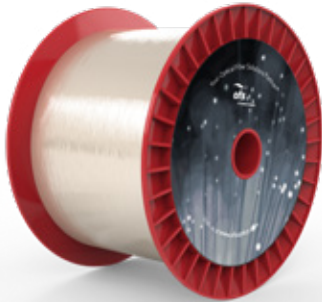




A Furukawa Company

HCS® 125 μm Low OH Optical Fiber

P/N: CF01493-09



Overview

HCS® (Hard-Clad Silica) is a polymer coated optical fiber system invented by us in the early years of the optical fiber industry. A proprietary polymer is applied to the pristine surface of pure, fused silica as we draw the glass down to its final, step-index, multimode optical fiber form. We then add additional buffer layers to improve chemical and abrasion resistance. This final step increases the finished diameter to a dimension that is easier for field-technicians to handle.

HCS is optimized for use at the 650 and 850 nm wavelengths which are common in transceivers deployed in many industrial applications. The pure silica core is highly transparent. This makes HCS fiber suitable for use over a very broad range of optical wavelengths and in a variety of applications beyond data communications such as fiber optic sensors, spectroscopy and laser delivery.

HCS optical fiber characteristics:

- High mechanical strength
- Bend insensitivity
- Crimp-on connector capability similar to electrical wires
- Resistance to harsh chemicals commonly found in industry
- Wide operating temperature range
- Superior crush, twist and flex performance
- Long term reliability
- Ease of handling

HCS fibers have a high core-to-clad ratio. By using a very thin cladding layer, light transmitting devices are connected to a large core area that efficiently couples more of the optical energy into and along the fiber. This enables systems designers to take advantage of lower cost transceivers and simplified connectors to minimize overall systems expense.

A distinct advantage of HCS optical fiber is the OFS Crimp & Cleave termination method. Our durable polymer enables field technicians to connectorize fibers and cables by crimping connectors directly onto the fiber's cladding and then cleaving the glass fiber. Like electrical connections, reliable handheld tools are used; no power, no epoxies, no polishing. Quick, easy, and durable.

Typical Applications

High-Power Laser Delivery
Short-to-Medium Distance
Communications (Up to 3 km)
Avionics Communications
Medical Sensing
Factory Automation
Laser Therapy and Surgery
Near-IR Spectroscopy
Optical Pyrometry
Nuclear Plasma Diagnostics

Product Specifications	
Product Description	125 0.37 NA Low OH
Physical Characteristics	
Core Diameter	125 ± 5 µm
HCS® Cladding Diameter	140 +2/-5 µm
ETFE Buffer Diameter	250 +50/-0 µm
Core/Clad Offset	≤ 5.0 µm
Crimp & Cleave Compatible	No
Cladding Material	HCS fluoroacrylate
Buffer Material	ETFE
Optical Characteristics	
Type	Multimode Step-Index
Numerical Aperture	0.37
Attenuation @ 850 nm	≤ 12 dB/km
Water Content	Low OH
Mechanical and Environmental	
Operating Temperature	-65 to +125 °C
Short-Term Bend Radius	≥ 9 mm
Long-Term Bend Radius	≥ 15 mm
Proof Test Level	≥ 100 kpsi (0.689 GPa)
Order by Part Number	CF01493-09
Description Code	HCP-M0125T
OPTIONS: Buffer Color, Buffer Diameter, Buffer Material, Proof Test	

For additional information please contact your sales representative.

You can also visit our website at www.ofsoptics.com or call 1-888-fiberhelp (1-888-342-3743) USA or 1-770-798-5555 outside the USA.



Copyright © 2019 OFS Fitel, LLC.
All rights reserved, printed in USA.

OFS Marketing Communications
Date: 11/19



HCS is a registered trademark of OFS Fitel, LLC. OFS reserves the right to make changes to the prices and product(s) described in this document at any time without notice. This document is for informational purposes only and is not intended to modify or supplement any OFS warranties or specifications relating to any of its products or services.