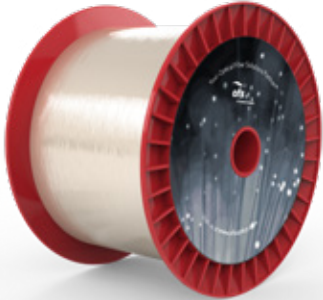


ClearLite® MICRO 1310 16S NA Optical Fiber

P/N: CF04246-31



Overview

This optical fiber with a NA of 0.16 operates efficiently at both 1310 and 1550 nm. A 0.21 NA version of this fiber is available for enhanced bend performance.

Typical Applications

Gyroscopes
Sensors
Tap Couplers
WDM Pump/Signal Couplers



A Furukawa Company

ClearLite® MICRO 1310 16S NA Optical Fiber

P/N: CF04246-31

Product Specifications	
Product Description	ClearLite MICRO 1310 16S NA Optical Fiber
Physical Characteristics	
Coating Material	Single UV Acrylate
Core Diameter (Nominal)	6.0 μm
Cladding Diameter	80 ± 1 μm
Coating/Buffer Diameter	135 ± 5 μm
Clad Non-Circularity	≤ 2.0%
Core/Clad Offset	≤ 0.5 μm
Optical Characteristics	
Type	Single-Mode
Operating Wavelength	1310/1550 nm
Cutoff Wavelength	≤ 1310 nm
Mode Field Diameter @ 1310 nm	6.7 ± 0.75 μm
Mode Field Diameter @ 1550 nm	7.5 μm (Nominal)
Attenuation @ 1310 nm	≤ 0.75 dB/km
Attenuation @ 1550 nm	≤ 0.5 dB/km
Numerical Aperture (Nominal)	0.16
Mechanical and Environmental	
Operating Temperature	-40 to +85 °C
Short-Term Bend Radius	≥ 7 mm
Long-Term Bend Radius	≥ 11 mm
Proof Test Level	≥ 200 kpsi (1.38 GPa)
Order by Part Number	CF04246-31
Product Description Code	SMM-D1310A
OPTIONS: Buffer Color, Buffer Material, Buffer Size, Cutoff Wavelength, Metalization, Proof Test, Termination	

For additional information please contact your sales representative.

You can also visit our website at www.ofsoptics.com or call 1-888-fiberhelp (1-888-342-3743) USA or 1-770-798-5555 outside the USA.



Copyright © 2019 OFS Fitel, LLC.
All rights reserved, printed in USA.

OFS Marketing Communications
Date: 1119



ClearLite is a registered trademark of OFS Fitel, LLC. OFS reserves the right to make changes to the prices and product(s) described in this document at any time without notice. This document is for informational purposes only and is not intended to modify or supplement any OFS warranties or specifications relating to any of its products or services.