



A Furukawa Company

LC Connector Family

Simplifying Adds, Moves, and Changes with a High Density Solution



LC Connector Family

Features

- Half the size of the standard connectors
- RJ45 push-pull style housing
- Polarized
- Pull-proof
- PC finish
- Anti-snag latch
- Minimal polish

Benefits

- Doubles fiber density in shelves and outlets – lowering system costs
- Allows easy disengagement in dense spaces
- Assures high repeatability, maintains transmit/receive direction
- Maintains optical contact under loads, and helps prevent accidental disconnects
- Helps minimize transmission problems. Optimizes optical contact
- Improves durability and reduces cross-connect rearrangement effort
- Reduces installation time for field mountable connectors

Applications

- Telecommunications Networks
- Local Area Networks
- Data Processing Networks
- Device Terminations
- Premises Distribution
- Cable Television
- Fiber-to-the-Home
- Fiber-to-the-Desktop

Product Description

OFS listened to our customers, and responded by delivering the next generation fiber optic LC Connector Solution for private and public networks. The LC Connector Solution was developed in response to customer needs for smaller and easier-to-use fiber optic connectivity. OFS Labs created a solution that reduces the space required on panels, outlets, and in closets by 50% throughout the network.

It simplifies moves, adds, and changes and saves you money. The LC Connector uses an improved version of the familiar, user-friendly telephone plug, which provides a reassuring, audible click when engaged. The unique combination of small size and the click of connectivity makes the LC Connector the right choice for your network.

Designed to work together, the LC Solution is a complete family of products designed to offer the optimal, high-density solution for private and public networks. The LC Solution is Telcordia, ANSI/EIA/TIA and IEC compliant.

The LC fiber optic family consists of:

- Field Mountable Connectors
- Simplex Patchcords
- Duplex Patchcords
- Hybrid Patchcords
- Pigtails
- Duplex Adapters
- Simplex Adapters
- LIU and LGX® Panels
- Collar with adapters for MULTIMAX Panel and Outlets
- Tool and Consumable Kits

LC Connector

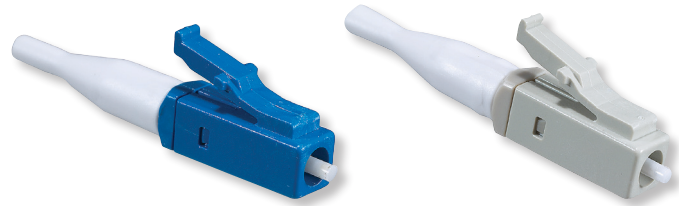
The LC Connector, developed by OFS Laboratories, represents the next generation small form factor (SFF) connector. The LC Connector Solution reduces the space required on panels, outlets and in closets by approximately 50% throughout the network. It simplifies moves, adds and changes and helps save you money. The LC Connector uses an improved version of the familiar, user-friendly RJ-style telephone plug that provides a reassuring, audible click when engaged. The new, one-piece design enhances the connector's durability and meets side-load requirements of standard 2.5 mm connectors. The connector can only be installed into the adapter in one orientation thus maintaining proper polarization and alignment. The straight-in motion significantly reduces debris and enhances optical performance. The unique combination of small size and the click of connectivity make our LC Connector the right choice for today's high performance networks.

Two versions are available. The jumper connector is designed for 1.6 to 2.0 mm cordage. A trigger as well as the standard latch make the jumper connector easy to engage and disengage. The behind-the-wall (BTW) version is designed to mount on 0.9 mm buffered fiber. The BTW version uses finger catch and extended latch to make the LC easy to engage and disengage.

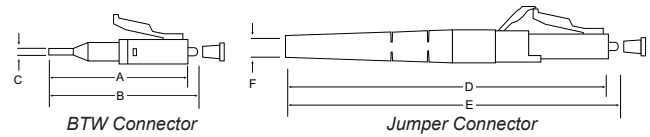
The LC Connector is easily field mountable and all of the tools necessary are contained in the 1032B kit combined with the D182959 upgrade kit. The upgrade kit contains a microscope adapter, polishing tool and connector holders. Consumable kits containing enough material to mount approximately 200 connectors (not included) are available for both the multimode and single-mode connectors. Order a D182983 consumable epoxy kit for multimode connectors, or the D182977 consumable epoxy kit when using single-mode connectors.

| LC Field Mountable Connector Specifications (max, std. dev.) | |
|---|---|
| Specification | Value |
| Ferrule Diameter | 125.5 μm |
| Cable OD | .9 mm BTW |
| Insertion Loss m,s ¹ | 0.25 dB, 0.05 dB |
| Return Loss | 55 dB |
| Mating Durability (Insertion Loss Change after 500 Reconnects) | < 0.2 dB |
| Temperature Stability | -40 °F to +167 °F (-40 °C to +75 °C) |
| Insertion Loss Change | < 0.3 dB |
| Tip Material | Zirconia |

¹ Complete connection concatenated statistics, 8.3/125 fiber, 62.5/125 fiber, dry connection.



Single-Mode and Multimode
LC BTW Connectors



| Ref. | Dimensions mm | |
|------|---------------|---------|
| | Minimum | Maximum |
| A | — | 30 |
| B | — | 32 |
| C | 0.7 | 1.4 |
| D | — | 49 |
| E | — | 51 |
| F | 1.8 | 3.4 |

| Ordering Information | | |
|--------------------------------|--------------------|-------------|
| Description | Product Code | Comcode |
| LC Connectors | | |
| SM Simplex Jumper - Individual | P1100A-Z-126.0 | 109 154 559 |
| SM Simplex Jumper - 100 Pack | P1100A-Z-125.0-100 | 109 167 502 |
| SM Simplex Jumper - 100 Pack | P1100A-Z-125.5-100 | 109 167 510 |
| SM Simplex Jumper - 1000 Pack | P1100A-126.0-1000 | 109 047 753 |
| SM Simplex Jumper - 100 Pack | P1100A-Z-126.0-100 | 109 167 528 |
| SM Duplex Jumper | P1102A-Z-126.0 | 108 137 605 |
| SM Duplex Jumper - 100 Pack | P1102A-Z-126.0-100 | 108 241 969 |
| SM BTW | P1101A-Z-126.0 | 107 764 300 |
| SM BTW | P1101A-Z-126.0-100 | 107 764 420 |
| SM BTW - 100 Pack | P1101A-Z-125.0-100 | 109 095 364 |
| SM BTW - 100 Pack | P1101A-Z-125.5-100 | 109 095 356 |
| MM Simplex | P1000A-Z-127.0 | 108 064 445 |
| MM Duplex | P1002A-Z-127.0 | 108 138 678 |
| MM Duplex | P1002A-Z-127.0-100 | 108 241 977 |
| MM BTW | P1001A-Z-127.0 | 107 764 292 |
| MM BTW | P1001A-Z-127.0-100 | 108 247 412 |
| MM BTW | P1001A-Z-127.0-100 | 108 247 412 |

LC Adapter

The LC adapters from OFS feature a self-adjusting mechanism designed to accommodate panels of thickness between 1.55 to 1.75 mm (0.50 to 0.067 inches). The LC duplex adapter occupies approximately the same space as an SC simplex adapter, doubling the density capacity of the equipment. Our LC Adapter is designed to work together with the complete LC product family to offer an optimal, high-density solution for your network.

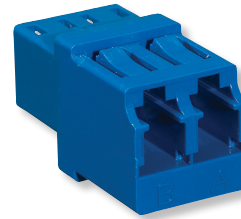
The adapter has a square profile and can be rotated to any of four positions in the panel. It is available in single-mode, multimode, simplex and duplex options. LC adapters can mount in panels designed to fit the 5-inch, 7-inch, and 9-inch LGX shelves. Three versions are available.

One option is a low profile LC single-mode duplex adapter that fits the opening of an SC simplex adapter. It fits panels of thickness between 1.55 to 1.75 mm (0.50 to 0.067 inches).

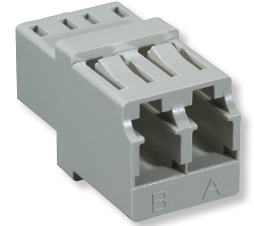
The duplex angled mount LC adapter latches into a rectangular panel opening 17.83 mm high (max 17.98 mm) by 17.23 mm wide (max 13.39 mm) wide.

Our LC Adapter products include:

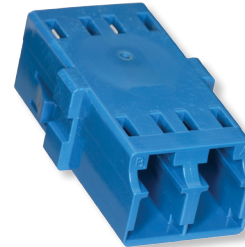
- Single-mode, simplex and duplex
- Multimode, simplex and duplex
- LC adapter in SC footprint



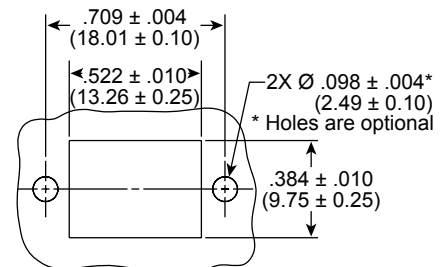
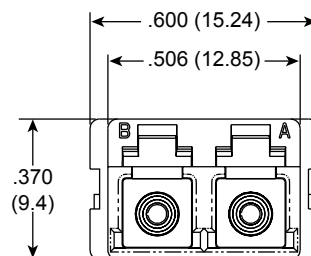
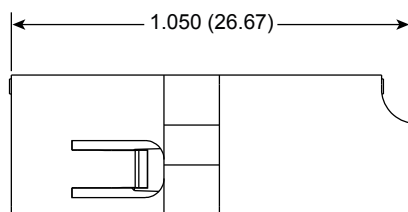
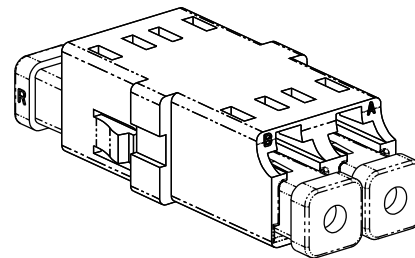
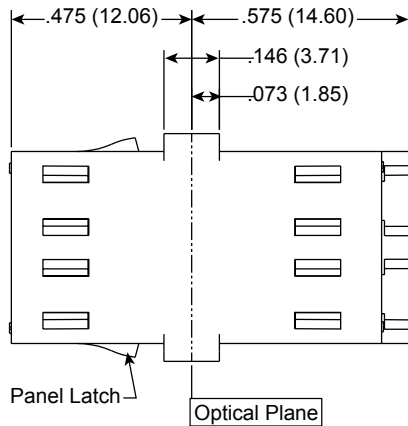
Single-Mode LC Duplex Adapter



Multimode LC Duplex Adapter



Low Profile Duplex LC Adapter



LC Connector Family

| LC Adapter Ordering Information | | |
|--|-----------------|-------------|
| Description | Product Code | Comcode |
| MM LC simplex adapter | C1001B-1 | 107 764 243 |
| MM LC duplex adapter | C1001B-2 | 108 072 497 |
| MM LC duplex adapter (1000 pack) | C1001B-2-1000 | 109 161 323 |
| LaserWave® MM LC duplex adapter | C1001B-2-LS | 108 911 710 |
| SM LC simplex adapter | C1101A-1 | 107 764 268 |
| SM LC duplex adapter | C1101A-2 | 108 072 489 |
| SM LC duplex adapter , 100 pack | C1101A-2-100 | 300 541 232 |
| SM LCAPC simplex adapter | C1201B-1 | 108 388 901 |
| SM LCAPC simplex adapter (1000 pack) | C1201B-1-1000 | 300 471 265 |
| SM LCAPC duplex adapter | C1201B-2 | 108 388 919 |
| SM LCAPC duplex adapter (100 pack) | C1201B-2-100 | 300 528 684 |
| SM LCAPC duplex adapter (1000 pack) | C1201B-2-1000 | 300 471 273 |
| MM LC in SC footprint duplex adapter | C1004B-2 | 108 950 312 |
| MM LC in SC footprint duplex adapter (100 pack) | C1004B-2-100 | 108 950 411 |
| LaserWave MM LC in SC footprint duplex adapter | C1004B-2-LS | 300 478 138 |
| SM LC in SC footprint duplex adapter | C1104A-2 | 300 515 210 |
| SM LC in SC footprint duplex adapter (100 pack) | C1104A-2-100 | 300 444 197 |
| SM LC in SC footprint duplex adapter (1000 pack) | C1104A-2-1000 | 300 444 205 |
| SM LCAPC in SC footprint duplex adapter | C1204A-2 | 108 950 379 |
| SM LCAPC in SC footprint duplex adapter (100 pack) | C1204A-2-100 | 108 950 460 |
| SM LC Duplex (in SC footprint) Shielded Adapter | C1104A-2-S | 109 188 649 |
| SM LC Duplex (in SC footprint) Shielded Adapter (100 pack) | C1104A-2-S-100 | 109 188 664 |
| SM LC Duplex (in SC footprint) Shielded, Shuttered Adapter | C1104A-2-SS | 109 188 631 |
| SM LC Duplex (in SC footprint) Shielded, Shuttered Adapter (100 pack) | C1104A-2-SS-100 | 109 188 656 |
| SM LCAPC Duplex (in SC footprint) Shielded, Shuttered Adapter | C1204A-2-SS | 300 388 402 |
| SM LCAPC Duplex (in SC footprint) Shielded, Shuttered Adapter (100 pack) | C1204A-2-SS-100 | 300 388 410 |
| SM LC Simplex Shielded Adapter | C1101A-1-S | 300 387 966 |
| SM LC Simplex Shielded Adapter (100 pack) | C1101A-1-S-100 | 300 387 974 |
| SM LC Duplex Shielded Adapter | C1101A-2-S | 300 387 982 |
| SM LC Duplex Shielded Adapter (100 pack) | C1101A-2-S-100 | 300 387 990 |

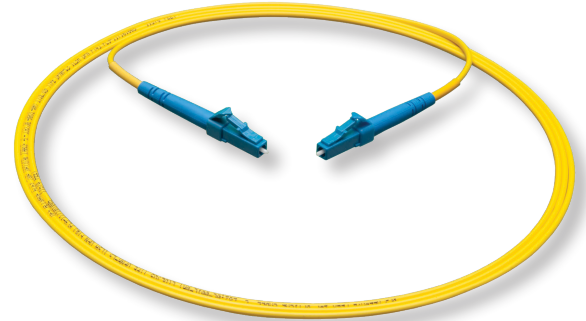
LC Adapter

OFS offers extensive line of LC fiber optic jumpers. Included in the offering are both simplex and duplex jumpers as well as hybrids and pigtails.

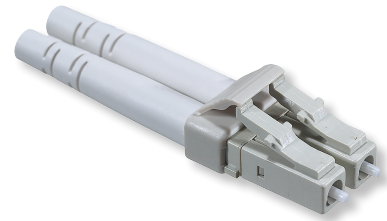
The LC Connector used on the LC Patchcords has a trigger mechanism that allows the connector to be easily engaged and disengaged. This trigger also prevents the plug from snagging when jumper cables are being routed. On multimode duplex jumpers, the trigger also allows the two plugs to be simultaneously disengaged.

The LC Jumpers are available in 1.6 mm diameter cordage. 1.6 mm cordage, the smallest in the industry, allows greater jumper density in a fully loaded frame and prevents congestion in overhead racks. A duplex jumper made from a figure-eight MiniCord® Cordage does not require a bulky bifurcation joint thereby saving space in the frame. The duplex MiniCord jumper can be peeled apart with ease so that two cords can be installed as one, then easily separated into two, saving time and effort. Single-mode cordage uses OFS depressed clad fiber providing excellent bend loss performance. The bend radius permits you to install jumpers in spaces with limited maneuverability or around sharp corners.

Jumpers are tested and must meet a maximum insertion loss of 0.25 dB. Jumpers come in fixed lengths or can be ordered in custom lengths.



LC AllWave® FLEX Simplex Jumper



Duplex LC Multimode Connector



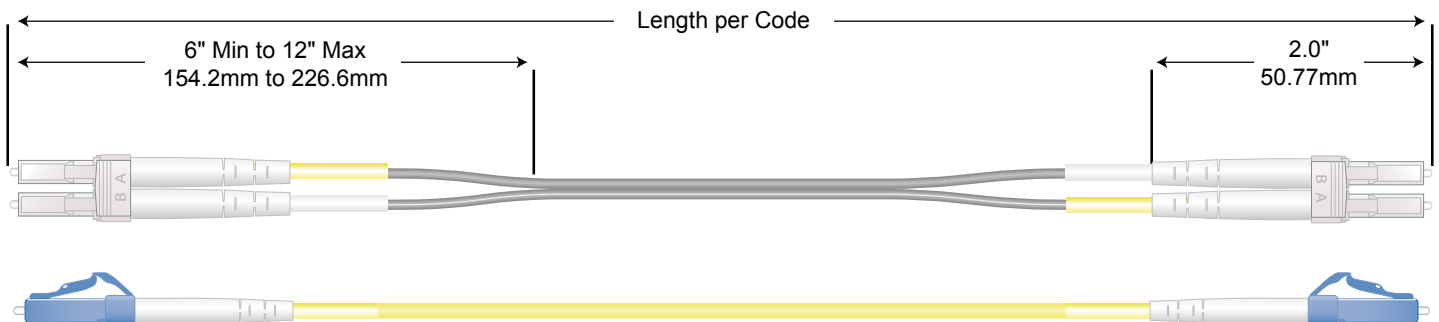
Simplex LC Single-Mode Connector



Simplex LC Angled-Polished Connectors

| Ordering Information - Connectors and Adapters | | |
|--|------------------|---------------|
| Description | Product Code | Comcode |
| Insertion Loss (max., std. dev.) | 0.25 dB, 0.05 dB | 0.10, 0.10 dB |
| Return Loss Minimum | 55 dB | 20 dB |
| Cable OD | 1.6 mm | 1.6 mm |
| Cable Retention ² (cordage) | 20 lbs./88.9N | 20 lbs./88.9N |
| Mating Durability for 500 Reconnects | < 0.2 dB | <0.2 dB |
| Insertion Loss Change | < 0.3 dB | < 0.3 dB |
| Temperature Stability (-40 °C to +75 °C) | < 0.3 dB | < 0.3 dB |
| Tip Material | Ceramic | Ceramic |

¹ Complete connection concatenated statistics 8.3/125 fiber, 62.5/125 fiber, dry connection.





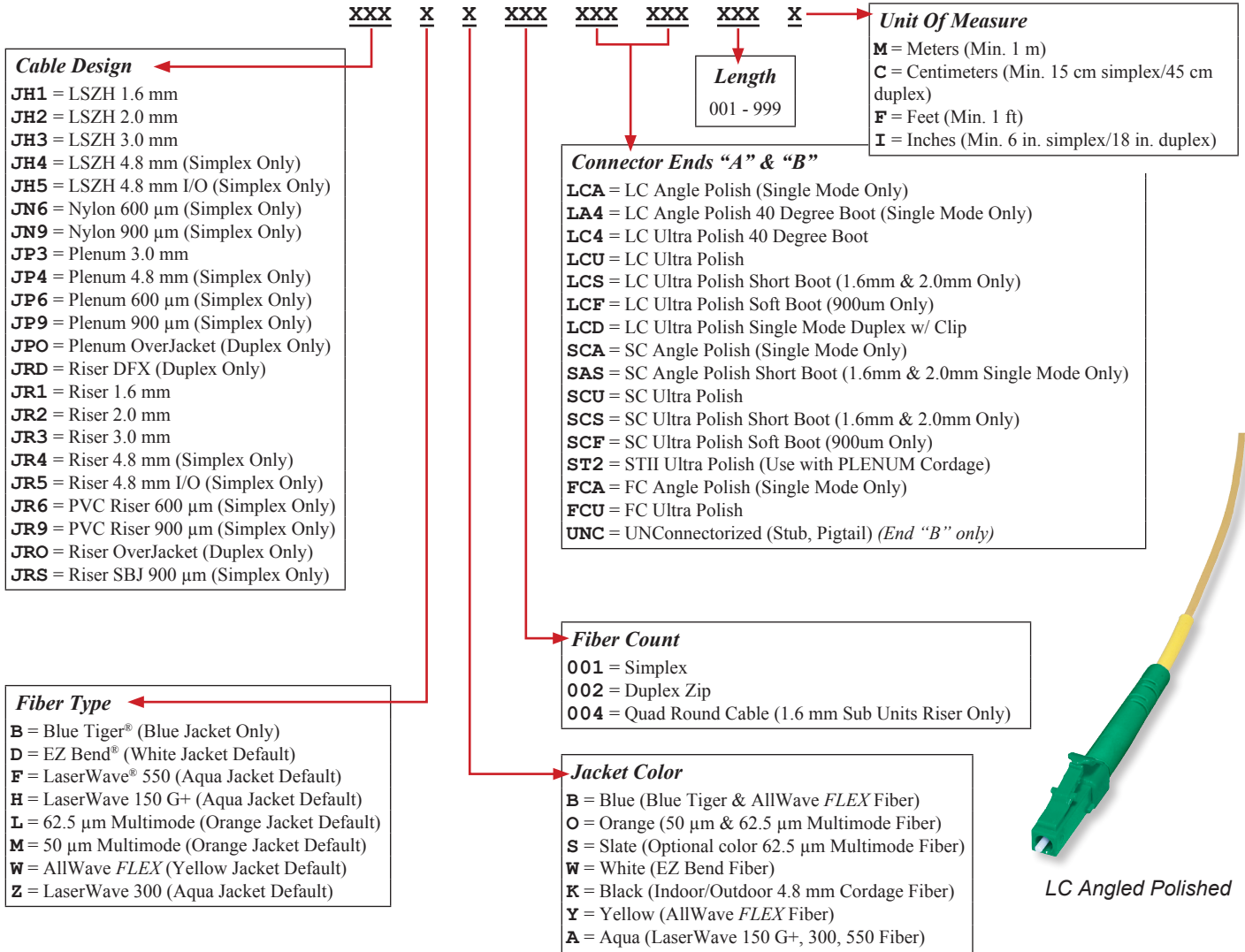
A Furukawa Company

LC Connector Family

LC Jumper Assemblies SMART Coding

- Examples:** **JP3WY001LCUSCU003M** – Jumper Plenum 3.0 mm AllWave® FLEX Fiber Yellow 1 fiber (Simplex) LCU SCU 003 Meters long
JR2WY002LCUSCU003M – Jumper Riser 2.0 mm AllWave FLEX Fiber Yellow 2 fibers (Zip) LCU SCU 003 Meters long
JR9WY001LCUUNC003M – Jumper Riser 900 µm AllWave FLEX Fiber Yellow 1 fiber LCU UNC (Pigtail) 003 Meters long

SMART Code syntax below has spaces between field sets for visibility. Actual SMART Code should not include any spacing.



For additional information please contact your sales representative.

You can also visit our website at www.ofsoptics.com or call 1-888-fiberhelp (1-888-342-3743) USA or 1-770-798-5555 outside the USA.



Copyright © 2017 OFS Fitel, LLC.
All rights reserved, printed in USA.

OFS Marketing Communications
DOC: fap-116 Date: 09/17



AllWave, LaserWave, and MiniCord are registered trademarks of OFS Fitel, LLC.
OFS reserves the right to make changes to the prices and product(s) described in this document at any time without notice. This document is for informational purposes only and is not intended to modify or supplement any OFS warranties or specifications relating to any of its products or services.