

WALL MOUNT ENCLOSURE 100 Series - Compact



Width 25.5"- Depth 20"

Features:

- ▶ One-piece construction wall mount enclosure.
- ▶ Offers the installers an economical solution to 19" wall-mount applications.
- ▶ Comes complete with equipment mounting hardware and one pre-installed ventilation 80 cfm fan.
- ▶ Meets or Exceeds EIA-310D Standards.
- ▶ Electrostatic microfinish paint.
- ▶ Ships fully assembled.



Colors:



Black



Ivory

Custom colors and configurations available. Minimum quantities apply.

Specifications					AWG			
Stock No.	Height	Format	RU	Color	Structure	Top Panel	Front Door	Bottom Panel
WM1019-05-01	11"	19"	5 RU	Ivory	20	20	20	20
WM1019-05-02	11"	19"	5 RU	Black	20	20	20	20
WM1019-07-01	15"	19"	7 RU	Ivory	20	20	20	20
WM1019-07-02	15"	19"	7 RU	Black	20	20	20	20
WM1019-09-01	18"	19"	9 RU	Ivory	20	20	20	20
WM1019-09-02	18"	19"	9 RU	Black	20	20	20	20
WM1019-11-01	22"	19"	11 RU	Ivory	20	20	20	20
WM1019-11-02	22"	19"	11 RU	Black	20	20	20	20

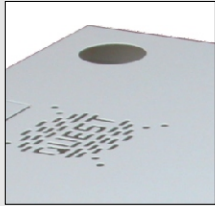
RU = Rack Units



WALL MOUNT ENCLOSURE 100 Series - Compact

Width 25.5"- Depth 20"

Cable Access



Top and bottom panels feature cutouts for cable access.

Vented Panels



Features vented front, rear and top panels for excellent air circulation characteristics.

Adjustable Rails



Designed with internal adjustable cage nut rails for #12-24 mounting screws in accordance with EIA standards.



Front Door



Front door is reversible for left or right side opening. Key lock pre-mounted on door.

WALL MOUNT ENCLOSURE 100 Series - Compact



Width 20.5" - Depth 20"

External Dimensions

Product					Package			
RU	A -Height	B - Width	C - Depth	Load Capacity	Height	Width	Depth	Shipping Weight
5 RU	11"	20.5"	20"	30 lbs	13"	23"	22"	24 lbs
7 RU	15"	20.5"	20"	50 lbs	17"	23"	22"	28 lbs
9 RU	18"	20.5"	20"	70 lbs	20"	23"	22"	35 lbs
11 RU	22"	20.5"	20"	90 lbs	24"	23"	22"	40 lbs

Internal Dimensions

Product				
RU	A - Height	B - Width	C - Depth	Load Capacity
5 RU	8.75"	19"	15"	30 lbs
7 RU	12.25"	19"	15"	50 lbs
9 RU	15.75"	19"	15"	70 lbs
11 RU	19.25"	19"	15"	90 lbs

