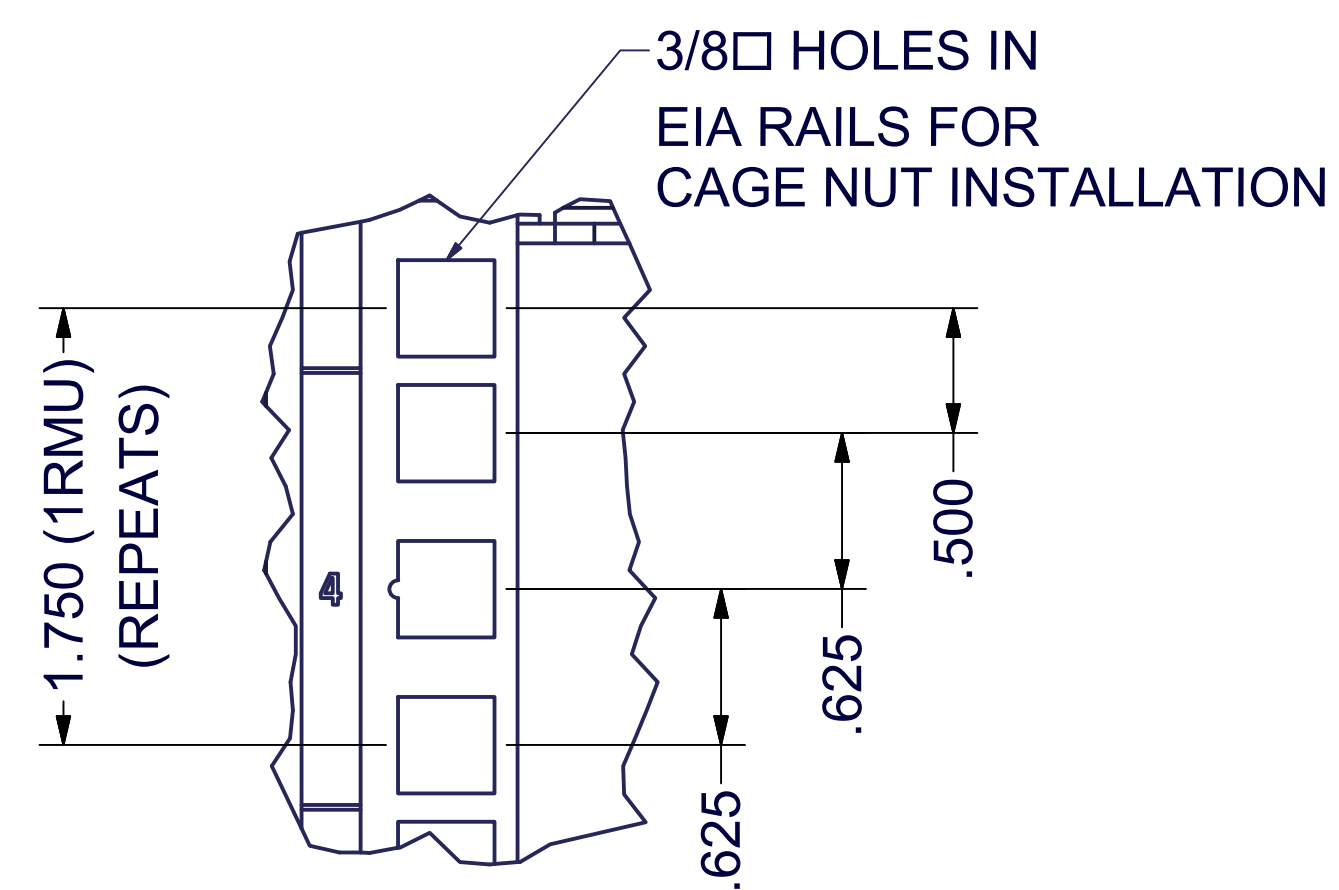
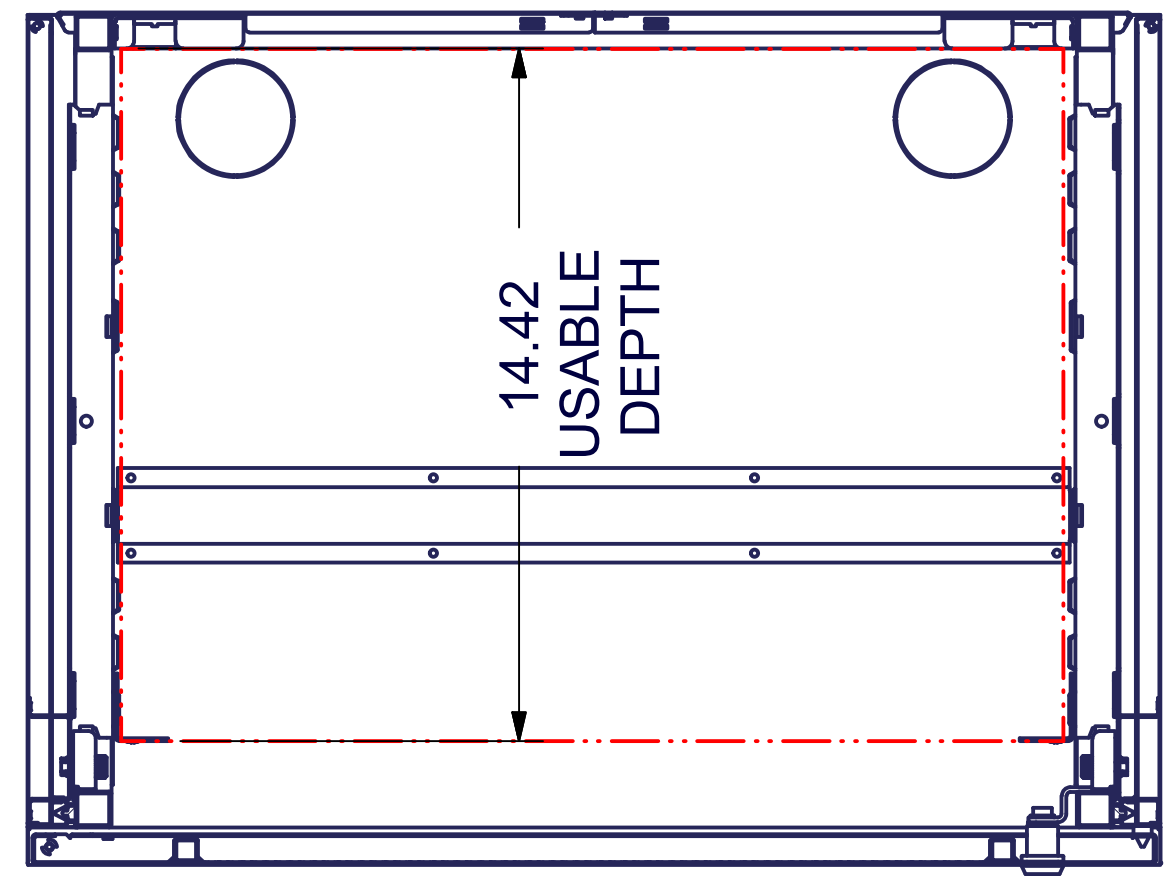


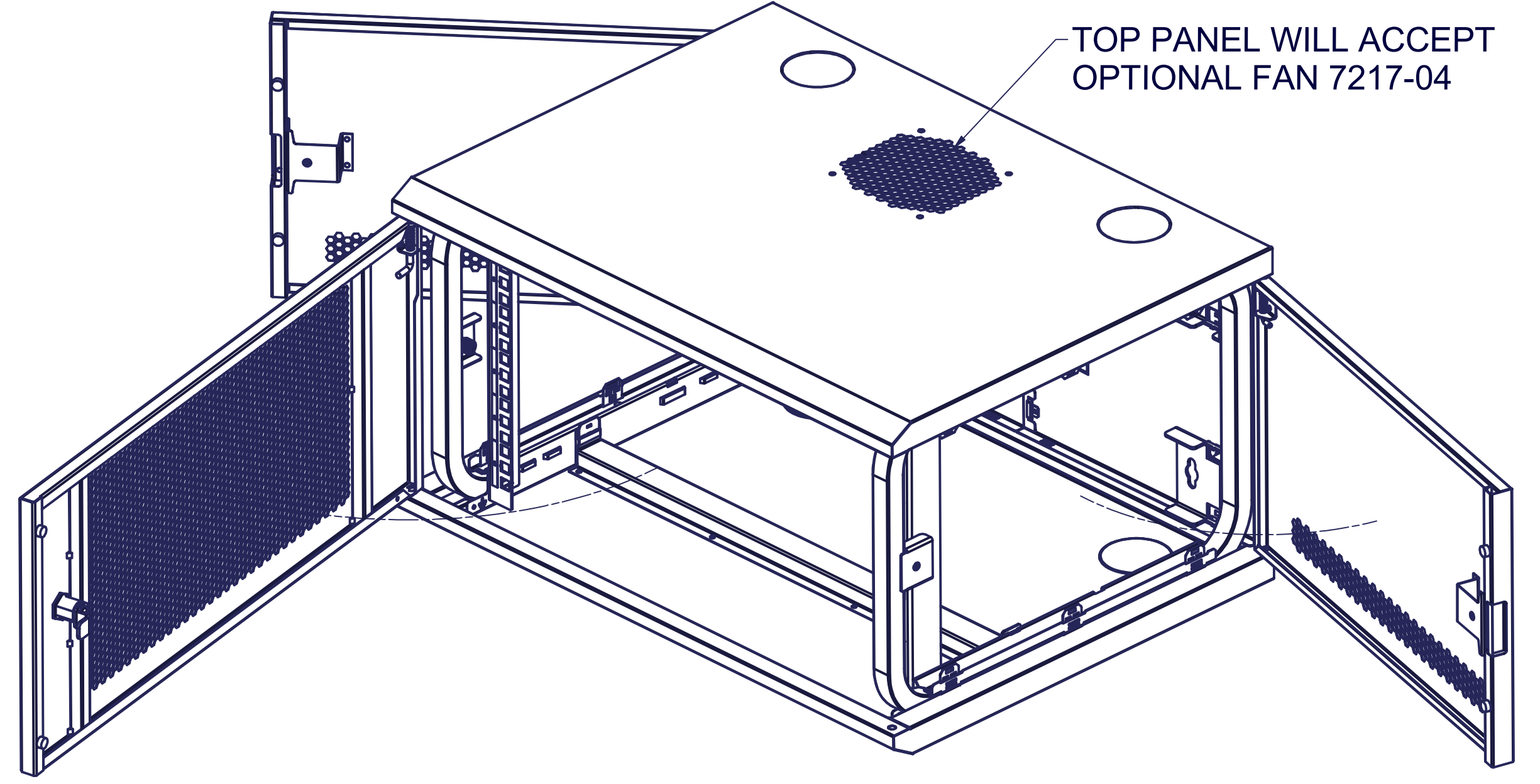
REVISION HISTORY			
REV	DESCRIPTION	DATE	APPROVED
0	ECO-08298	4/4/22	HAM



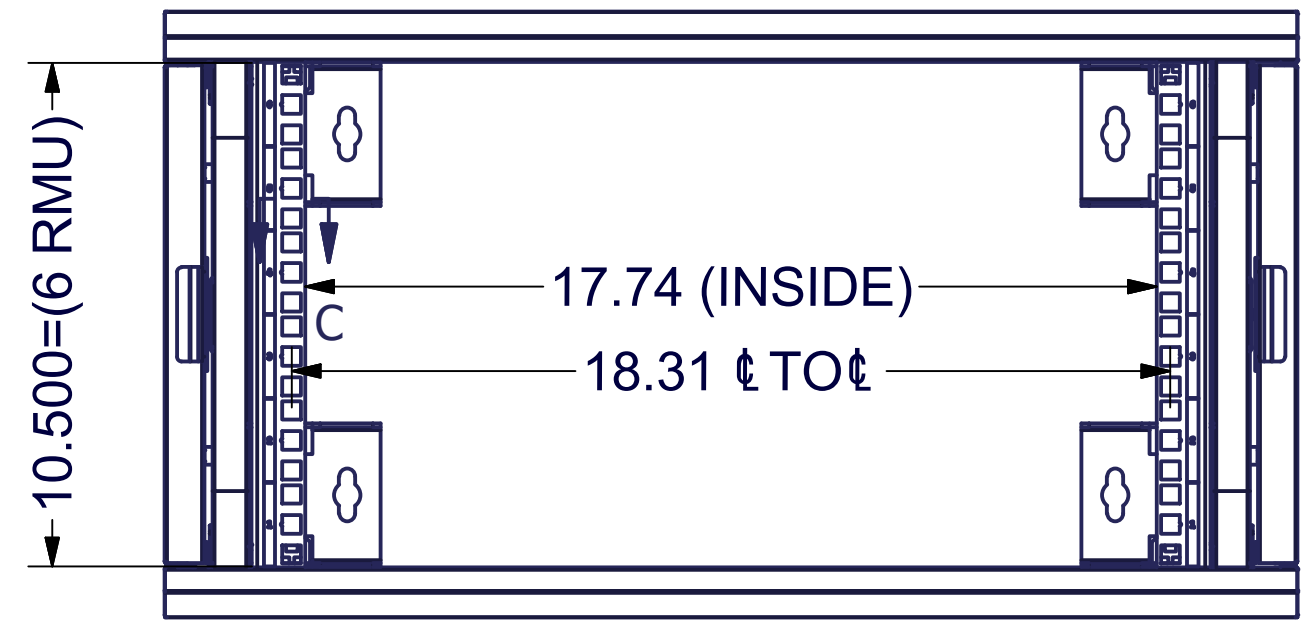
DETAIL C



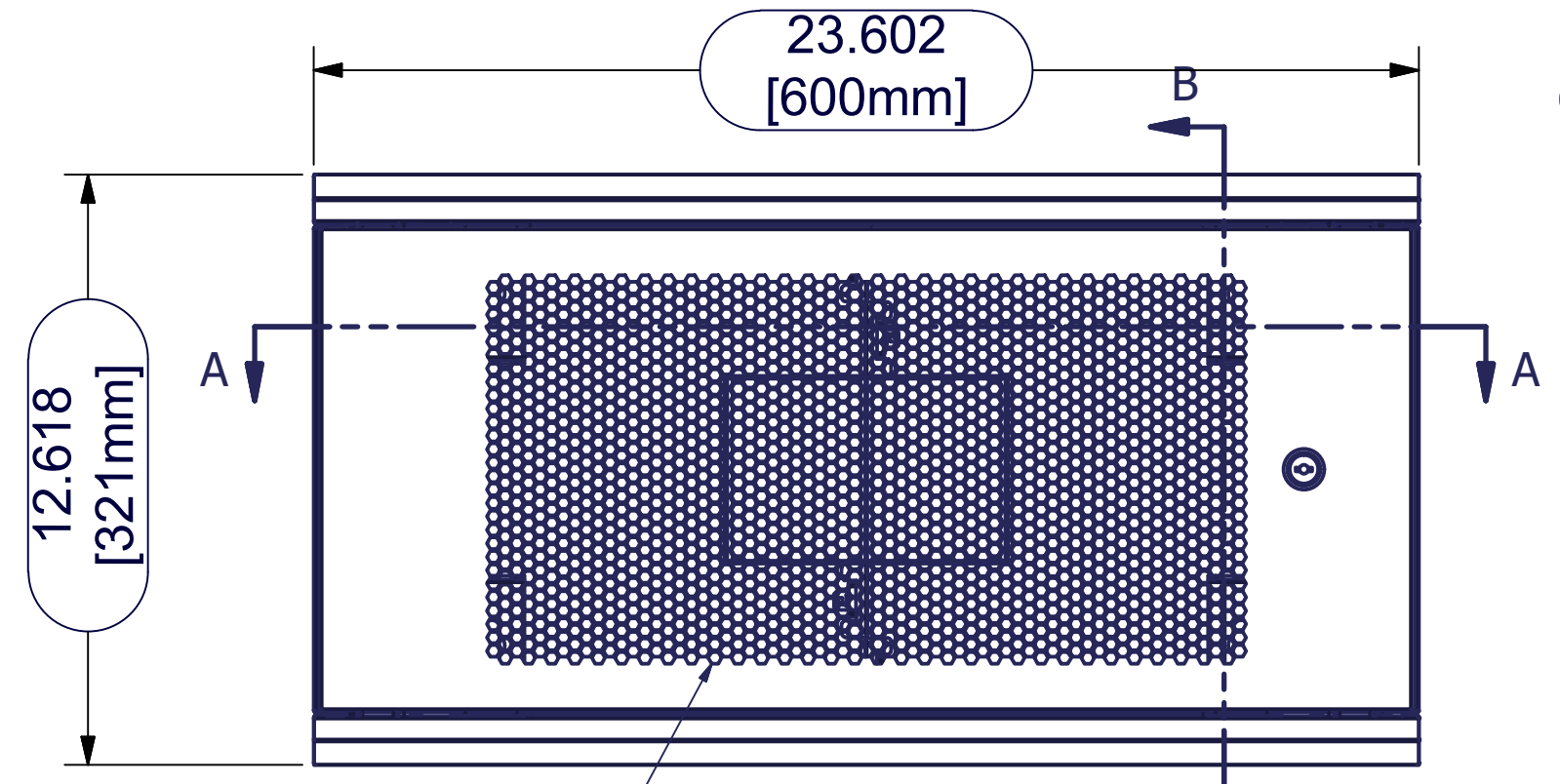
SECTION A-A



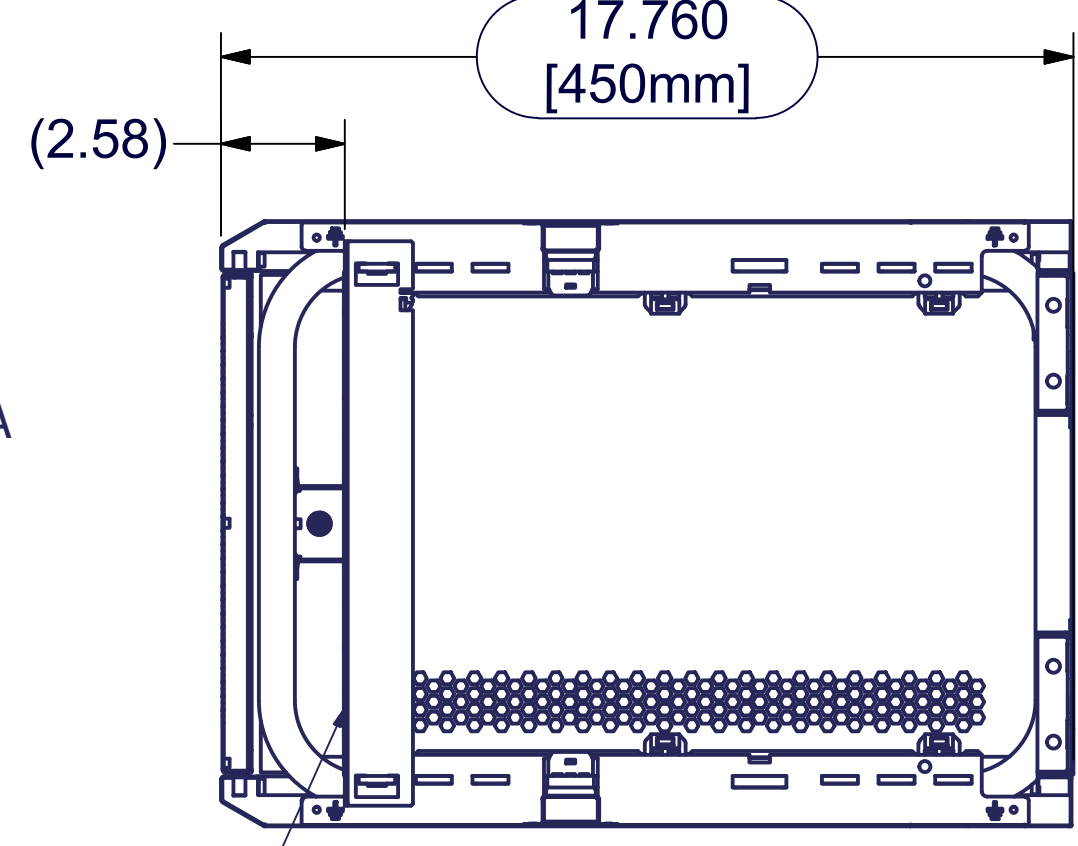
ISO VIEW OPENED



FRONT VIEW
(FRONT DOOR &
REAR PANEL NOT SHOWN)

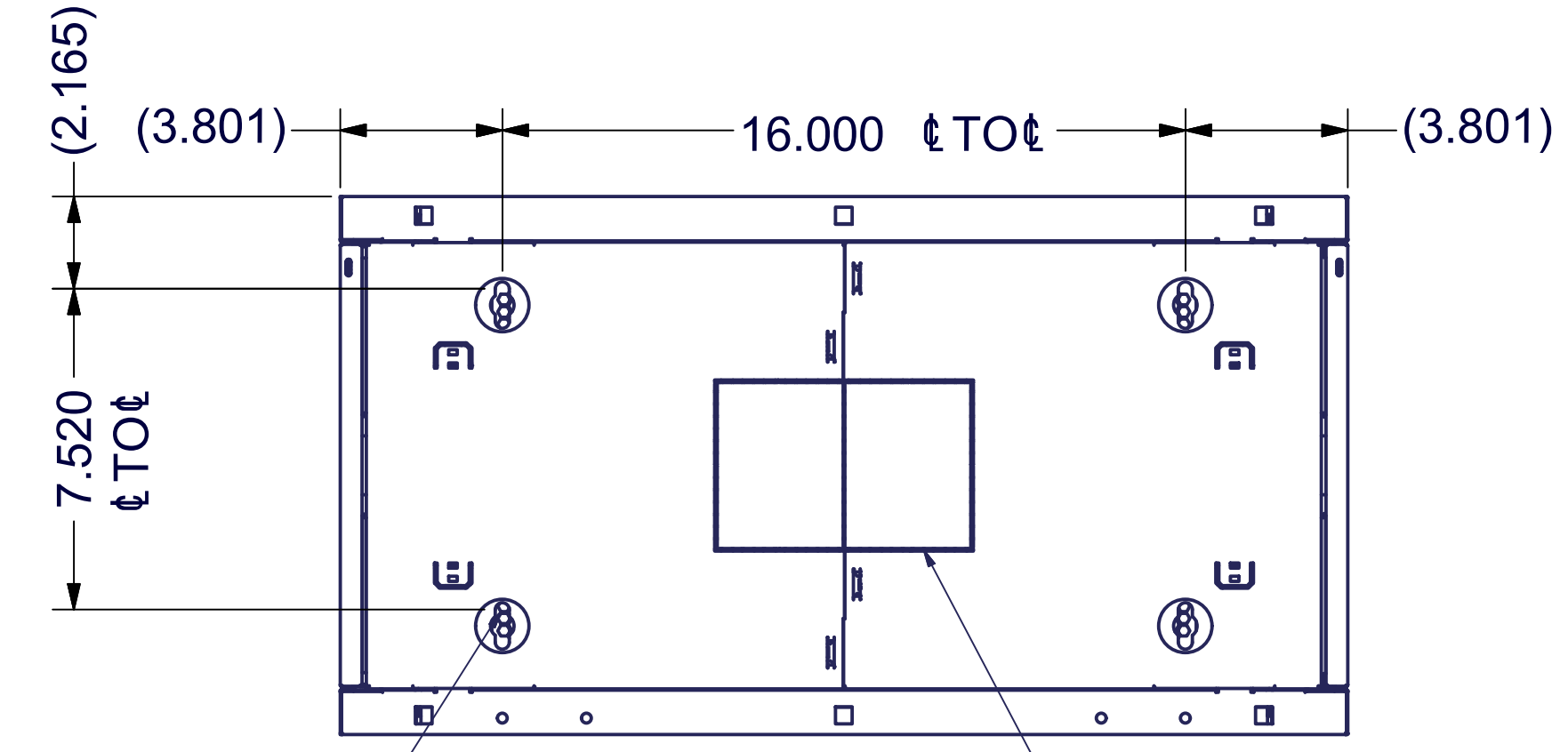


PERFORATED MESH DOOR
FRONT VIEW
SINGLE SET OF RAILS
DEPTH ADJUSTABLE
3 POSTIONS: 2.58",3.76",5.57"



SECTION B-B

MOUNTING HOLES
FOR M8 HARDWARE
OR 5/16 HARDWARE



BACK VIEW
4.01" X 6.06"
KNOCKOUT

SPECIFICATIONS: WMFP WALL MOUNT

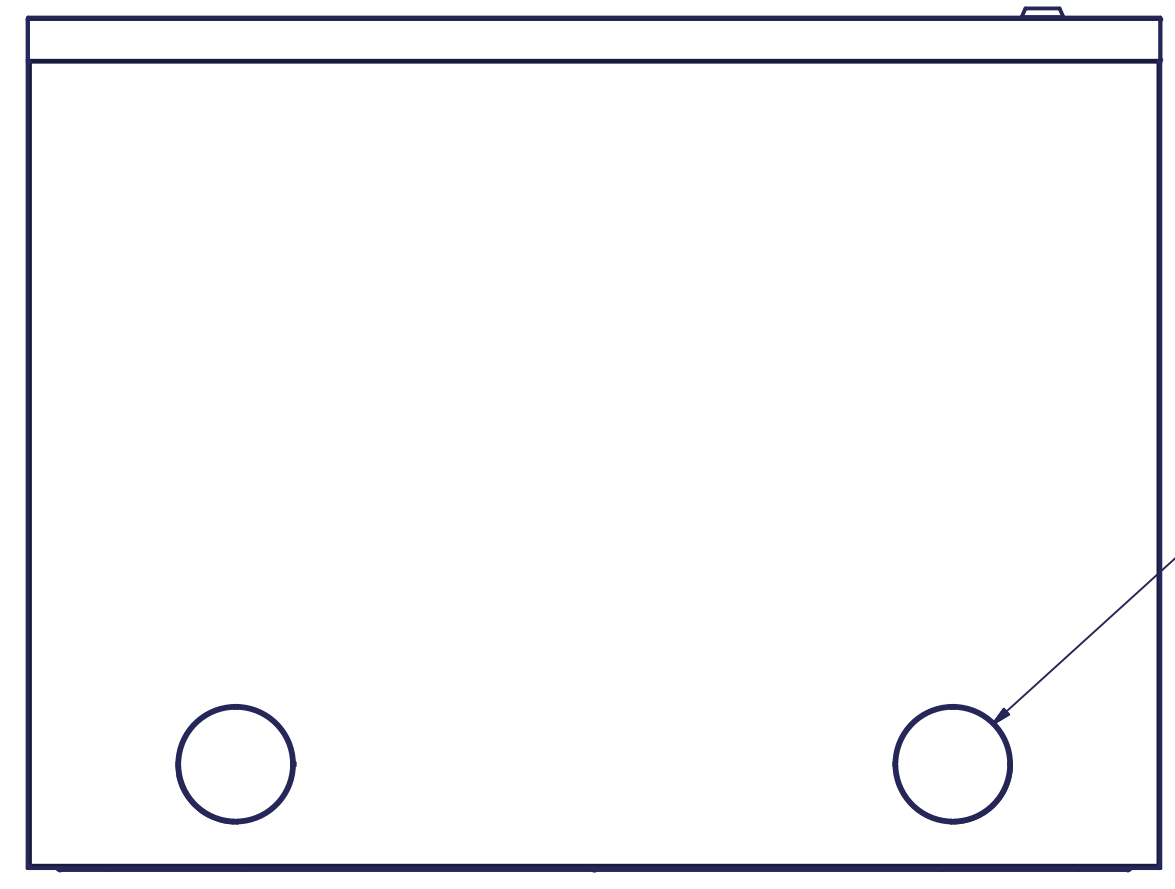
RACK SPACES: 19" EIA 310-E COMPLIANT

COLOR: DURABLE BLACK TEXTURED POWDER COAT FINISH.

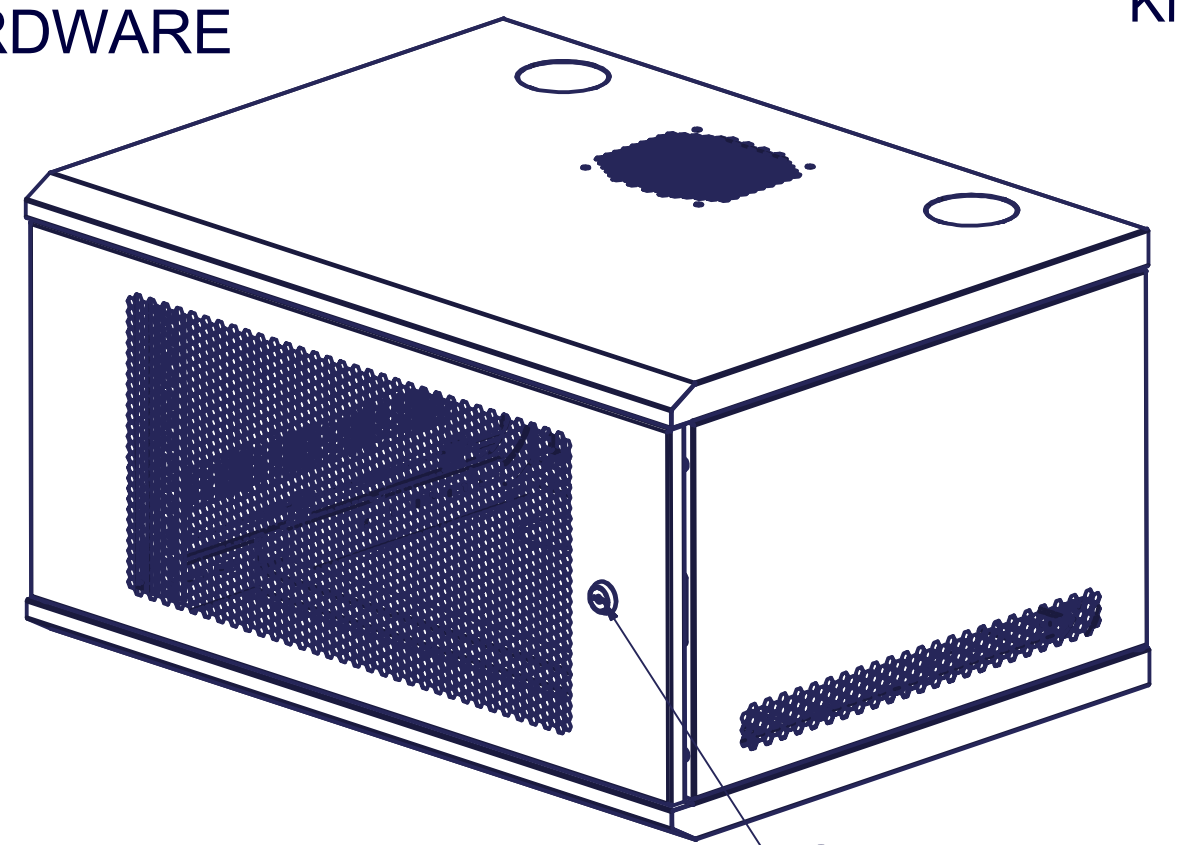
- FEATURES:**
- FLAT-PACKED FOR ONSITE STORAGE (WMFP SHIPS UNASSEMBLED)
 - 1 PAIR OF CAGE NUT MOUNTING RAILS, #16 GA.
 - (2) 2" NOMINAL CONDUIT KNOCKOUTS ON TOP AND BOTTOM.
 - 4"X6" CABLE ACCESS ON THE REAR.
 - PERFORATED AREA ON TOP FOR OPTIONAL FAN 7217-04.
 - REMOVABLE MESH STEEL DOOR WITH KEY CODED #1333 LOCK.
 - HINGED SIDE PANELS
 - SIDE PANELS CAN BE OPENED/REMOVED FROM THE INSIDE THROUGH FRONT DOOR.

USABLE DEPTH: 14.42"

LOAD CAPACITY: 132 lbs(60kg)



BOTTOM VIEW



ISO VIEW CLOSED

QUARTER TURN LOCK,
KEYED #1333

EST. SHIP WEIGHT :
25.3Lb/11.5Kg

INTERPRET DRAWING PER ASME Y14.5M-1994
DIMENSIONAL LIMITS APPLY AFTER APPLICATION OF FINISH
DRAWING NOT TO SCALE
TOLERANCE UNLESS OTHERWISE NOTED:
ANGULAR +/- 1'
.XXXX +/- .010
.XXX +/- .015
.XX +/- .030
.X FOR REF. ONLY
THIRD ANGLE PROJECTION
UNLESS OTHERWISE SPECIFIED ALL DIMENSIONS ARE IN INCHES

NOTICE:
Use of this document is subject to a confidentiality and nondisclosure agreement with Great Lakes Case & Cabinet Co., Inc. (GLCC) and may not be reproduced, disclosed or utilized in whole or in part without prior written authorization from GLCC.

PART NUMBER: GL06WMFP-B
MATERIAL TYPE: CRS
MATERIAL GAUGE:
FINISH: SEE DETAILS
DRAWN: HenryM
CHECKED & APP. CND
DATE: 3/28/2022
DATE: 4/8/2022

TITLE: 6 RMU, WALLMOUNT FLAT PACK, VENTED DOOR
GREAT LAKES CASE & CABINET CO., INC. P.O. BOX 551 EDINBORO, PA 16412 PHONE (814) 734-7303 FAX (814) 734-3907 E-MAIL glcc@greatcabinets.com
DWG NO: 1034531
REV: 0
SHEET: 1 OF 1