

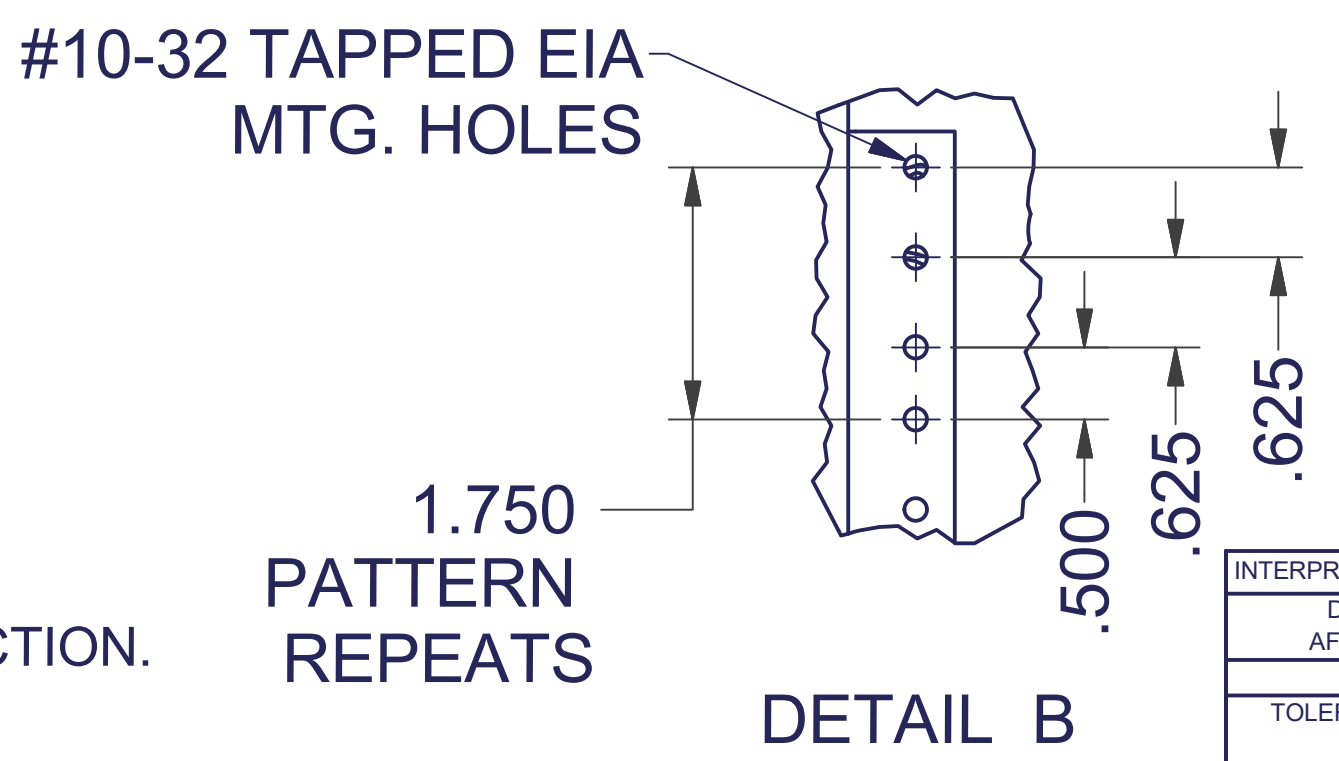
PLEXIGLAS DOOR

SPECIFICATIONS: 15WM WALL MOUNT

RACK SPACES: 19" EIA 310-E COMPLIANT - 7 RMU

COLOR: DURABLE BLACK TEXTURED POWDER COAT.

FEATURES: 1 PAIR OF FULLY ADJUSTABLE #10-32 THREADED MOUNTING RAILS, #12 GA. 1/2", 3/4", 5/8", 1", 2", AND 3" CODUIT KNOCKOUTS ON TOP AND BOTTOM OF REAR SECTION. PLEXIGLASS DOORS. SPARE 1 RMU TAB ON BACK PANEL ALLOWS POWER STRIP MOUNTING



INTERPRET DRAWING PER ASME Y14.5M-1994
DIMENSIONAL LIMITS APPLY AFTER APPLICATION OF FINISH
DRAWING NOT TO SCALE
TOLERANCE UNLESS OTHERWISE NOTED:
ANGULAR +/- 1°
.XXXX +/- .010
.XXX +/- .015
.XX +/- .030
.X FOR REF. ONLY
UNLESS OTHERWISE SPECIFIED ALL DIMENSIONS ARE IN INCHES

NOTICE: Use of this document is subject to a confidentiality and nondisclosure agreement with Great Lakes Case & Cabinet Co., Inc. (GLCC) and may not be reproduced, disclosed or utilized in whole or in part without prior written authorization from GLCC.

PART NUMBER: GL15WMP-B-00
QTY PER UNIT: 1
MATERIAL TYPE:
MATERIAL GAUGE:
FINISH:
DRAWN ShawnB
DATE 9/10/2007
CHECKED & APP. DATE

TITLE WALL MOUNT, NO SWING, 7RMU, PLEXI DOOR
GREAT LAKES CASE & CABINET CO., INC. P.O. BOX 551 EDINBORO, PA 16412 PHONE (814) 734-7303 FAX (814) 734-3907 E-MAIL glcc@greatcabinets.com
DWG NO:
REV 2
SHEET OF 1