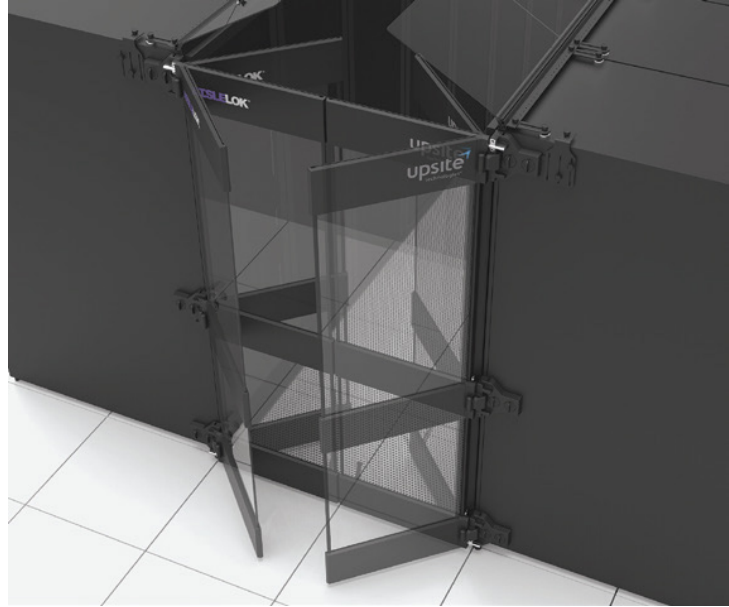
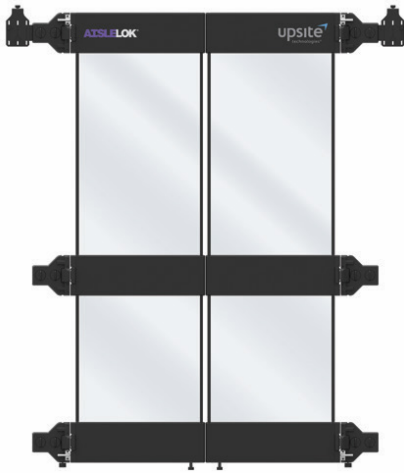


MAGNETIC SWINGING DOORS



The AisleLok® Bi-Directional Doors are a key component in Upsite Technologies' AisleLok® Modular Containment solution. The doors can be used with or without the AisleLok® Rack Top Baffles; however, for maximum benefit both products are recommended.

Part No.	Description
GLAL10163-42	48" x 42U Bi-Directional Doors; 34.25" x 4" x 78"; 1 set; 72 lbs.
GLAL10163-45	48" x 45U Bi-Directional Doors; 34.25" x 4" x 83.25"; 1 set; 74 lbs.
GLAL10163-48	48" x 48U Bi-Directional Doors; 34.25" x 4" x 88.5"; 1 set; 76 lbs.
GLAL10163-50	48" x 50U Bi-Directional Doors; 34.25" x 4" x 93.75"; 1 set; 78 lbs.

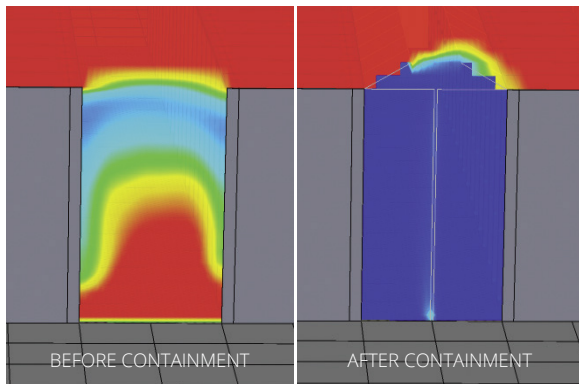
Modular Containment - Standard parts ready to ship when you need a fast solution!

FEATURES

- Standardized off-the-shelf design, available in common rack heights
- No tools required for installation; attaches directly to the side of the end-aisle cabinet using twist-locking magnets
- See-through doors provide maximum visibility in and out of the aisle
- Consists of matching LH and RH door panels with bi-directional swinging hinges
- Hands-free operation allows equipment carts to be pushed directly through the doors without the need to first slide or swing open the doors by hand
- Includes attached door stops to hold doors open as needed
- UL94 flame rated materials (see reverse for details)



AisleLok® is a registered trademark of Upsite Technologies.



CFD analysis shows a significant reduction in hot air recirculation when Bi-Directional Doors are applied in conjunction with Rack Top Baffles at the end of the cold aisle.

BENEFITS

- Supports reduced energy costs by providing the opportunity to increase set point temperatures and/or turn off cooling units or reduce fan speeds.
- Supports increased reliability and availability of IT equipment by reducing server intake temperatures.
- Allows for higher rack densities.
- Prevents hot air recirculation.
- Lower initial cost than traditional containment.
- Modular design and out-of-the-box installation does not

SPECIFICATIONS

- Designed for 48" wide aisles, but can also provide benefits for wider aisles.
- The AisleLok® Bi-Directional Doors are suitable for most enclosed cabinets with steel side panels.
- The AisleLok® Bi-Directional Doors require a minimum 6" clearance from the front edge of the cabinet along its entire height for the hinges to attach.

MATERIAL

Clear polycarbonate panel mounted to PC/ABS molded plastic panels and supports

FIRE RATING

AisleLok® Modular Containment components are designed with UL94 flammability rated materials. The open-sealing architecture of AisleLok® was designed to be compliant with data center fire codes. Approval for using the AisleLok® Modular Containment solution may vary greatly at the state and local level. As with the installation of any containment method, the final approval for compliance resides with the local authority having jurisdiction (AHJ).

MODULAR CONTAINMENT

AisleLok® Modular Containment is the industry's first modular containment solution designed to offer the airflow management benefits of hot and/or cold aisle isolation, but with greater flexibility and price value than traditional containment solutions. The AisleLok® Modular Containment solution is comprised of Rack Top Baffles, Bi-Directional Doors, and the Adjustable Rack Gap Panel. require 3rd party design, engineering, or construction which minimizes computer room disruption.