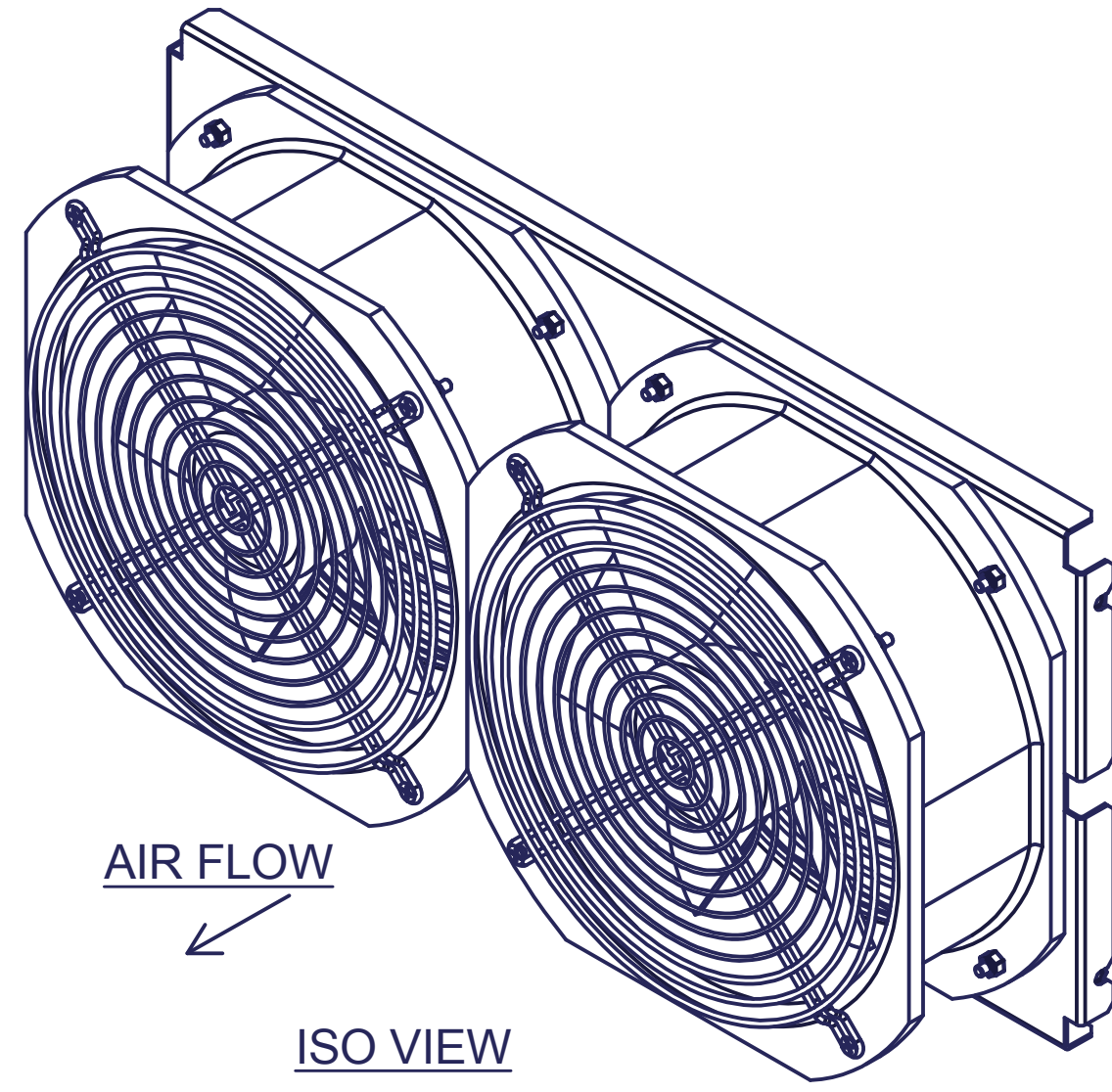


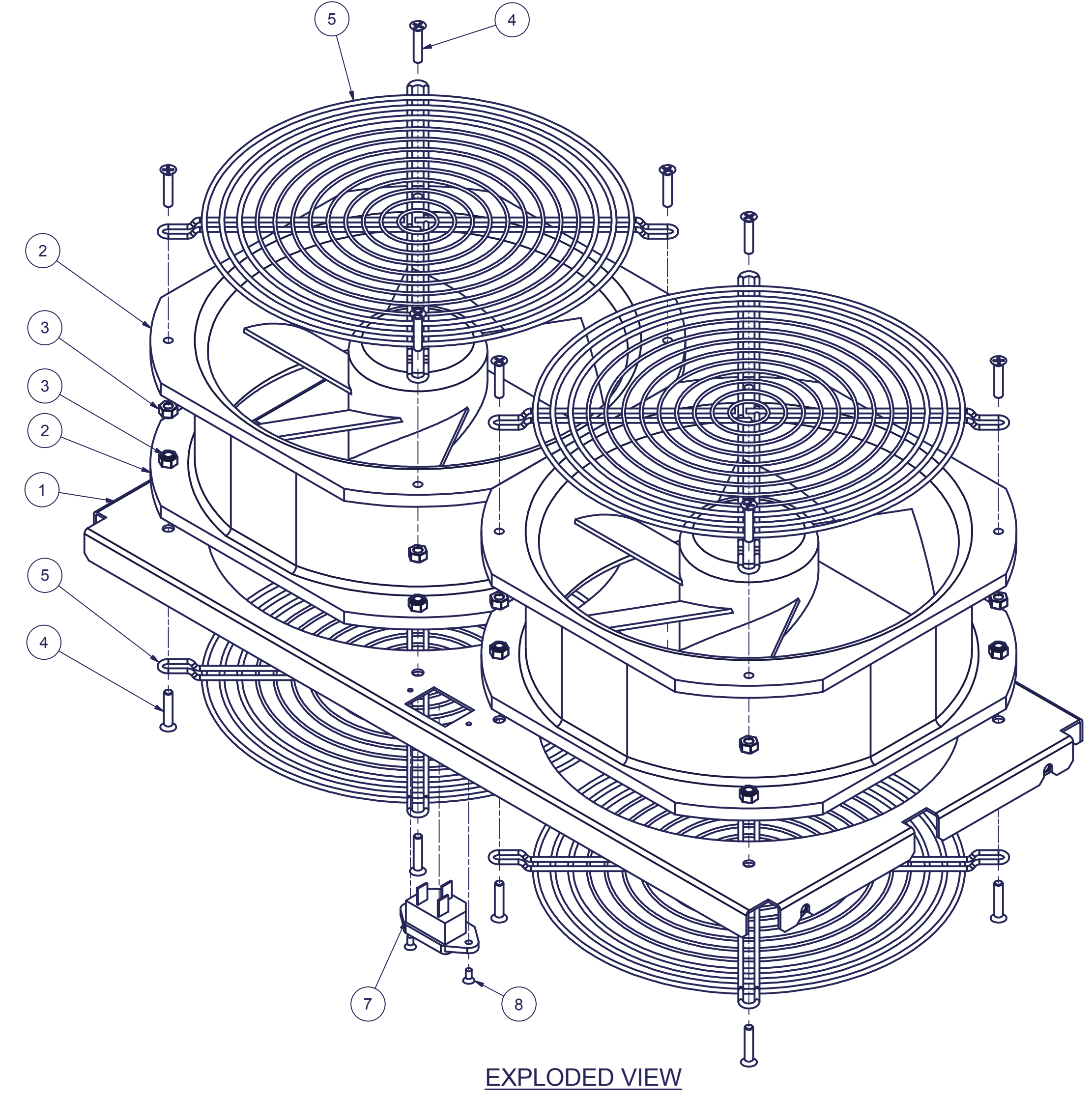
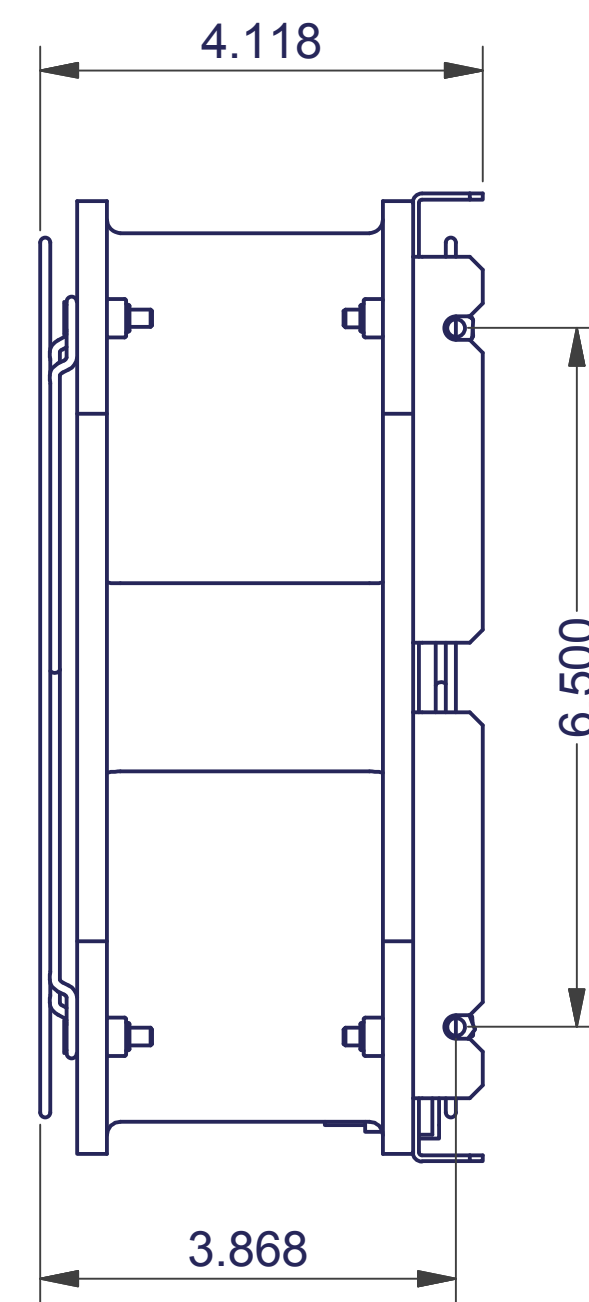
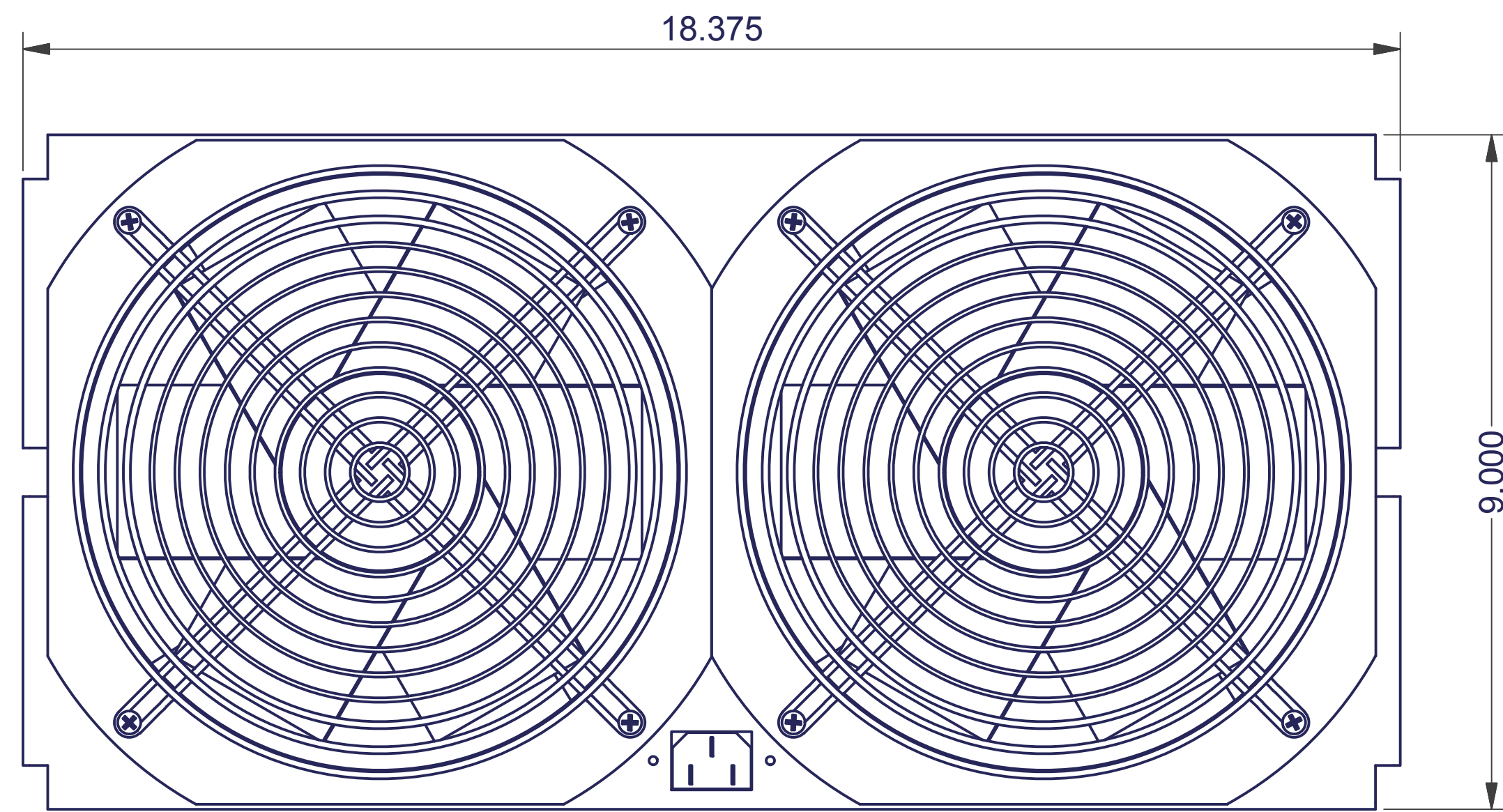
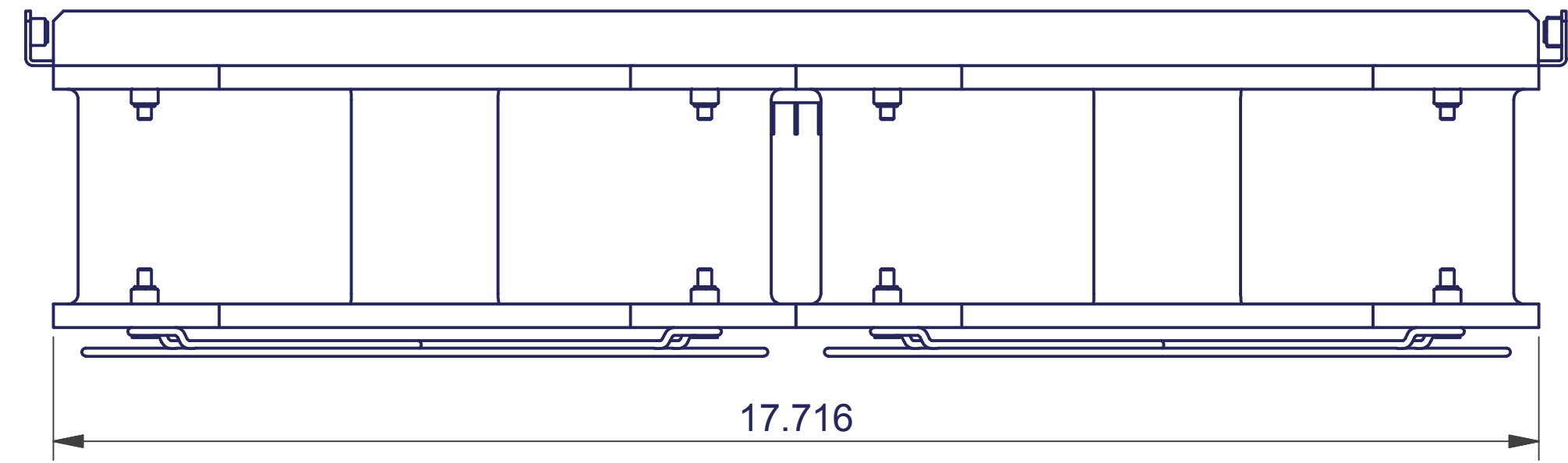
| REVISION HISTORY | | | |
|------------------|-------------|-----------|----------|
| REV | DESCRIPTION | DATE | APPROVED |
| 1 | ECO-03112 | 1/24/2011 | FED |

SPECIFICATIONS:

CFM: (600/ FAN) x 2 = 1200
 VAC = 115
 Hz = 50/60
 WATTS = 144
 LINE AMPS = 1.40A
 dba = 62 TO 64



| Bill of Material | | | | | | |
|------------------|---------------|--------------|-----|--|-------------------|----------|
| ITEM | PART NUMBER | STOCK NUMBER | QTY | DESCRIPTION | FILE NAME | REVISION |
| 1 | ECFT42X100 | | 1 | EXHAUST CHIMNEY FAN TRAY FOR 42"D ES CHIMNEYS - DETAIL | I007853.ipt | 0 |
| 2 | OA225AN-11-WB | | 2 | 115 VOLT, 600 CFM, 8.9" ORION FAN | OA225AN-11-WB.ipt | - |
| 3 | 832STOPNUT | | 20 | 8-32 ELASTIC STOP NUT, 2ZN3687 | 8-32STOPNUT.ipt | - |
| 4 | 8/32X3/4SC | | 16 | #8-32 x 3/4" L ZN PLATED FAN SCREW | 8-32X750SC.ipt | - |
| 5 | G-225 | | 4 | FINGER GUARD FOR #OA225 FAN, KNIGHT ELEC. OR EQUIV. | G-225.ipt | - |
| 6 | XF0312IEC | | 1 | 12 FOOT POWER CORD, NEMA 5-15 PLUG | | |
| 7 | 07071CW | | 1 | IEC CONNECTOR - ARCO | 07071CW.ipt | - |
| 8 | 0404RPF | | 2 | #4-40 x 1/4" TAPTITE PHIL FLAT HD ZN. PL. SCREW | 0404RPF.ipt | - |
| 9 | C45-2DCT | | 1 | 2 FAN POWER WIRING HARNESS ASSEMBLY (KNIGHT) | | |
| 10 | XF34 | | 1 | 2 FAN GROUNDING WIRING HARNESS ASSEMBLY | | |



INTERPRET DRAWING PER ASME Y14.5M-1994
 DIMENSIONAL LIMITS APPLY
 AFTER APPLICATION OF FINISH
 DRAWING NOT TO SCALE
 TOLERANCE UNLESS OTHERWISE NOTED:
 ANGULAR +/- 1'
 .XXXX +/- .010
 .XXX +/- .015
 .XX +/- .030
 .X FOR REF. ONLY

NOTICE:
 Use of this document is subject to a confidentiality and nondisclosure agreement with Great Lakes Case & Cabinet Co., Inc. (GLCC) and may not be reproduced, disclosed or utilized in whole or in part without prior written authorization from GLCC.

PART NUMBER: **ECFT42**
 QTY PER UNIT: 1
 MATERIAL TYPE: CRS
 MATERIAL GAUGE: 16 GA
 FINISH: POWDERCOAT
 DRAWN DATE: 1/30/2009
 CD DATE: 1/24/2011
 CHECKED & APP. DATE: 1/24/2011
 WSS

TITLE: **EXHAUST CHIMNEY FAN TRAY FOR 42"D 'ES' CHIMNEY - TOP LEVEL**
 GREAT LAKES CASE & CABINET CO., INC.
 P.O. BOX 551 EDINBORO, PA 16412
 PHONE (814) 734-7303 FAX (814) 734-3907
 E-MAIL glcc@greatcabinets.com



THIRD ANGLE PROJECTION
 UNLESS OTHERWISE SPECIFIED
 ALL DIMENSIONS ARE IN INCHES

DWG NO: **ECFT42** REV: **1** SHEET: 1 OF 1