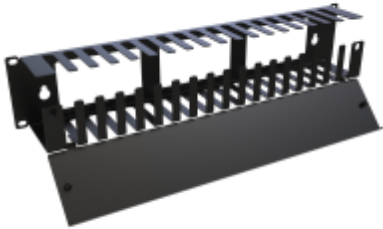




*Quality Products. Service Excellence.*

## Horizontal Steel Finger Cable Manager *RB-HSF Series*

### SKID SAVER



### Features:

- Constructed in 16-gauge steel.
- Snap open, lift-off/hinged door.
- Openings in the rear for cable entry.
- Designed to fit standard 19" rails.
- Requires mounting hardware.
- Includes wall mounting points for non-rackmount applications.
- Finished in textured RAL9005 black powder paint finish.
- TAA-compliant for GSA Schedule purchases.
- RoHS Compliant.
- Manufactured in North America within an ISO 9001:2015 certified facility.

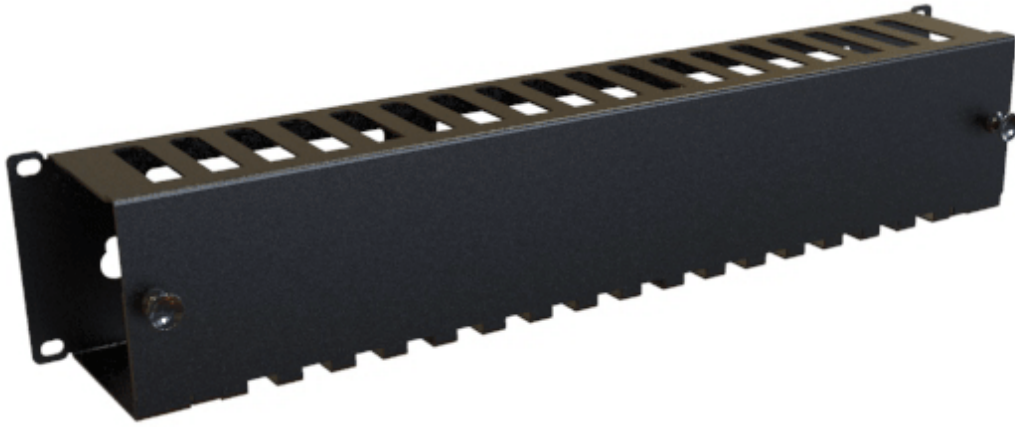
### Accessories

- Mounting Hardware

**RACK BASICS®**

A HAMMOND BRAND





Part No.	Height	Overall Dimensions			Rack Units
		Width	Depth		
RB-HSF1	1.75	19.00	3.06		1U
RB-HSF2	3.50	19.00	3.06		2U

**Estimated Cable Fill Capacities**

Rack Units	Description	Opening Quantity	Recommended Cable Fill (50% Fill Ratio)			Maximum Cable Fill (100% Fill Ratio)		
			Cat 5e	Cat 6	Cat 6a	Cat 5e	Cat 6	Cat 6a
1U	Channel Opening	1	35	22	16	70	45	31
	Per Finger Opening	36	16	10	8	32	20	14
	Rear Pass Through	3	63	26	18	82	52	54
2U	Channel Opening	1	76	48	34	151	97	67
	Per Finger Opening	36	16	10	8	32	20	14
	Rear Pass Through	3	63	26	18	82	52	54

*Data subject to change without notice*

© 2023. Hammond Manufacturing Ltd. All rights reserved.