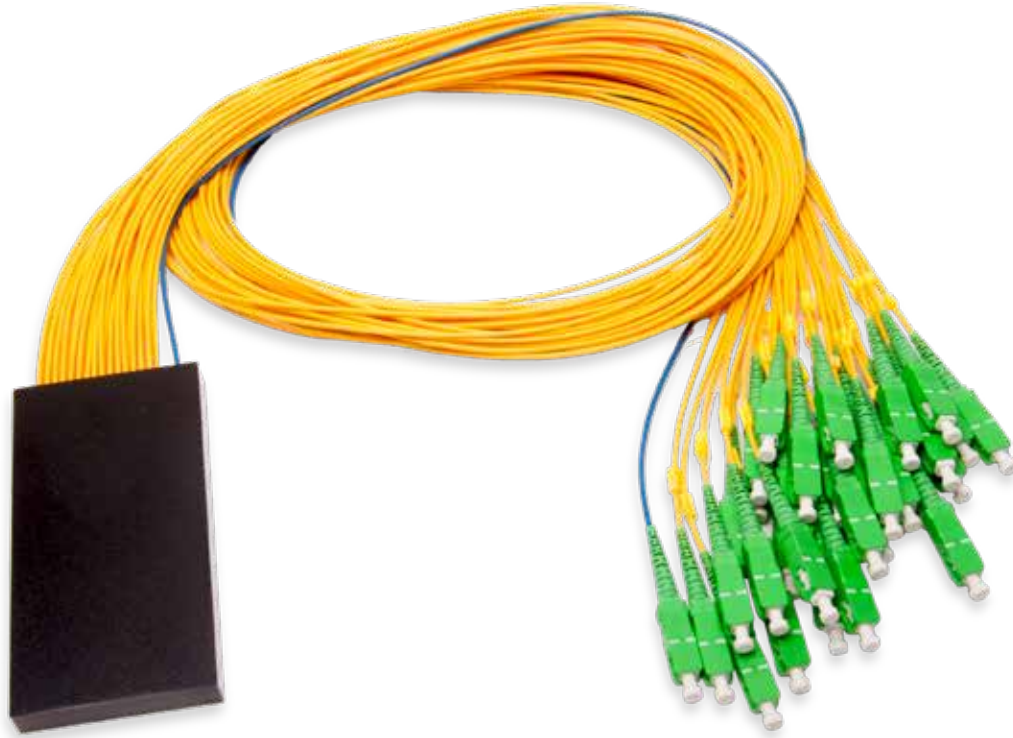


OPTIMUS FIBER HUB SPLITTER MODULE



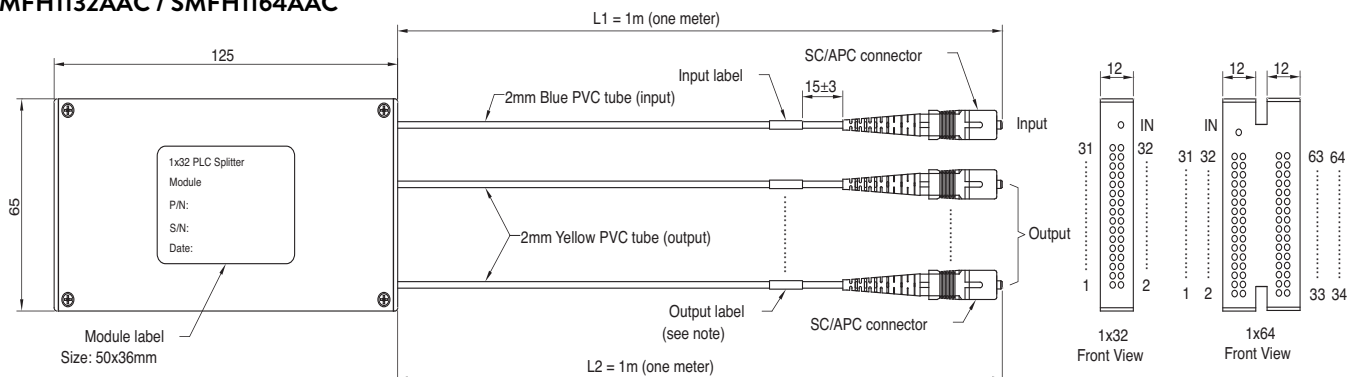
FEATURES

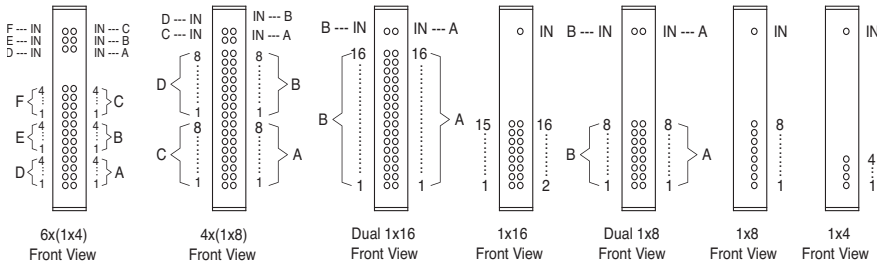
- High Reliability and Performance
- All PLC splitters exceed Telcordia GR 1209 and GR 1221 specifications
- All connectors exceed Telcordia GR 326 specifications

APPLICATIONS

- Telecommunications
- Network Monitoring
- FTTX

SMFH1132AAC / SMFH1164AAC





Note: The single PLC Splitter modules will not have an input label.

For example :

1x32 Module

Input: no label

Output: 1, 2, 3 ... 32

Dual 1x16 Module

1x16 input A: A

1x16 output A: A-1, A-2, A-3 ... A-16

1x16 input B: B

1x16 output B: B-1, B-2, B-3 ... B-16

SPECIFICATIONS (ALL TYPES)

CHANNEL NUMBER	1x4	1x8	1x16	1x32	1x64
Operating Wavelength Range (nm)	1260 ~ 1650	1260 ~ 1650	1260 ~ 1650	1260 ~ 1650	1260 ~ 1650
Insertion loss Max. (dB) ^{1,2,3}	8.0	11.2	14.2	17.5	21.0
Uniformity Max. (dB) ^{1,2,3}	0.8	1.0	1.4	1.7	2.5
PDL Max. (dB) ^{1,2,3}	0.2	0.3	0.3	0.3	0.4
Return Loss Min. (dB) ^{1,2,3}	55	55	55	55	55
Directivity Min. (dB) ^{1,2,3}	55	55	55	55	55
Operating /Storage Temperature (°C)	-40 ~ +85°	-40 ~ +85°	-40 ~ +85°	-40 ~ +85°	-40 ~ +85°
Fiber Type	G.657A1	G.657A1	ITU-T G.657.A1	ITU-T G.657.A1	ITU-T G.657.A1
Dimensions LxWxH (mm)	125 x 65 x 12	125 x 65 x 12	125 x 65 x 12	125 x 65 x 12	125 x 65 x 27.9
Input Connector Type	SC/APC	SC/APC	SC/APC	SC/APC or LC/APC	SC/APC or LC/APC
Output Connector Type	SC/APC	SC/APC	SC/APC	SC/APC or LC/APC	SC/APC or LC/APC

1. Measured at room temperature 2. Measured at 1310 and 1550nm 3. Including PDL loss

RECOMMENDED PART NUMBERS

PART #	DESCRIPTION
SMFH1132AAC	1x32 splitter module for Green Hornet Fiber Hub, SC/APC
SMFH1164AAC	1x64 splitter module for Green Hornet Fiber Hub, SC/APC



CHANNELL

Where The Industry Connects.

www.channell.com