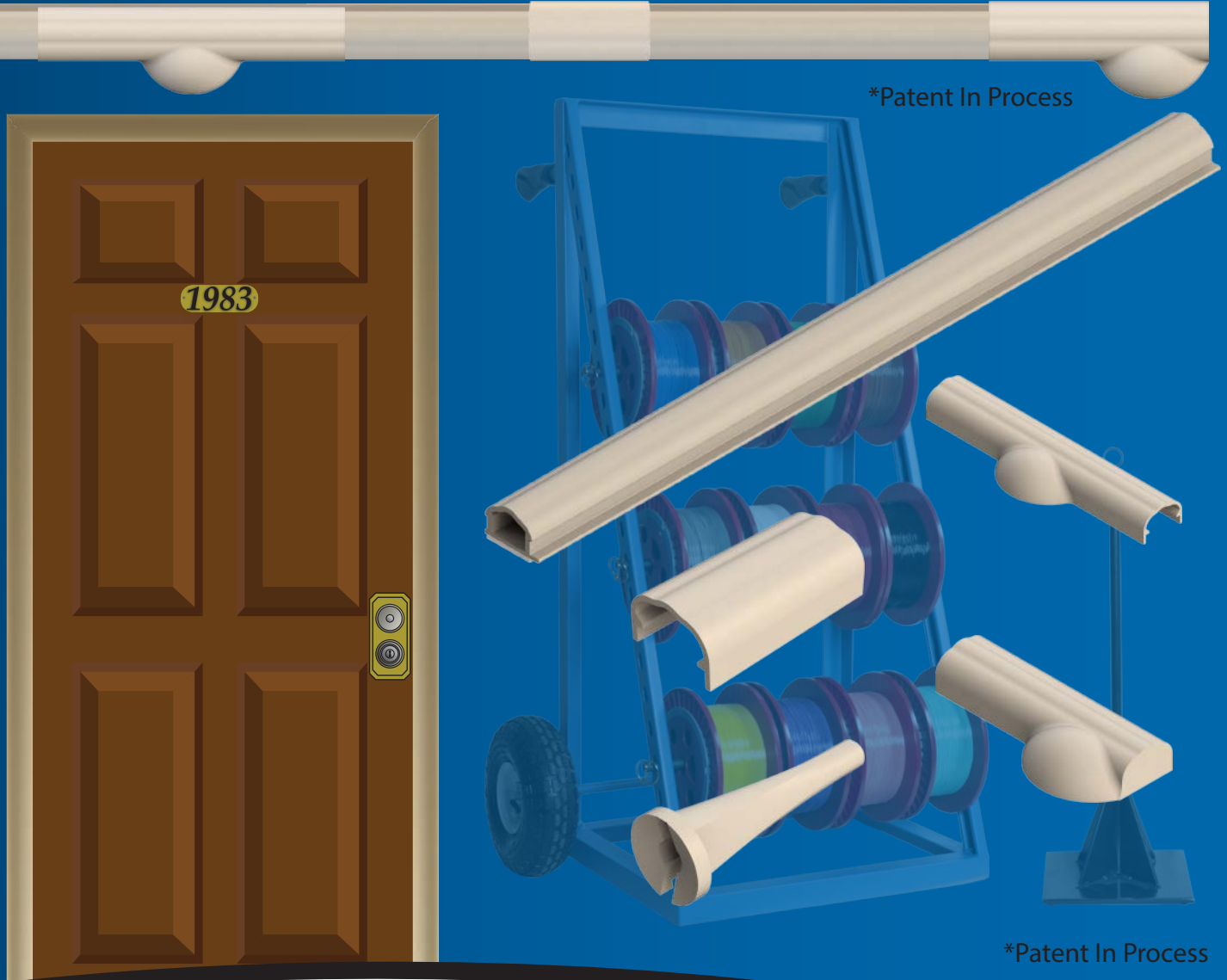


# FTTX-MDU MICRO MOLDING™

## Fiber Deployment Raceway System



Micro Molding is a compact design for Multi Dwelling Units (MDU's) and commercial fiber building applications for interior use. The Micro Molding is designed to house up to 12 900um fibers.

**Multilink**®

[WWW.GOMULTILINK.COM](http://WWW.GOMULTILINK.COM)

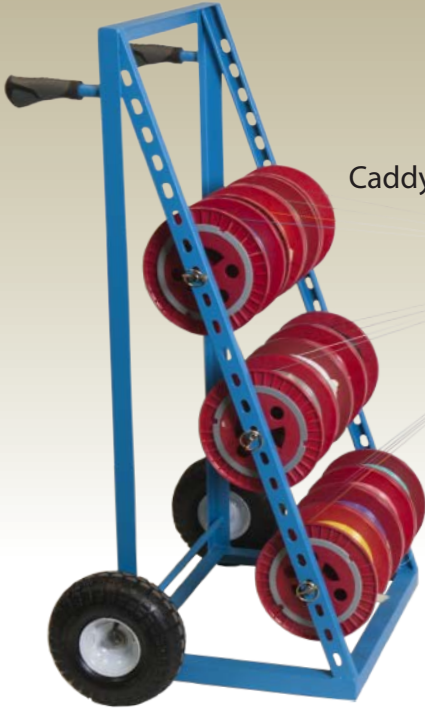
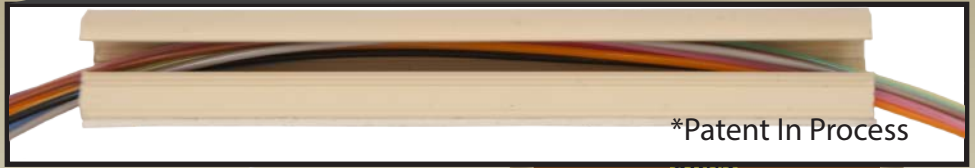


SIX SIGMA

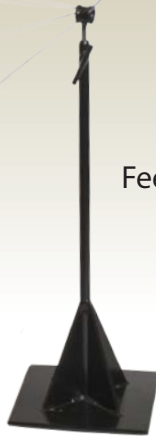


[youtube.com/gomultilink](https://youtube.com/gomultilink)

Multilinks Caddy Rack and Feeder Stand allow for fiber distribution into the Micro Molding.



Caddy Rack



Feeder Stand



## FTTX - MDU Micro Molding



Fiber Feed Plug



Seam Cover



4 Way Fitting



3 Way Fitting



Access Deployment Cap



A.D. Left End



A.D. Right End



FWP-2SC-2SP



Inside Corner



Outside Corner



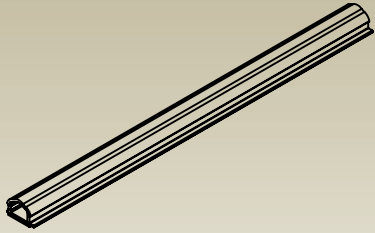
Flat Elbow



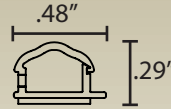
Caddy Rack & Feeder Stand

Mounting locations are at 8" spans to align with studs for easy installation

\*Patent In Process



**Paintable**  
Paintable with latex based paint



Micro Molding  
Actual Size 1:1



065-934-20



065-935-20



065-936-20



065-937-20



065-938-20



065-939-20



065-940-20



065-941-20



065-942-20



065-943-20



065-944-20



065-945-20

Stock ID	Description	Qty.
065-934-20	SM Corning 900um ClearCurve XB Blue 4500 Ft.	1
065-935-20	SM Corning 900um ClearCurve XB Orange 4500 Ft.	1
065-936-20	SM Corning 900um ClearCurve XB Green 4500 Ft.	1
065-937-20	SM Corning 900um ClearCurve XB Brown 4500 Ft.	1
065-938-20	SM Corning 900um ClearCurve XB Slate 4500 Ft.	1
065-939-20	SM Corning 900um ClearCurve XB White 4500 Ft.	1
065-940-20	SM Corning 900um ClearCurve XB Red 4500 Ft.	1
065-941-20	SM Corning 900um ClearCurve XB Black 4500 Ft.	1
065-942-20	SM Corning 900um ClearCurve XB Yellow 4500 Ft.	1
065-943-20	SM Corning 900um ClearCurve XB Violet 4500 Ft.	1
065-944-20	SM Corning 900um ClearCurve XB Rose 4500 Ft.	1
065-945-20	SM Corning 900um ClearCurve XB Aqua 4500 Ft.	1

### Micro Molding Ordering Guide

Stock ID (Ivory)	Stock ID (Linen-White)	Description	Qty.
039-642-10	039-642-11	Micro Molding with Adhesive Back	400 ft.
039-643-10	039-643-11	Micro Molding without Adhesive Back	400 ft.
649-222-20	649-222-21	Seam Cover	10
649-223-20	649-223-21	Fiber Feeder Plug	10
649-224-20	649-224-21	Access Deployment Right Hand End Cap	10
649-225-20	649-225-21	Access Deployment Cap	10
649-226-20	649-226-21	3 Way Fitting	10
649-227-20	649-227-21	4 Way Fitting	10
649-228-20	649-228-21	Access Deployment Left Hand End Cap	10
10-9409	10-9408	Outside Corner	10
10-9407	10-9406	Inside Corner	10
10-9410	10-9411	Flat Elbow	10
065-773-11	065-773-12	FWP-2SC-2SP	10
072-429-50 *Blue and Black		Fiber Caddy Rack & Feed Stand Package	1

### Base Specification Details

Property	Test Method	Typical Value
Cell Classification:	ASTM D4216	14413233
Specific Gravity:	ASTM D792	1.42
Molding Shrinkage:	ASTM D955	2-3 x 10 <sup>-3</sup> in/in
Tensile Yield:	ASTM D638	6100 psi
Tensile Modulus:	ASTM D638	360000 psi
Tensile Impact:	ASTM D1822	75 ft-lbs/in <sup>2</sup>
Flexural Strength:	ASTM D790	11000 psi
Flexural Modulus:	ASTM D790	410000 psi
Drop Dart Impact, 23C, in-lbs/mil. (c.125 Tup, Procedure A):	ASTM D4226	1.2
Notched Izod Impact Strength:	ASTM D256	18 ft-lbs/in
Hardness, Shore D:	ASTM D2240	80
Hardness, Rockwell R:	ASTM D785	112
Heat Deflection Temperatures at 264psi:	ASTM D648	162
Coefficient of Thermal Expansion:	ASTM D696	3.5 x 10 <sup>-5</sup>
Flame Rating:	UL94	V-0

\*Patent In Process



[www.youtube.com/gomultilink](http://www.youtube.com/gomultilink)

440.366.6966 | [www.gomultilink.com](http://www.gomultilink.com)

Copyright 2015 Multilink Inc. • All rights reserved  
Specifications subject to change without notice  
Rev. May 21, 2015