



FRM-1RU-2X-TS-DOT

Product Description

The Multilink FRM-1RU-2X-DOT is a 1 Rack unit (1.75") termination panel. With standard recessed mounting brackets designed for EIA 19" racks. Unit is designed to support two adapter panels (see catalog for list of panels), one 12ct Splice tray and one 12 Fiber Pigtail. This unit can be Pre-terminated to fit your exact requirements. It has a removable cover with single swell latch to allow for easy access to the adapter panels. The FRM-1RU-2X-DOT is just one of a family of units that support fiber terminations in rack mount applications.

General Specifications

Dimensions:	1.72" H x 12.25" W x 7.68" D (excluding brackets)
Weight:	5.1 lbs.
Panels:	(2) Multilink Adapter Panels (see individual panel capacities)
Splice Trays:	(1) 612-SSTP (12 single splices per tray)
Material:	16 Gauge Steel
Coating:	Electrostatic polyester powder coat paint
Finish:	Black textured

Ordering Information

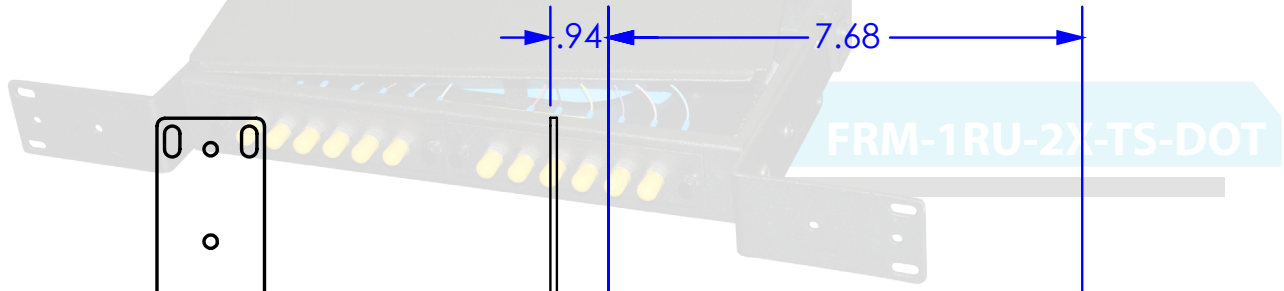
<u>Stock ID</u>	<u>Description</u>
045-586-10	FRM-1RU-2X-TS-DOT
065-209-10	612-SSTP (12 Single Fusion Splice Tray)

NOTE: For details on available adapter panels please refer to the Multilink Catalog

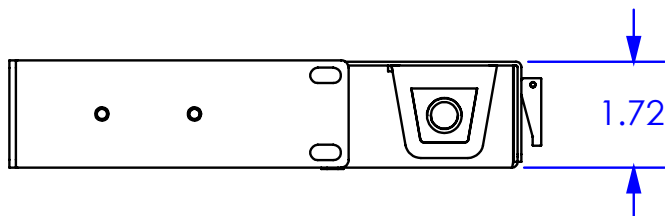
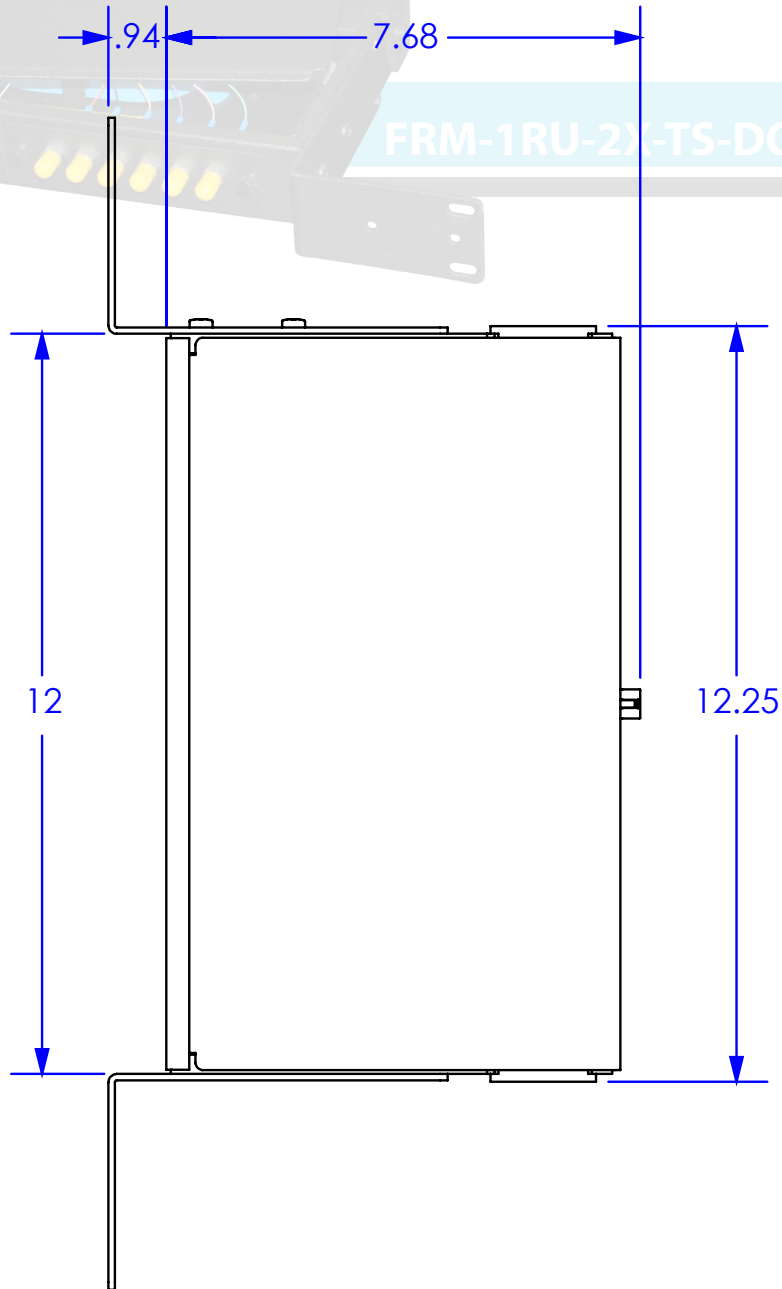
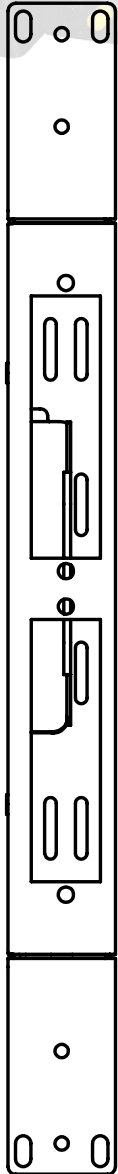
Contact Us

North America	Europe, Middle East & Africa	Latin & South America
Tel: +1 440 366 6966	Tel: +1 440 366 6966	Tel: +1 440 366 6966
Fax: +1 440 366 6802	Fax: +1 440 366 6802	Fax: +1 440 366 6802
Email: engsupport@gomultilink.com	Email: engsupport@gomultilink.com	Email: lasupport@gomultilink.com

Dimensional Specs.



FRM-1RU-2X-TS-DOT



Contact Us

North America	Europe, Middle East & Africa	Latin & South America
Tel: +1 440 366 6966	Tel: +1 440 366 6966	Tel: +1 440 366 6966
Fax: +1 440 366 6802	Fax: +1 440 366 6802	Fax: +1 440 366 6802
Email: engsupport@gomultilink.com	Email: engsupport@gomultilink.com	Email: lasupport@gomultilink.com