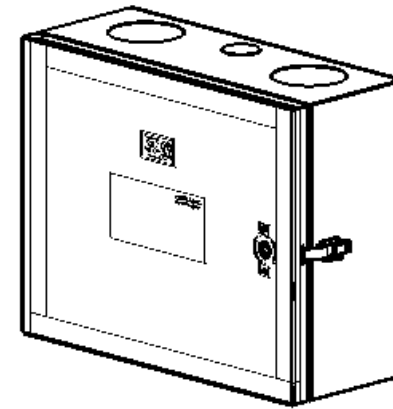
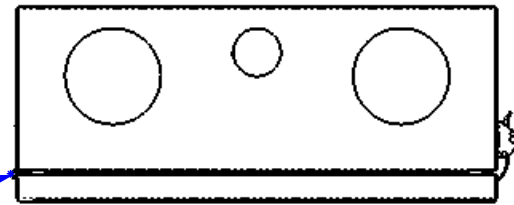


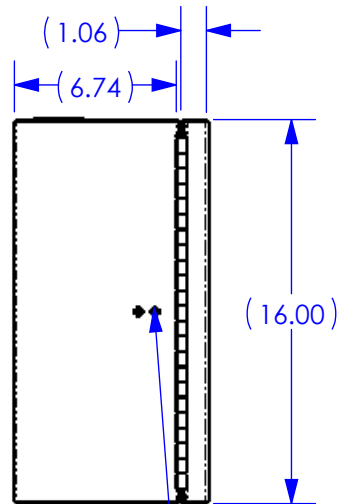
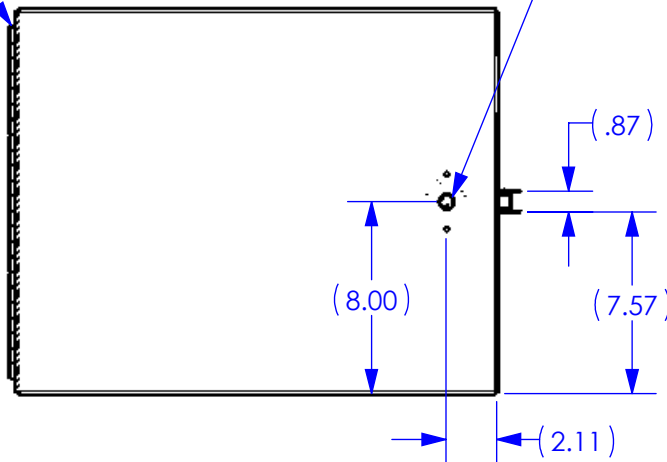
| REV. | ECN # | DESCRIPTION OF CHANGE | DATE    | BY | MFG ENG |
|------|-------|-----------------------|---------|----|---------|
| 01   | N/A   | INITIAL RELEASE       | 5/30/14 | TT |         |
| 05   | 3065  | SEE ECN               | 6/18/13 | TT |         |
|      |       |                       |         |    |         |



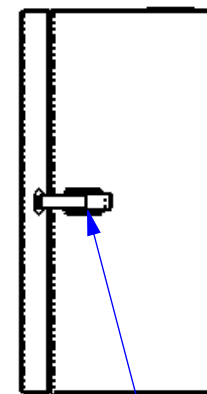
STAINLESS STEEL  
DOOR HINGE



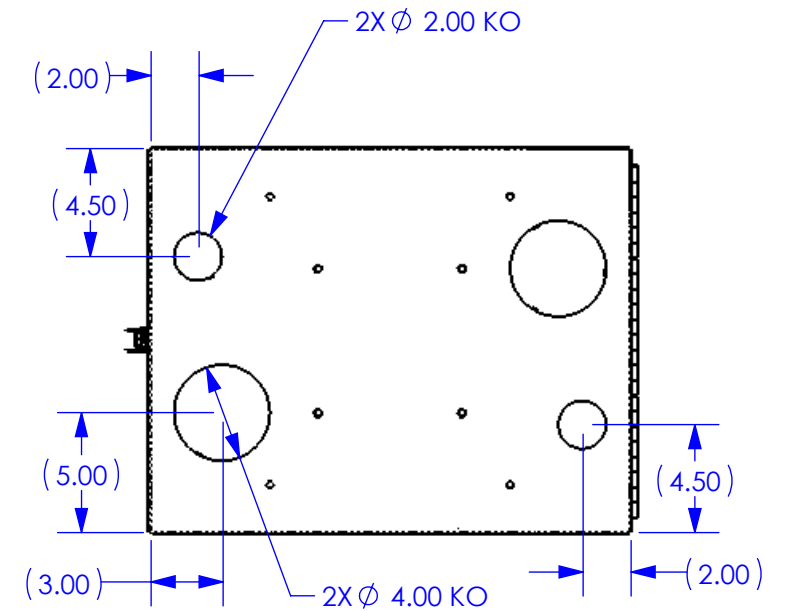
216 CAN WRENCH  
QUARTER TURN  
COMPRESSION  
LATCH LOCK



OPTIONAL  
DRAW LATCH  
MOUNTING WHEN  
DOOR IS MOUNTED  
RIGHT HAND SWING

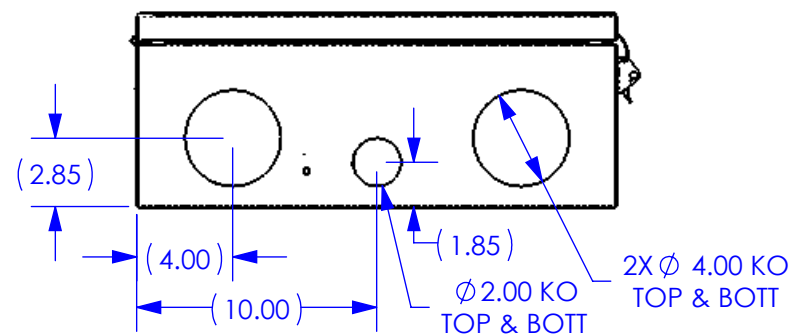


OVER CENTER  
DRAW LATCH  
STAINLESS STEEL  
W/PADLOCK  
OPTION



NOTE:

- ENCLOSURE MATERIAL:  
16 GA. / 0.063" GALVANNEALED STEEL
- ENCLOSURE FINISH:  
GRAY POLYESTER POWDER COAT
- STAINLESS STEEL HARDWARE



UNLESS OTHERWISE SPECIFIED  
DIMENSIONS ARE IN INCHES  
TOLERANCES ARE:  
FRACTIONS: ±1/32 DECIMALS: .XX±.03 ANGLES: ±1°  
.XXX±.010  
ALL FLATS TO BE ±.005  
**NO SHARP EDGES OR  
BURRS ALLOWED**  
MATERIAL: SEE B.O.M.  
FINISH: ASA-70 GRAY  
DO NOT SCALE DRAWING

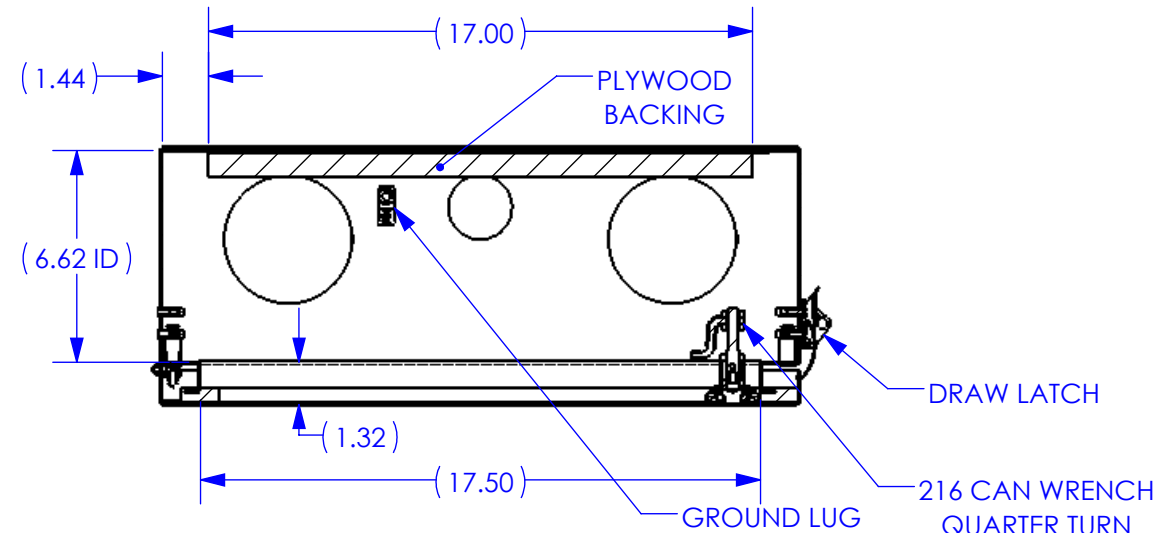
THIS DOCUMENT AND THE INFORMATION  
CONTAINED THEREIN ARE CONFIDENTIAL  
& PROPRIETARY TO MULTILINK AND MAY  
NOT BE COPIED OR DISCLOSED TO OTHERS  
WITHOUT A WRITTEN CONSENT FROM  
MULTILINK. THE INFORMATION IS TO BE  
PROMPTLY RETURNED TO MULTILINK UPON  
REQUEST.  
DRAWN BY: TT DATE: 4/15/11  
CHECKED: DATE:  
MFG ENG: DATE:  
QUALITY ENG: DATE:

**Multilink**

RN1HN4-20168-1CV1DL-  
C-PG-Y-S

SIZE **B** DWG. NO. 050-154-30-REF REV. 05  
SCALE: 1:5 CAD FILE: 050-154-30-REF SHEET: 1 OF 2

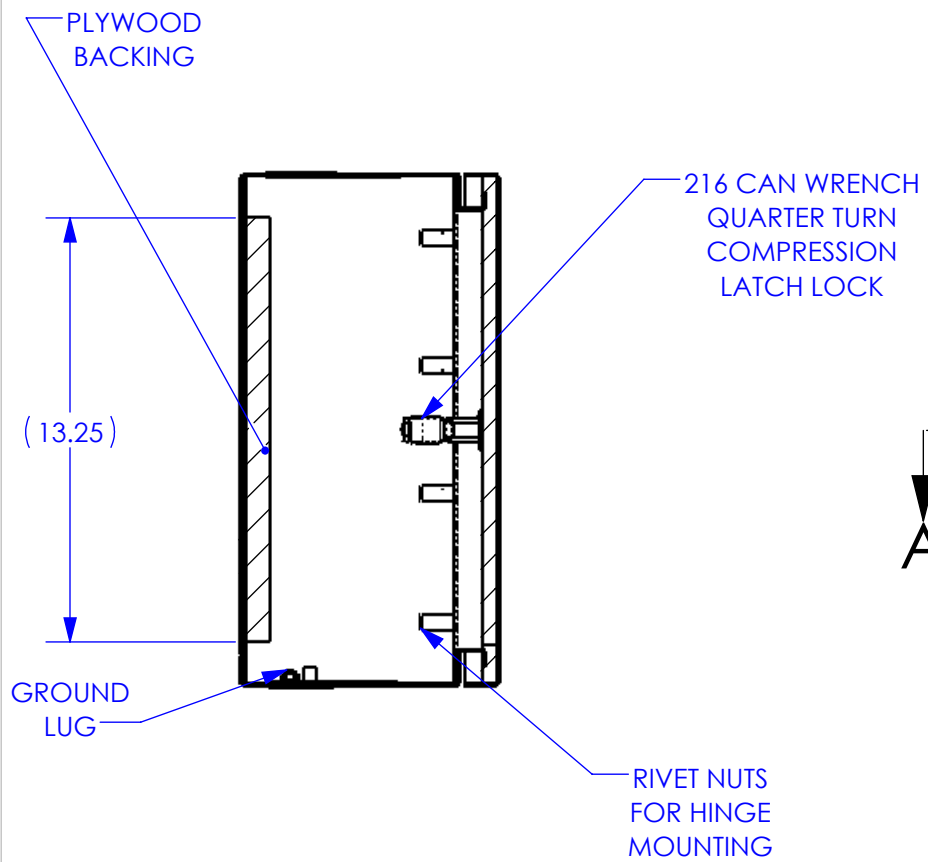
| REV. | ECN # | DESCRIPTION OF CHANGE | DATE    | BY | MFG ENG |
|------|-------|-----------------------|---------|----|---------|
| 01   | N/A   | INITIAL RELEASE       | 5/30/14 | TT |         |
| 05   | 3065  | SEE ECN               | 6/18/13 | TT |         |
|      |       |                       |         |    |         |



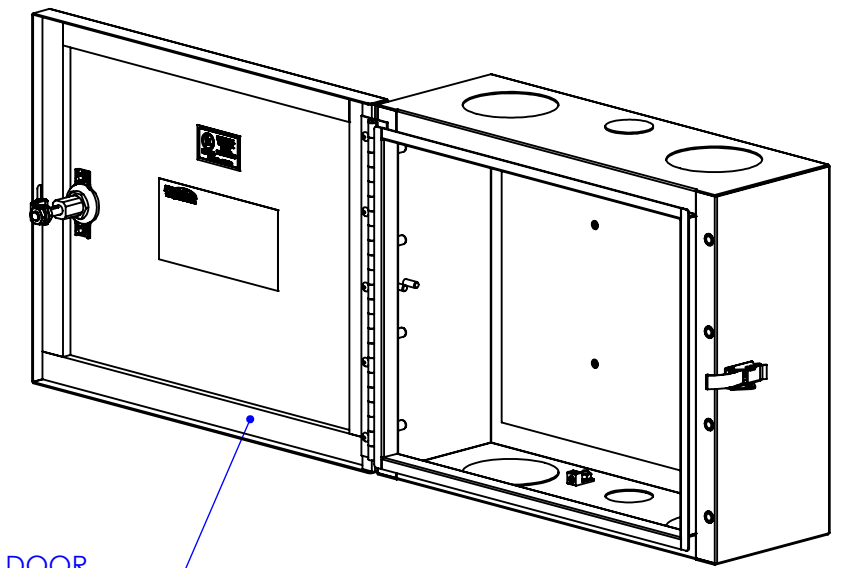
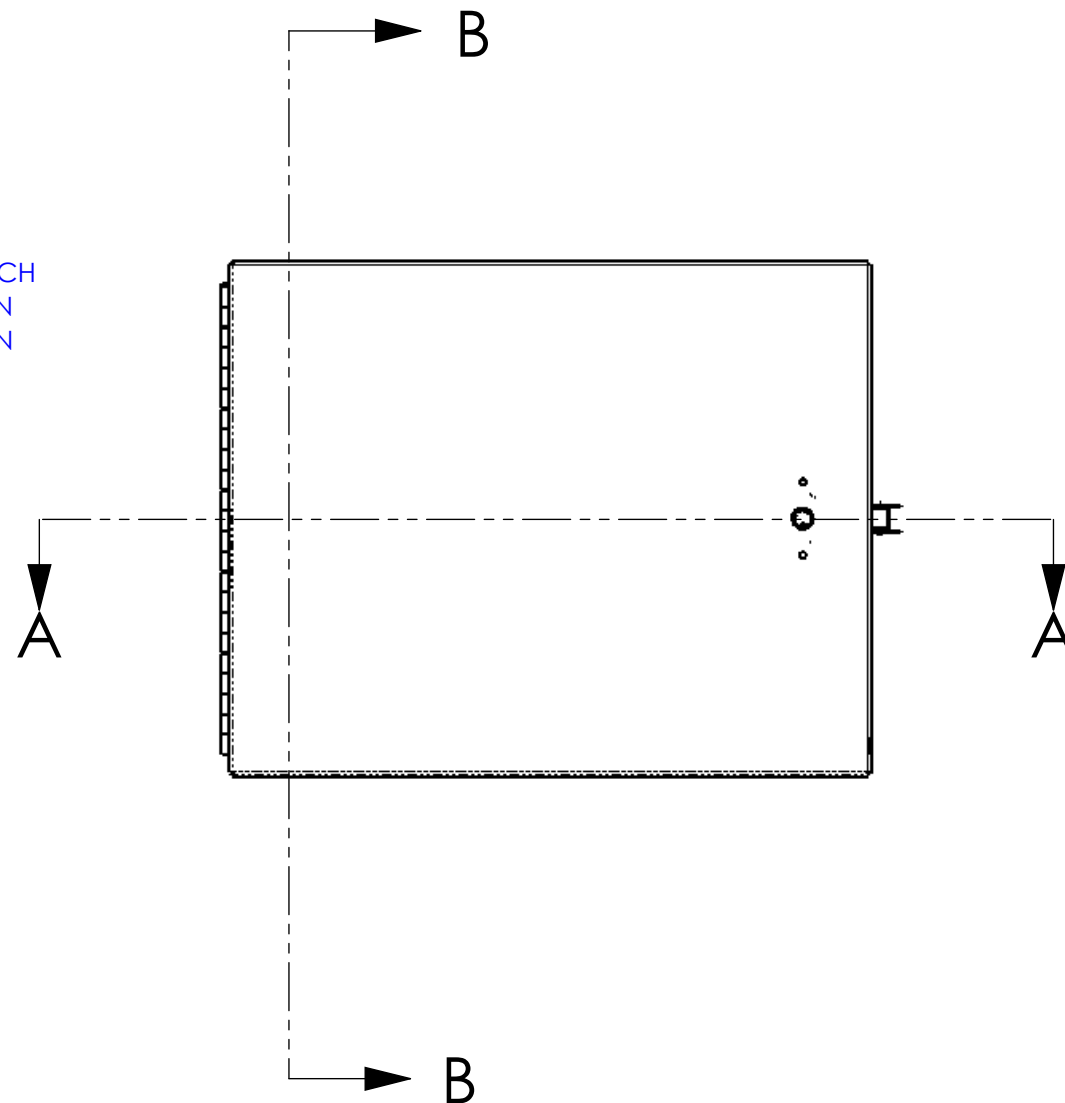
SECTION A-A  
SCALE 1 : 6

NOTE:

1. UNIT EQUIPPED WITH 3/4" PLYWOOD, GROUND LUG, DRAW LATCH AND WEATHERPROOF GASKETING.
2. THE ENTIRE DOOR ASSEMBLY AND DRAW LATCH IS REVERSIBLE AND CAN BE MOUNTED ON THE RIGHT OR LEFT HAND SIDE OF THE ENCLOSURE.
3. THE MOUNTING BRACKET KIT FOR THE ENCLOSURE IS SOLD SEPARATELY.



SECTION B-B  
SCALE 1 : 6



DOOR GASKETING ALL 4 SIDES

|  |              |  |                              |                          |
|--|--------------|--|------------------------------|--------------------------|
| UNLESS OTHERWISE SPECIFIED DIMENSIONS ARE IN INCHES TOLERANCES ARE:<br>FRACTIONS: ± 1/32    DECIMALS: .XX = ± .03    ANGLES: ± 1°<br>.XXX = ± .010<br>ALL FLATS TO BE ± .005 |              | THIS DOCUMENT AND THE INFORMATION CONTAINED THEREIN ARE CONFIDENTIAL & PROPRIETARY TO MULTILINK AND MAY NOT BE COPIED OR DISCLOSED TO OTHERS WITHOUT A WRITTEN CONSENT FROM MULTILINK. THE INFORMATION IS TO BE PROMPTLY RETURNED TO MULTILINK UPON REQUEST. | <b>Multilink</b>             |                          |
| <b>NO SHARP EDGES OR BURRS ALLOWED</b>   |              |  | RN1HN4-20168-1CV1DL-C-PG-Y-S |                          |
| MATERIAL: SEE B.O.M.   | DRAWN BY: TT | DATE: 4/15/11  | SIZE: B                      | DWG. NO. 050-154-30-REF  |
| FINISH: ASA-70 GRAY  | CHECKED:     | DATE:  | REV. 05                      |                          |
| DO NOT SCALE DRAWING   | MFG ENG:     | DATE:  | SCALE: 1:5                   | CAD FILE: 050-154-30-REF |
|  | QUALITY ENG: | DATE:  | SHEET: 2                     | OF 2                     |