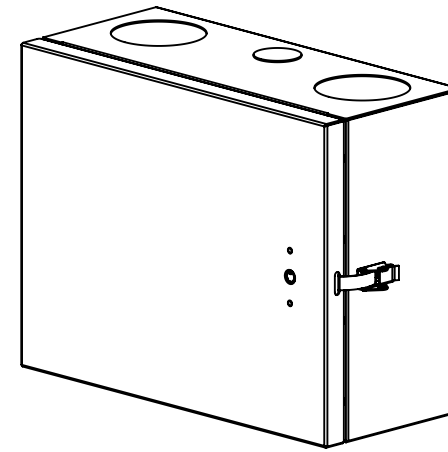
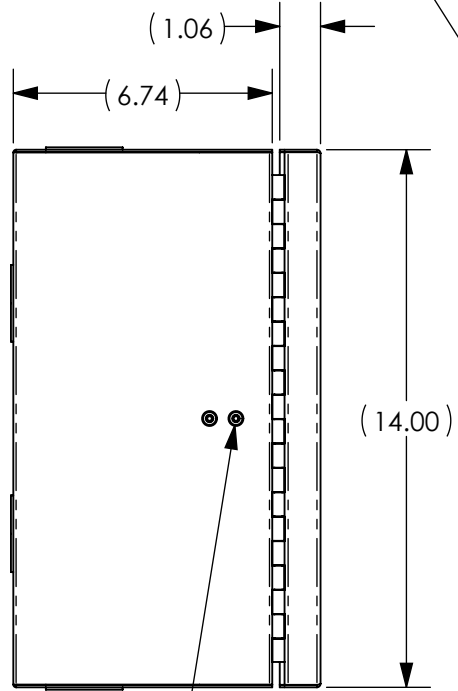
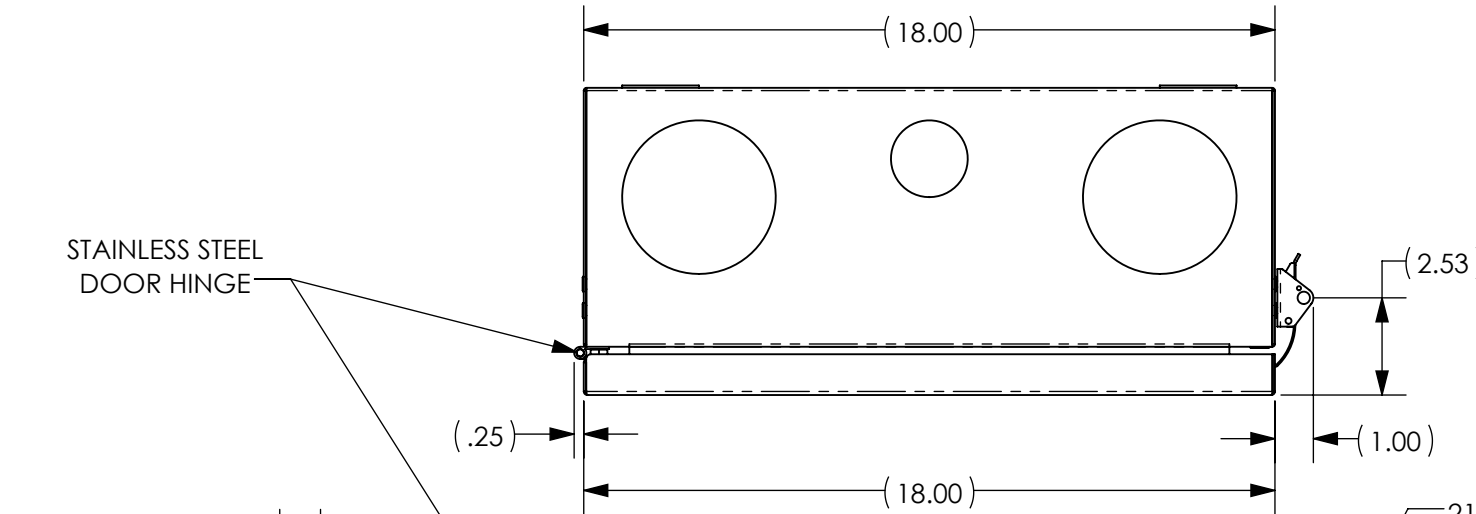


| REV. | ECN # | DESCRIPTION OF CHANGE         | DATE     | BY | MFG ENG |
|------|-------|-------------------------------|----------|----|---------|
| 02   | 2388  | ADDED ITEM 12                 | 5/25/11  | TT |         |
| 03   | 2424  | ADDED UL LABELS               | 6/27/11  | TT |         |
| 04   | 2567  | SEE ECN                       | 12/21/11 | TT |         |
| 05   | 3065  | WAS 035-140-10/NOW 035-151-10 | 6/19/13  | TT |         |

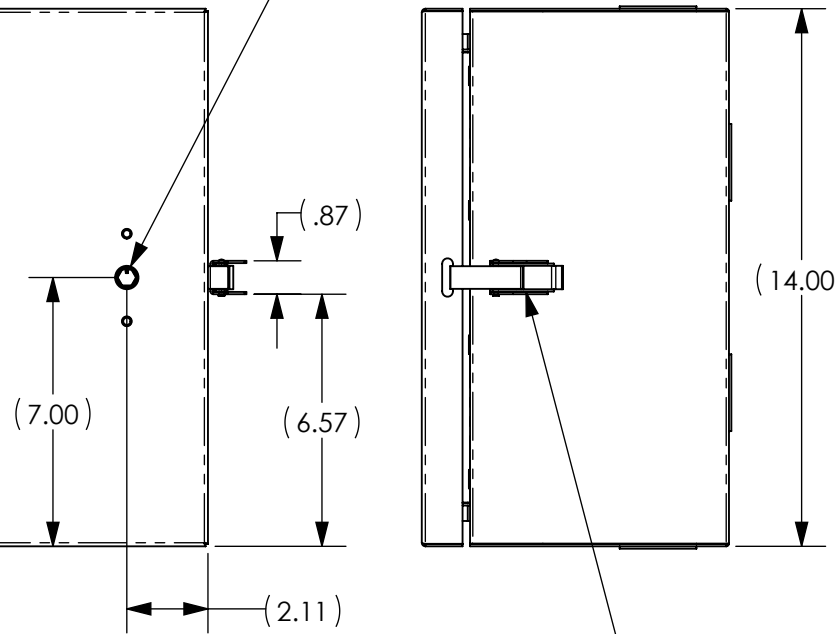


STAINLESS STEEL DOOR HINGE

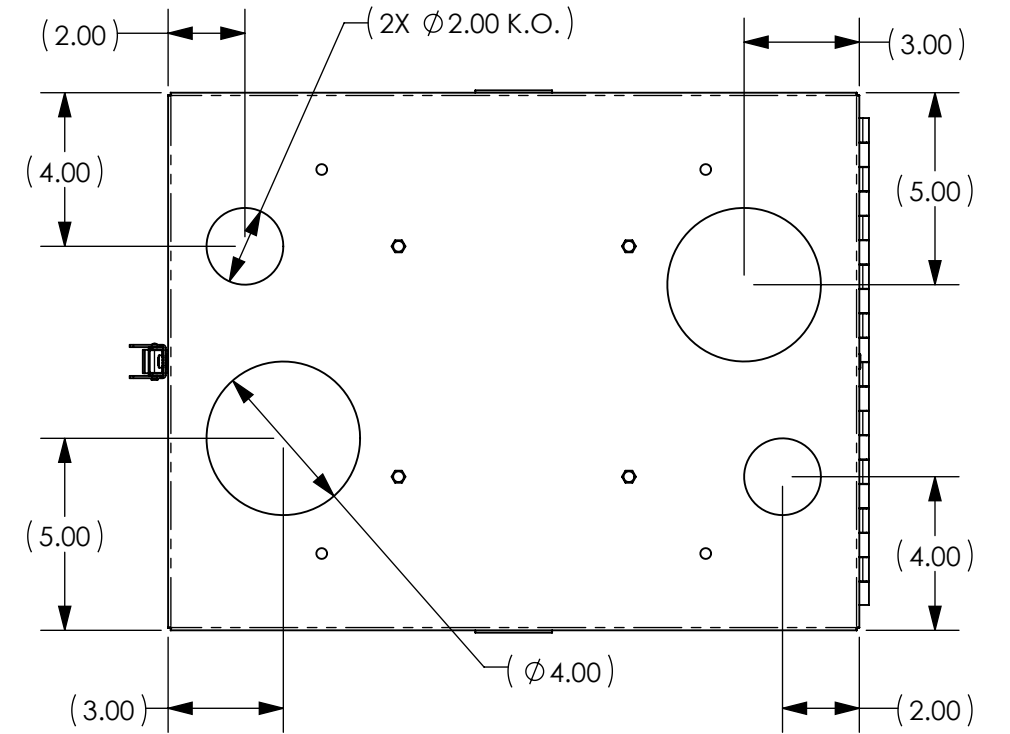


OPTIONAL DRAW LATCH MOUNTING WHEN DOOR IS MOUNTED RIGHT HAND SWING

216 CAN WRENCH QUARTER TURN COMPRESSION LATCH LOCK

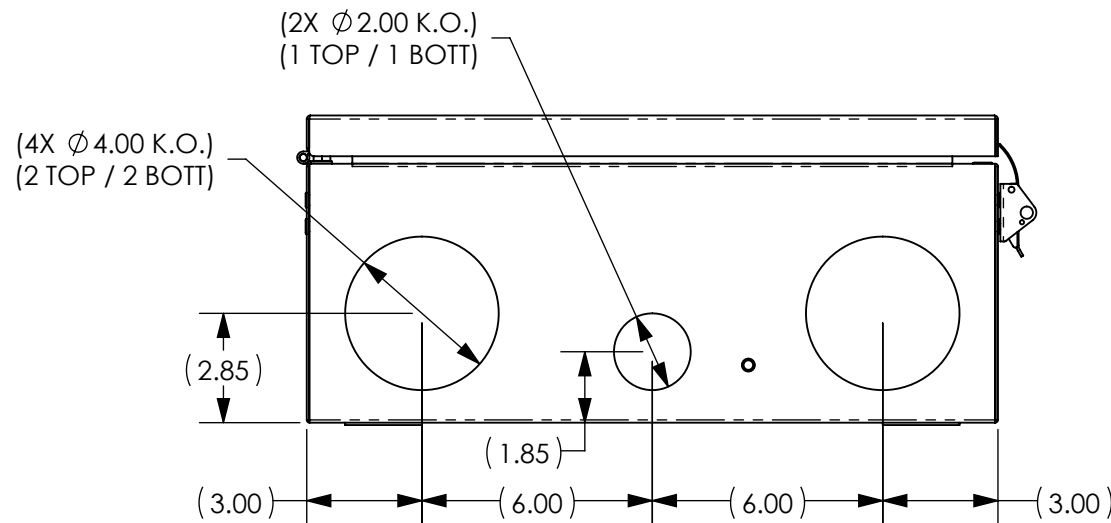


OVER CENTER DRAW LATCH STAINLESS STEEL W/PADLOCK OPTION



NOTE:

- ENCLOSURE MATERIAL:  
16 GA. / 0.063" GALVANNEALED STEEL
- ENCLOSURE FINISH:  
LIGHT GRAY POLYESTER POWDER COAT
- STAINLESS STEEL HARDWARE



UNLESS OTHERWISE SPECIFIED DIMENSIONS ARE IN INCHES TOLERANCES ARE:

FRACTIONS: ±1/32 DECIMALS: .XX=±.03 .XXX=±.010 ANGLES: ±1°

ALL FLATS TO BE ±.005

**NO SHARP EDGES OR BURRS ALLOWED**

MATERIAL: 16 GA/0.063 G-NEAL

FINISH: ASA-70 GRAY

DO NOT SCALE DRAWING

THIS DOCUMENT AND THE INFORMATION CONTAINED THEREIN ARE CONFIDENTIAL & PROPRIETARY TO MULTILINK AND MAY NOT BE COPIED OR DISCLOSED TO OTHERS WITHOUT A WRITTEN CONSENT FROM MULTILINK. THE INFORMATION IS TO BE PROMPTLY RETURNED TO MULTILINK UPON REQUEST.

DRAWN BY: TT DATE: 4/5/11

CHECKED: DATE:

MFG ENG: DATE:

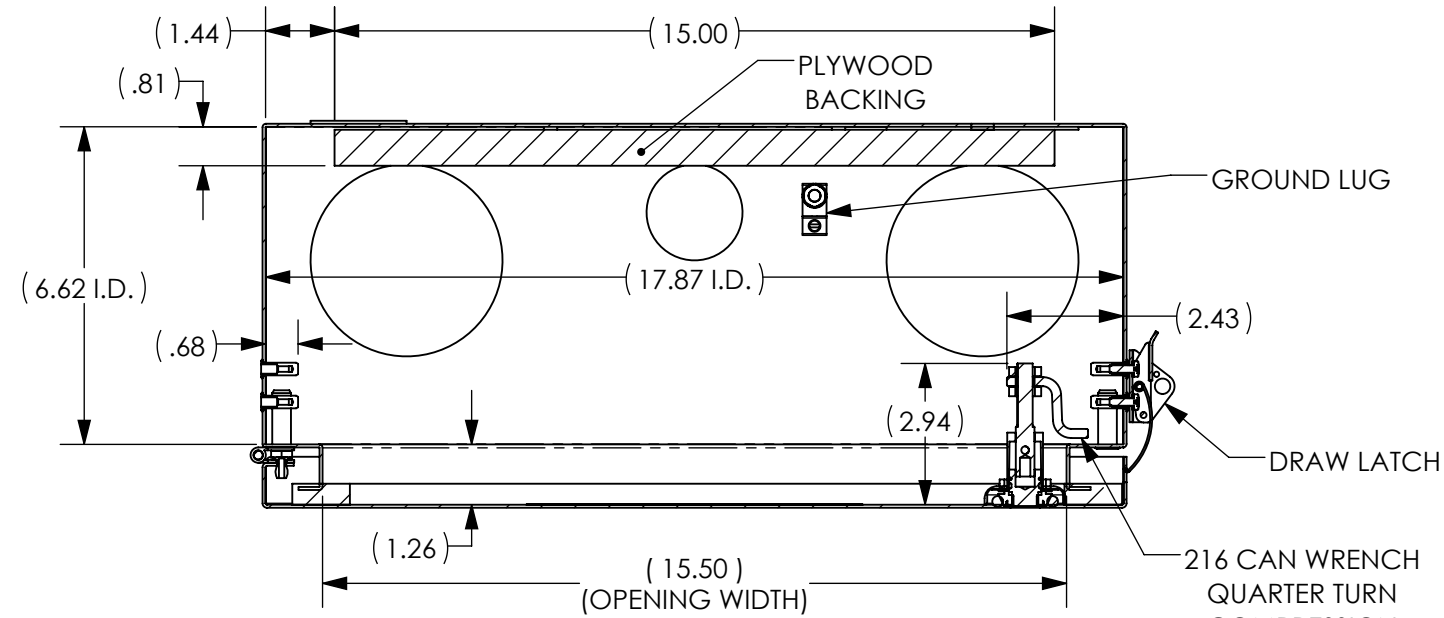
QUALITY ENG: DATE:

**Multilink**

RN1HN4-18148-1CV1DL-C-PG-Y-S

SCALE: 1:5 DWG. NO. 050-202-30-REF REV. 05 SHEET: 1 OF 2

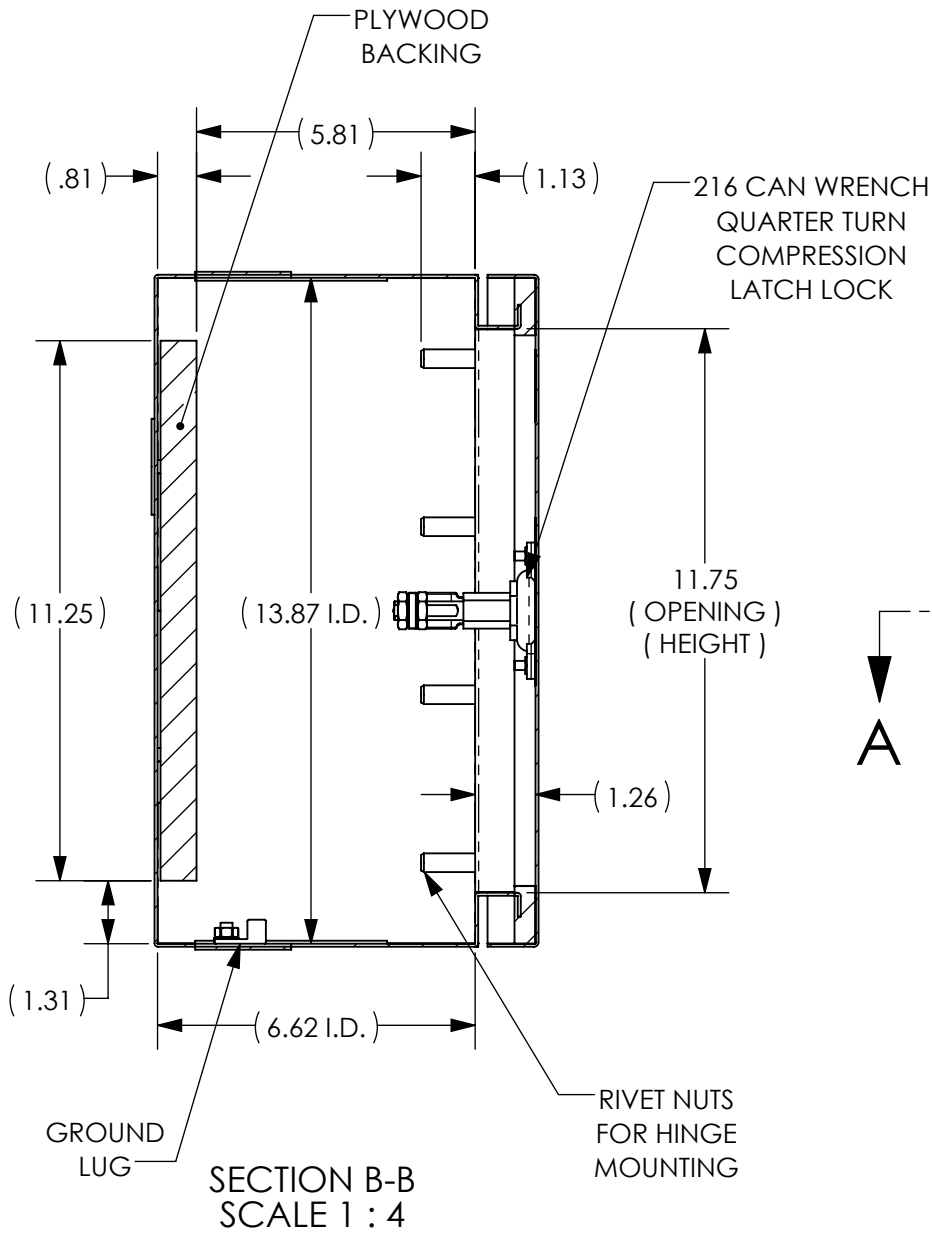
| REV. | ECN # | DESCRIPTION OF CHANGE         | DATE     | BY | MFG ENG |
|------|-------|-------------------------------|----------|----|---------|
| 02   | 2388  | ADDED ITEM 12                 | 5/25/11  | TT |         |
| 03   | 2424  | ADDED UL LABELS               | 6/27/11  | TT |         |
| 04   | 2567  | SEE ECN                       | 12/21/11 | TT |         |
| 05   | 3065  | WAS 035-140-10/NOW 035-151-10 | 6/19/13  | TT |         |



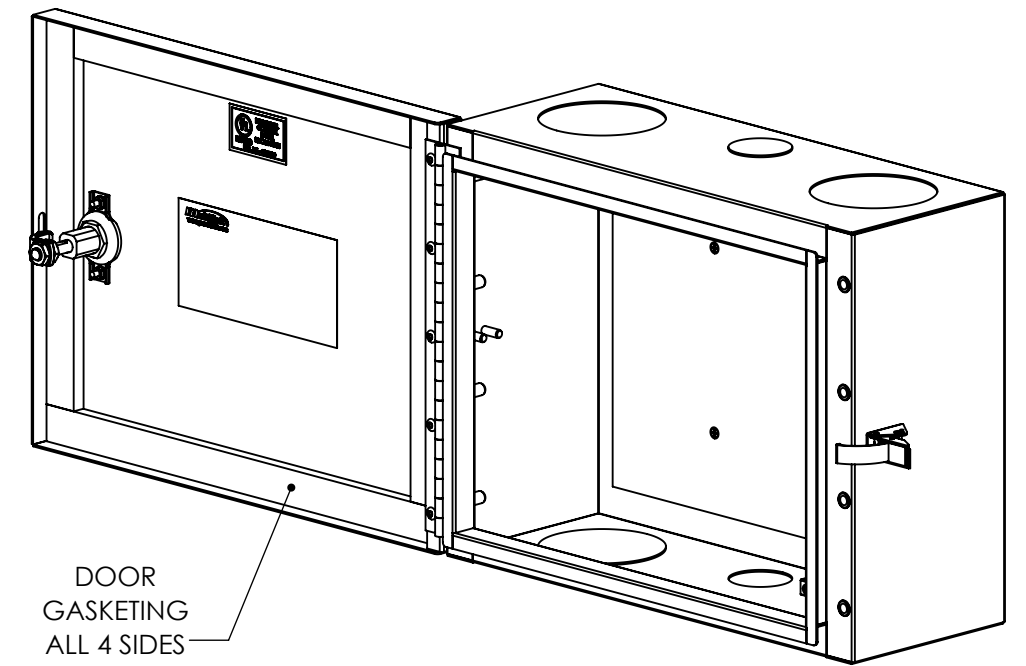
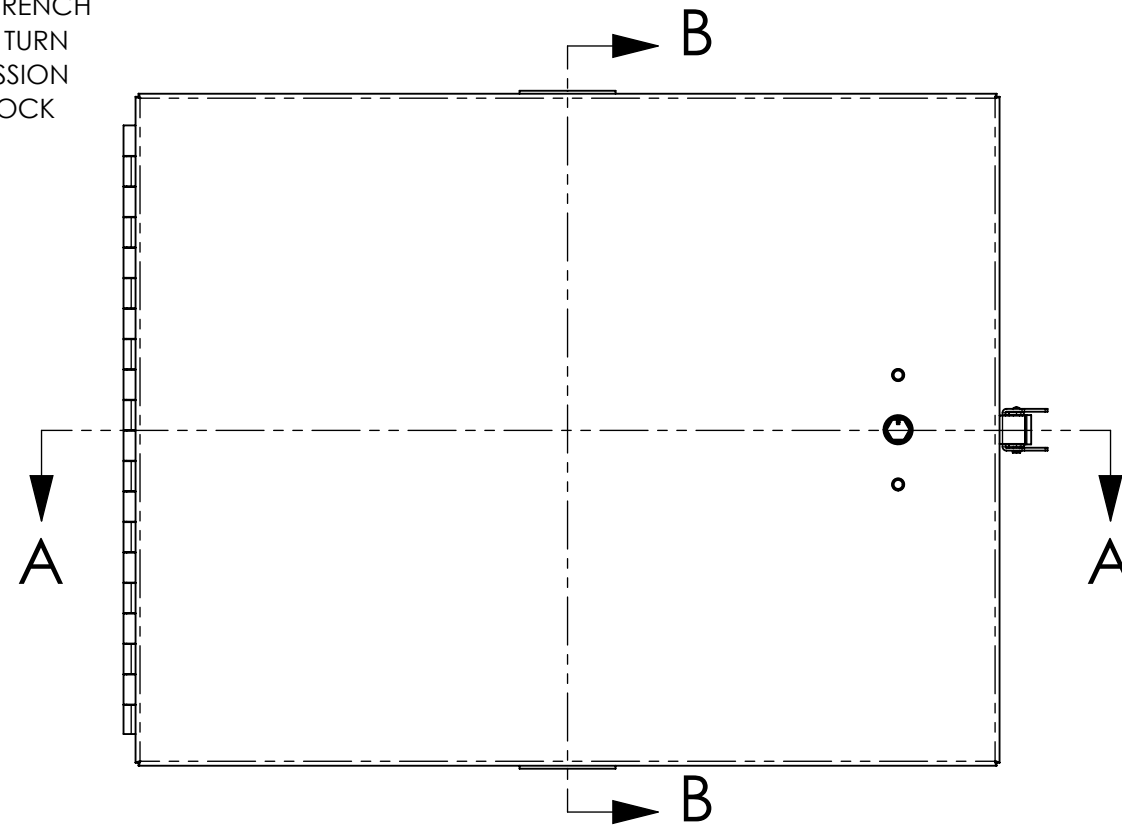
SECTION A-A  
SCALE 1 : 4

NOTE:

1. UNIT EQUIPPED WITH 3/4" PLYWOOD, GROUND LUG, DRAW LATCH AND WEATHERPROOF GASKETING.
2. THE ENTIRE DOOR ASSEMBLY AND DRAW LATCH IS REVERSIBLE AND CAN BE MOUNTED ON THE RIGHT OR LEFT HAND SIDE OF THE ENCLOSURE.
3. THE MOUNTING BRACKET KIT FOR THE ENCLOSURE IS SOLD SEPARATELY.



SECTION B-B  
SCALE 1 : 4



|   |  |  |              |   |  |
|---|--|--|--------------|---|--|
| UNLESS OTHERWISE SPECIFIED DIMENSIONS ARE IN INCHES TOLERANCES ARE:<br>FRACTIONS: ±1/32<br>DECIMALS: .XX=±.03<br>ANGLES: ±1°<br>.XXX=±.010<br>ALL FLATS TO BE ±.005 |  | THIS DOCUMENT AND THE INFORMATION CONTAINED THEREIN ARE CONFIDENTIAL & PROPRIETARY TO MULTILINK AND MAY NOT BE COPIED OR DISCLOSED TO OTHERS WITHOUT A WRITTEN CONSENT FROM MULTILINK. THE INFORMATION IS TO BE PROMPTLY RETURNED TO MULTILINK UPON REQUEST. |              |   |  |
| <b>NO SHARP EDGES OR BURRS ALLOWED</b>  |  | DRAWN BY: TT   | DATE: 4/5/11 |   |  |
| MATERIAL: 16 GA/0.063 G-NEAL  |  | CHECKED:   | DATE:        | SIZE <b>B</b> DWG. NO. 050-202-30-REF             |  |
| FINISH: ASA-70 GRAY   |  | MFG ENG:   | DATE:        | REV. 05   |  |
| DO NOT SCALE DRAWING  |  | QUALITY ENG:   | DATE:        | SCALE: 1:5 CAD FILE: 050-202-30-REF SHEET: 2 OF 2 |  |