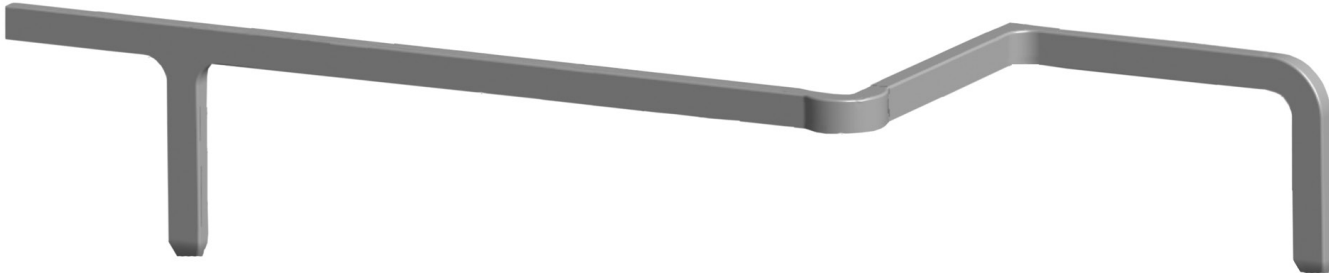


Square Raceway System

Exterior



Product Description

Multilinks Square Exterior Plastic Track Molding is a 2 piece design with a base cover. The molding can be used to route and protect cabling for low voltage data, voice, video, and fiber optic applications. Fittings are available for routing direction changes, extensions, and termination of the molding. All bases incorporate a 1" minimum bend radius as recommended for fiber optic cables. The molding is manufactured using a special purpose profile extrusion alloy resin and the fittings are manufactured using an injection grade resin. The product is easily painted with latex paint.

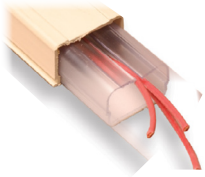
General Specifications

Material:	Raceway: Special Purpose Profile Extrusion Alloy Rigid PolyVinyl Chloride Fittings: Impact Modified Flame Retardant Polybutylene Terephthalate
Color:	Interior Ivory, Linen White
Operating Temp. Range:	-18°C to 58°C (0°F to 136°F)
Installation Temp. Range:	-18°C to 45°C (0°F to 113°F)
Chemical Resistance:	Retains a minimum of 50% of tensile strength after 30 day exposure to 3% H ₂ SO ₄ , .2N NaOH, NH ₃ , 90% Alcohol, Kerosene, 10% Igepal.
Fungus Resistance:	ASTM G21 Zero Rating Per GR 3126 Requirement
Crush Resistance:	300 lbs. per GR3126 Requirement
UOM:	Raceway: Feet Fittings: 10 Pack
Warranty:	1 Year Defects In Workmanship
Safety Standards:	UL 2024:2014 Ed. 5 and CSA C22.2 #262:2004 Ed. 1 Optical Fiber Cable and Communication Cable Raceway Systems (Select Colors)

Ordering

Square Exterior Plastic Raceway System	
Multilink Part Number	Description
MRC17-E	Molding Exterior Plastic 1 3/4" x 1"
MRF17-OCR-E	Corner Outside For Molding Exterior Plastic 1 3/4" x 1"
MRF17-ICR-E	Corner Inside For Molding Exterior Plastic 1 3/4" x 1"
MRF17-FER-E	Corner Right Angle For Molding Exterior Plastic 1 3/4" x 1"
MRF17-JC-E	Seam Cover/Floors For Molding Exterior Plastic 1 3/4" x 1"
MRC12-E	Molding Exterior Plastic 1 1/4" x 3/4" For MDU
MRF12-OCR-E	Corner Outside For Molding Exterior Plastic 1 1/4" x 3/4"
MRF12-ICR-E	Corner Inside For Molding Exterior Plastic 1 1/4" x 3/4"
MRF12-FER-E	Corner Right Angle For Molding Exterior Plastic 1 1/4" x 3/4"
MRF12-JC-E	Seam Covers/Floors For Molding Exterior Plastic 1 1/4" x 3/4"

MRC/MRF12 Fittings



MRC12-E-IV



MRF12-JC-E-IV



MRF12-EC-E-IV



MRF12-FER-E-IV



MRF12-ICR-E-IV

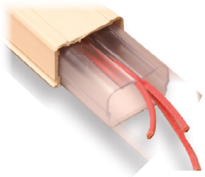


MRF12-OCR-E-IV



MRF12-TRT-E-IV

MRC/MRF17 Fittings



MRC17-E-IV



MRF17-JC-E-IV



MRF17-EC-E-IV



MRF17-FER-E-IV



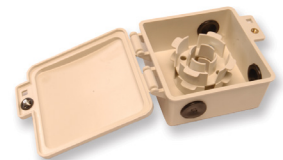
MRF17-ICR-E-IV



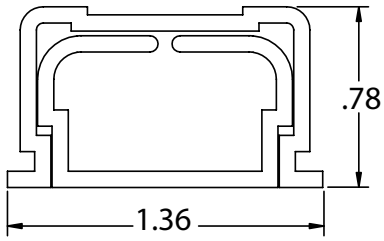
MRF17-OCR-E-IV



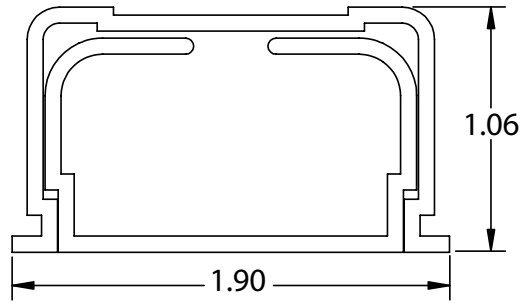
MRF17-TRT-E-IV



MRS-6TB



MRC12



MRC17



Scan QR for website.

Multilink, Inc
580 Ternes Ln
Elyria, OH 44035
Tel: (440) 366-6966
Fax: (440) 366-6802



facebook.com/GoMultilink1



twitter.com/GoMultilink



youtube.com/GoMultilink

North America	Europe, Middle East & Africa	Latin & South America
Tel: +1 440 366 6966 Fax: +1 440 366 6802 Email: engsupport@gomultilink.com	Tel: +1 440 366 6966 Fax: +1 440 366 6802 Email: engsupport@gomultilink.com	Tel: +1 440 366 6966 Mobile: +1 440 366 6802 Email: lasupport@gomultilink.com

Contact Us