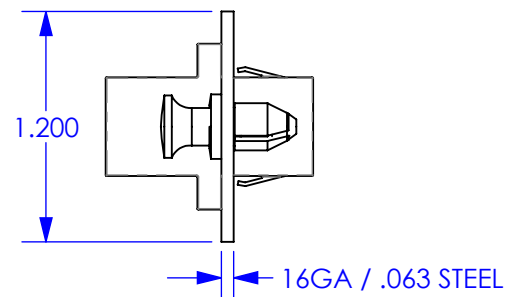
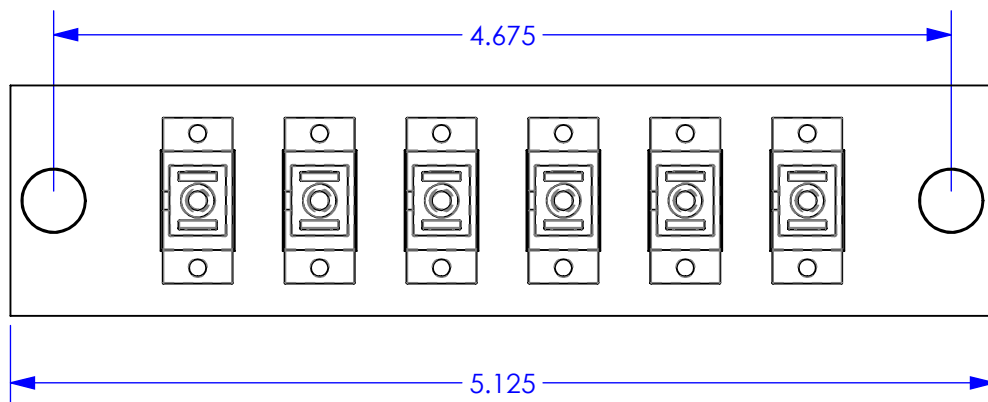
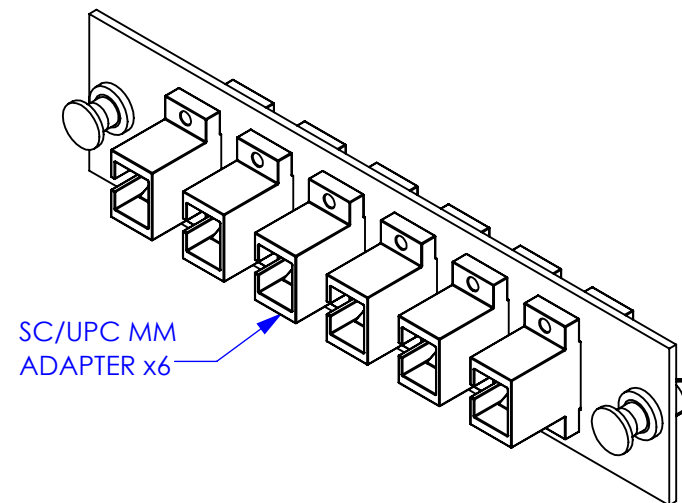
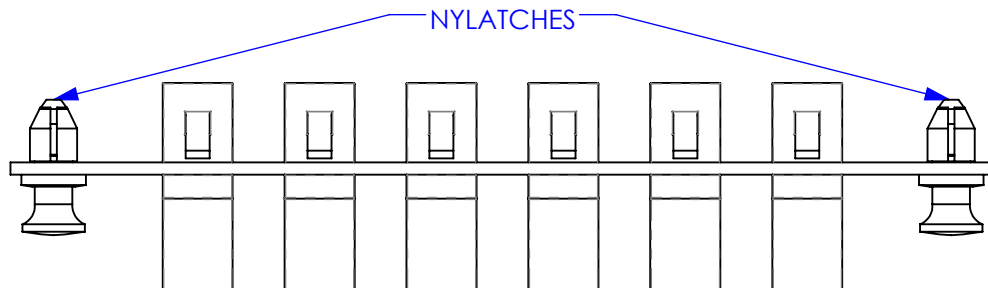


REV	ECN#	DESCRIPTION OF CHANGE	DATE	BY	MFG ENG
01	N/A	INITIAL RELEASE		SK	



UNLESS OTHERWISE SPECIFIED DIMENSIONS ARE IN INCHES
 TOLERANCES ARE:
 FRACTIONS DECIMALS ANGLES
 ±1/32 .XX=±.03 ±1°
 .XXX=±.010

ALL FLATS TO BE ±.005

NO SHARP EDGES OR BURRS ALLOWED

MATERIAL: SEE B.O.M.

FINISH: BLACK TEXT UX-511-N31

DO NOT SCALE DRAWING

THIS DOCUMENT AND THE INFORMATION CONTAINED THEREIN ARE CONFIDENTIAL & PROPRIETARY TO MULTILINK AND MAY NOT BE COPIED OR DISCLOSED TO OTHERS WITHOUT A WRITTEN CONSENT FROM MULTILINK. THE INFORMATION IS TO BE PROMPTLY RETURNED TO MULTILINK UPON REQUEST.

DRAWN BY: SK DATE: 01/20/06

CHECKED: DATE:

MFG ENG: DATE:

QUALITY ENG: DATE:

Multilink

MSC-06-MM-P-BLK LOADED
 SC MM PHOS BRONZE
 6 PACK PANEL

SIZE DWG. NO. **A** 10-9995REF REV. 01

SCALE: 1:1 CAD FILE: 10-9995REF SHEET 1 OF 1