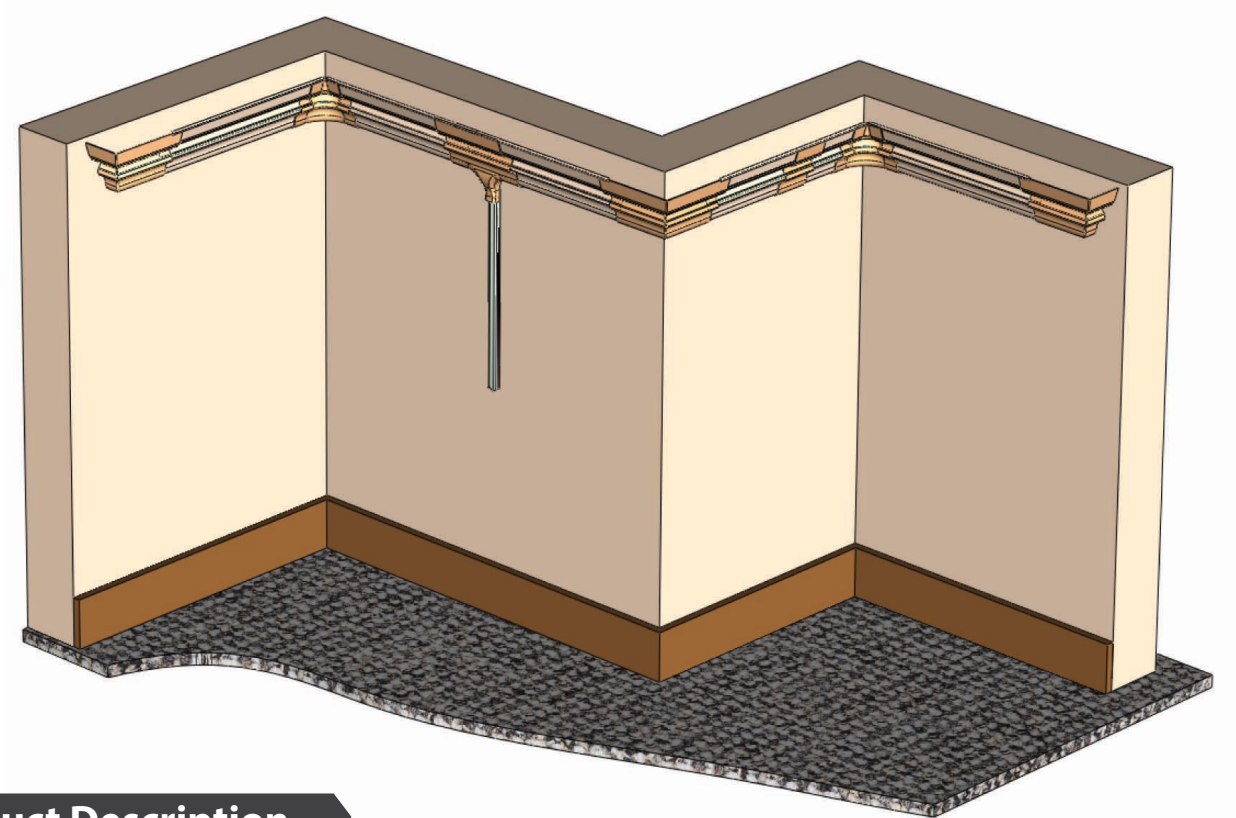


Hinged Overlay Raceway System

Interior



Product Description

Multilink Hinged Overlay Molding Raceway System is a 2 piece design with a base and cover. The molding can be used to route and protect cabling for low voltage data, voice, video, and fiber optic applications. Fittings are available for routing direction changes, extensions, and termination of the molding. All fittings incorporate a 1" minimum bend radius as recommended for fiber optic cables. The molding is manufactured using a special purpose profile extrusion alloy resin and the fittings are manufactured using an injection grade resin. The product is easily painted with latex paint.

General Specifications

Material:	Raceway: Special Purpose Profile Extrusion Alloy Rigid PolyVinyl Chloride Fittings: Impact Modified Flame Retardant Polybutylene Terephthalate
Color:	Ivory, White, Linen White
Operating Temp. Range:	-18°C to 58°C (0°F to 136°F)
Installation Temp. Range:	-18°C to 45°C (0°F to 113°F)
Impact Resistance:	2.5 ft. lbs. referencing TR1334 section 5.4
Chemical Resistance:	Retains a minimum of 50% of tensile strength after 30 day exposure to 3% H2SO4, .2N NaOH, NH3, 90% Alcohol, Kerosene, 10% Igepal.
Fungus Resistance:	ASTM G21 Zero Rating Per GR 3126 Requirement
Crush Resistance:	300 lbs. per GR3126 Requirement
UV Resistance:	ASTM 155 1000 hour exposure per GR3126 requirement
UOM:	Raceway: Feet Fittings: 10 Pack
Warranty:	1 Year Defects In Workmanship
Safety Standard:	UL 2024:2014 Ed. 5 and CSA C22.2 #262:2004 Ed. 1 Optical Fiber Cable and Communication Cable Raceway Systems (Select Colors)

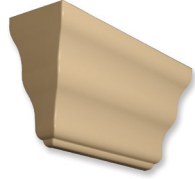
Ordering

Hinged Overlay Raceway System	
Multilink Part Number	Description
MRWH15-*	Hinged Cover Molding Cover & Base, 8ft, 2 Piece System
MRWH15-EC-L-*	Hinged Overlay, Left End Cap
MRWH15-EC-R-*	Hinged Overlay, Right End Cap
MRWH15-ICR-*	Hinged Overlay, Inside Corner
MRWH15-OCR-*	Hinged Overlay, Outside Corner
MRWH15-TRT-*	Hinged Overlay, T-Fitting
MRWH15-SC-*	Hinged Overlay, Seam Cover
MRM-75-*	Pre-Adhesive Backed Latch Duct Raceway

Fittings



MRWH15



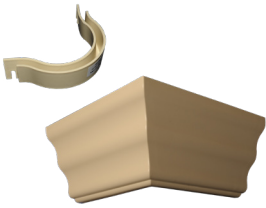
MRWH15-EC-L



MRWH15-EC-R



MRWH15-ICR



MRWH15-OCR



MRWH15-TRT



MRWH15-SC

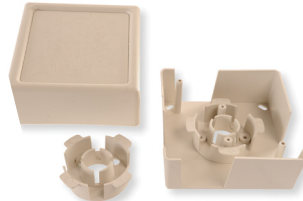
MRM75 Fittings



MRM-75



MRM75-DCW



MRS-3TB



MRF75-JC



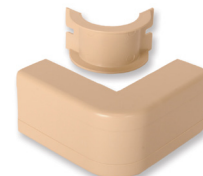
MRF75-EC



MRF75-FER



MRF75-ICR



MRF75-OCR



MRF75-TRT

