

Latch Duct Raceway System

Interior



Product Description

Multilinks Latch Duct Interior Plastic Raceway System is a 1 piece design that hinges open for installation access. The molding can be used to route and protect cabling for low voltage data, voice, video, and fiber optic applications. Fittings are available for routing direction changes, extending, and terminating the molding. All bases incorporate a 1" minimum bend radius as recommended for fiber optic cables. The molding is manufactured using a special purpose profile extrusion alloy resin and the fittings are manufactured using an injection grade resin. The product can be painted with latex paint.

General Specifications

Material:	Raceway: Special Purpose Profile Extrusion Alloy Rigid PolyVinyl Chloride Fittings: Impact Modified Flame Retardant Polybutylene Terephthalate
Color:	Interior Ivory, Linen White
Operating Temp. Range:	-18°C to 58°C (0°F to 136°F)
Installation Temp. Range:	-18°C to 45°C (0°F to 113°F)
Chemical Resistance:	Retains a minimum of 50% of tensile strength after 30 day exposure to 3% H ₂ SO ₄ , .2N NaOH, NH ₃ , 90% Alcohol, Kerosene, 10% Igepal.
Fungus Resistance:	ASTM G21 Zero Rating Per GR 3126 Requirement
Crush Resistance:	300 lbs. per GR3126 Requirement
UOM:	Raceway: Feet Fittings: 10 Pack
Warranty:	1 Year Defects In Workmanship
Safety Standard:	UL 2024:2014 Ed. 5 and CSA C22.2 #262:2004 Ed. 1 Optical Fiber Cable and Communication Cable Raceway Systems (Select Colors)

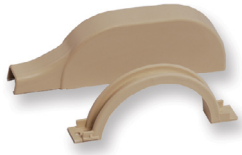
Ordering

Latch Duct Interior Plastic Raceway System	
Multilink Part Number	Description
MRM17	Molding Square Plastic 1 3/4" x 1"
MRF17-OCR	Corner Outside For Square Molding 1 3/4" x 1"
MRF17-ICR	Corner Inside For Square Molding 1 3/4" x 1"
MRF17-FER	Corner Right Angle For Square Molding 1 3/4" x 1"
MRF17-EC	End Cap For Square Molding 1 3/4" x 1"
MRF17-JC	Seam Covers For Square Molding 1 3/4" x 1"
MRF12-R7	Reducer Fitting For Square Molding 1 3/4" to 3/4"
MRM17-TRT	T Fitting For Square Molding 1 3/4" x 1"
MRM-75	Molding Square Latch Duct Raceway 3/4" x 1/2"
MRS-3TB	Box Storage Inside Living Unit Connector
84126-VWR	Drop Cable Wall Entry Hoof - Base
MRM75-DCW	Drop Cable Wall Entry Hoof - Base

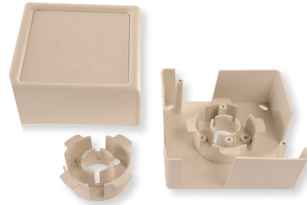
MRM75 Fittings



MRM-75



MRM75-DCW



MRS-3TB



MRF75-JC



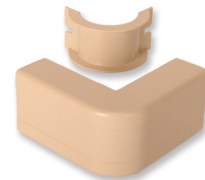
MRF75-EC



MRF75-FER



MRF75-ICR

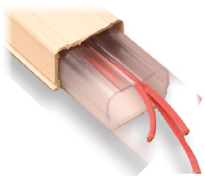


MRF75-OCR



MRF75-TRT

MRM12 & 17 Fittings



MRC12-E-IV
MRC17-E-IV



MRF12-JC-E-IV
MRF17-JC-E-IV



MRF12-EC-E-IV
MRF17-EC-E-IV



MRF12-FER-E-IV
MRF17-FER-E-IV



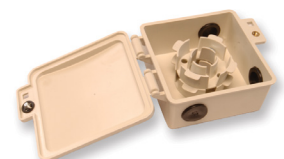
MRF12-ICR-E-IV
MRF17-ICR-E-IV



MRF12-OCR-E-IV
MRF17-OCR-E-IV



MRF12-TRT-E-IV
MRF17-TRT-E-IV



MRS-6TB
MRS-6TB

Multilink®

Simply More...



Scan QR for website.

Multilink, Inc
580 Ternes Ln
Elyria, OH 44035
Tel: (440) 366-6966
Fax: (440) 366-6802



facebook.com/GoMultilink1



twitter.com/GoMultilink



youtube.com/GoMultilink

North America	Europe, Middle East & Africa	Latin & South America
Tel: +1 440 366 6966 Fax: +1 440 366 6802 Email: engsupport@gomultilink.com	Tel: +1 440 366 6966 Fax: +1 440 366 6802 Email: engsupport@gomultilink.com	Tel: +1 440 366 6966 Mobile: +1 440 366 6802 Email: lasupport@gomultilink.com

Contact Us