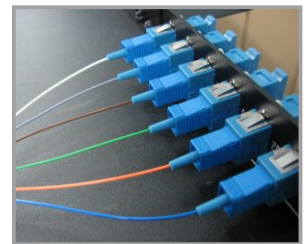
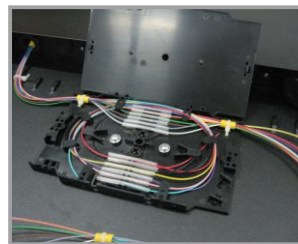
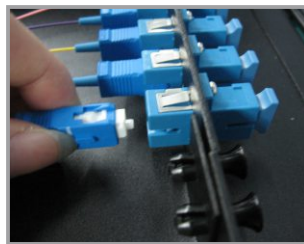




**WC-1U3P**

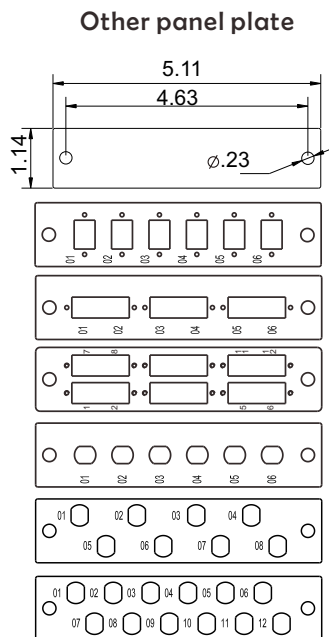
## Features

- Available for IEC19"/23" & ETSI standard.
- Max capacity is 72 "Fibers" by using 3 adapter panels of 6 ports LC Quad;  
Max capacity is 36 "Fibers" by using 3 adapter panels of 6 ports SC Duplex;  
Max capacity is 36 "Fibers" by using 3 adapter panels of 12 ports ST/FC.
- RAL7035 or RAL9005, and RoHS compliant.
- Inner box : 20.87\*16.34\*2.13 inches;  
Gross weight : 12.1 lbs.
- Four boxes in a carton : 21.46\*16.93\*9.06 inches;  
Gross weight : 49.85 lbs.



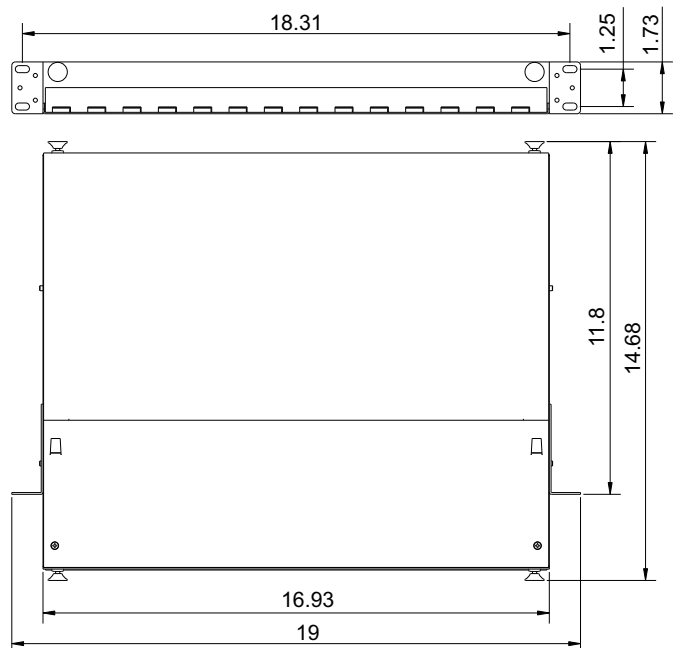
## Application

Dimension For Body and Panel

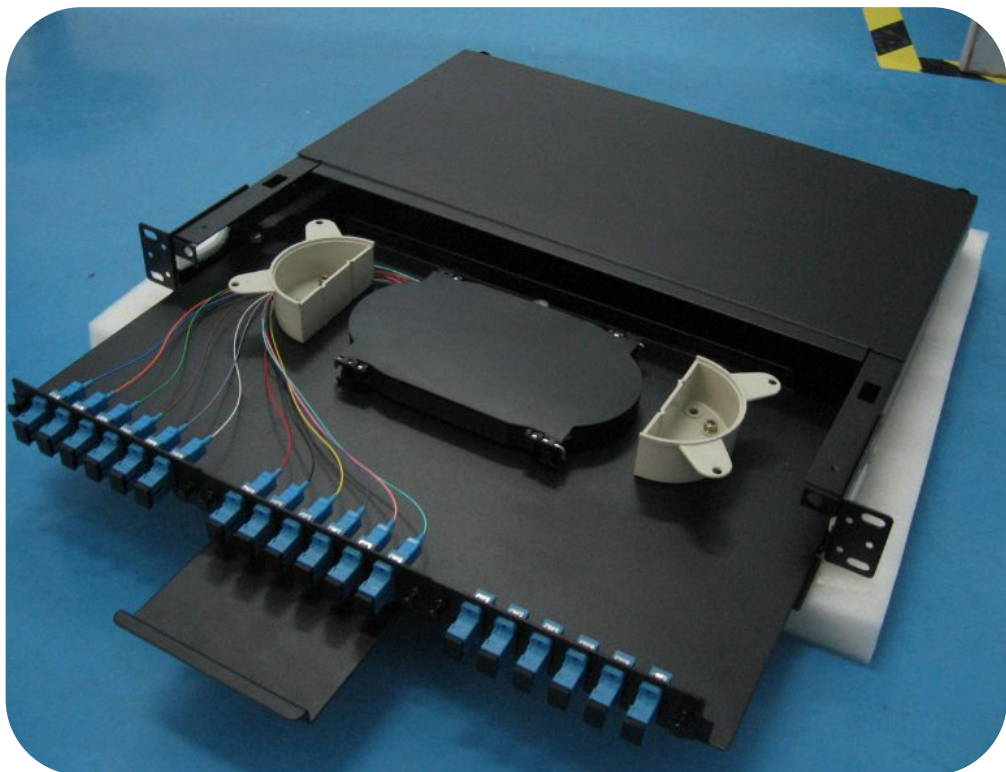
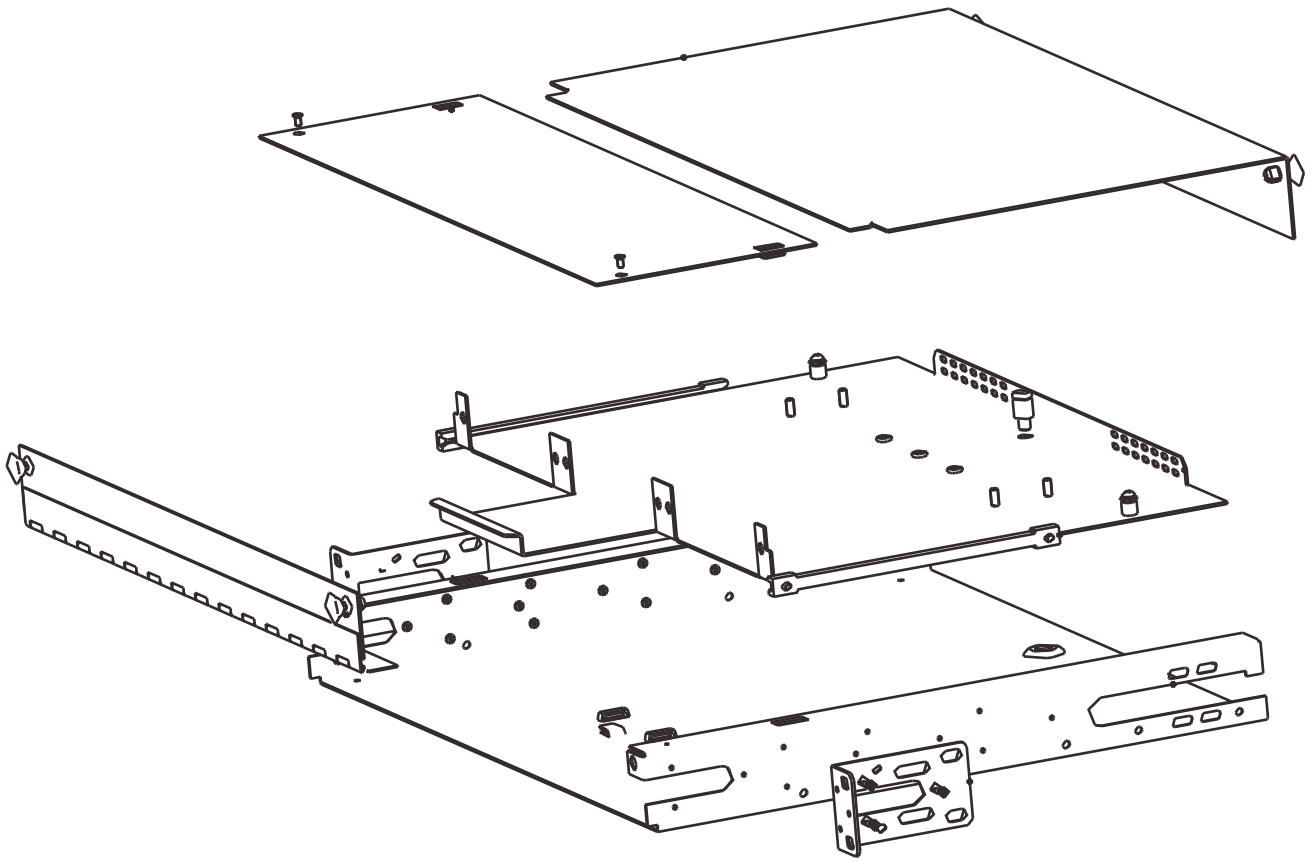


Machine performance

- Dimension



# Assembly



## Included Accessories



Mounting screws M6



Cable spool



Cross recess head screw  
M4×8mm (for tray)



Radiation sticker



4" plastic tie wraps



M4 Nut/ Plain washer/Spring  
washer(for cable spool)

PORT IDENTIFICATION					
1	2	3	4	5	6
7	8	9	10	11	12

Port identification labels



2" cable managers with adhesive bottom

### STANDARD CONFIGURATION

WC-1U3P	
Description	Number
Mounting screws M6	4
4" plastic tie wraps	4
Radiation sticker	1
2" cable managers with adhesive bottom	4
Port identification labels	3
Cross recess head screw M4×8mm (for tray)	2
Cable spool	2
M4 Nut/ Plain washer/Spring washer(for cable spool)	4