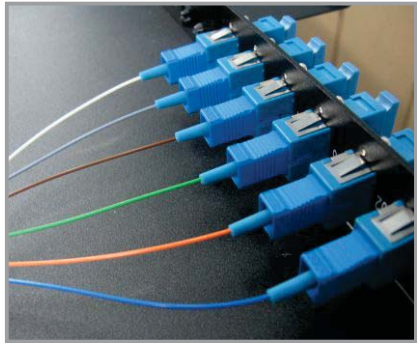
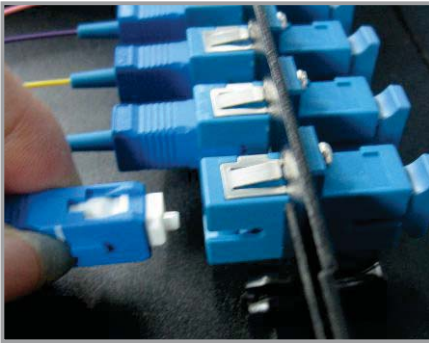
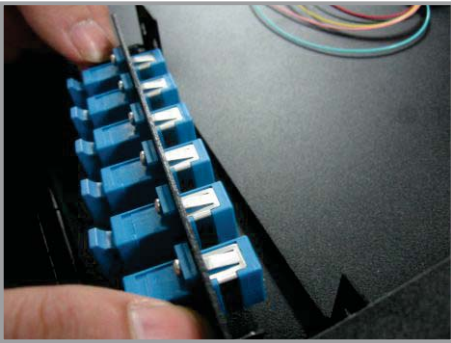




# WC-WM04P

## Features

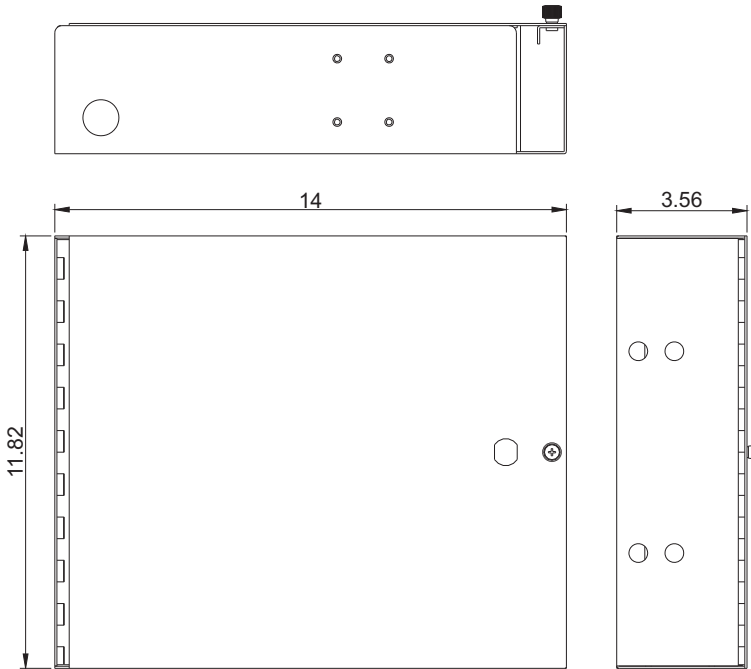
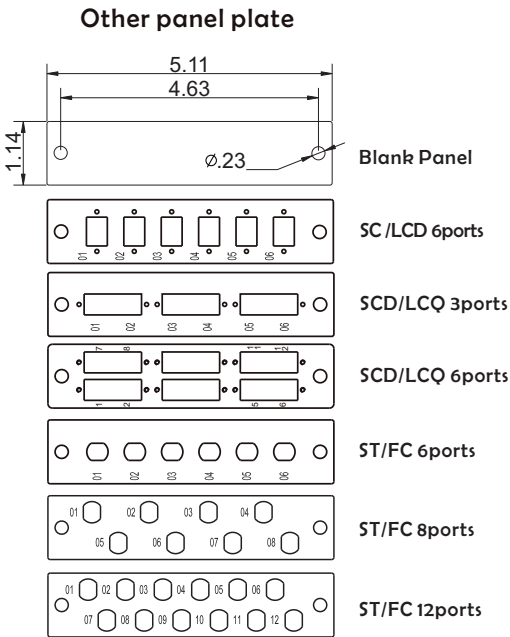
- Max capacity is 96 "Fibers" by using 4 adapter panels of 6 ports LC Quad;
- Max capacity is 48 "Fibers" by using 4 adapter panels of 6 ports SC Duplex;
- Max capacity is 48 "Fibers" by using 4 adapter panels of 12 ports ST/FC.
- RAL7035 or RAL9005, and RoHS compliant.
- One unit per package which is in 16.15\*13.98\*5.91 inches.
- Weight is 10.1 lbs after packaged.



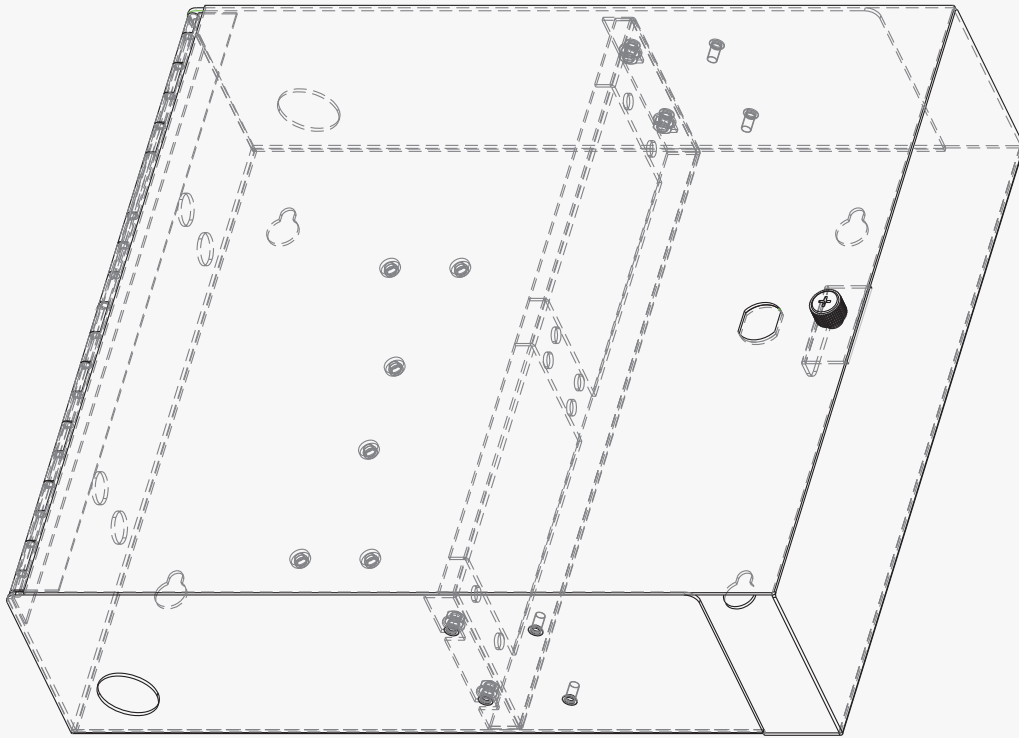
## Application

Dimension For Body and Panel

Machine performance  
• Dimension



# Assembly



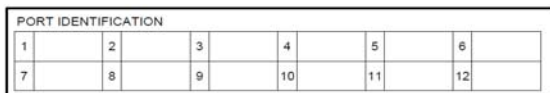
## Included Accessories



Radiation sticker



4" plastic tie wraps



Port identification labels



2" cable managers with adhesive bottom

### STANDARD CONFIGURATION

#### WC-WM04P

Description	Number
4" plastic tie wraps	4
Radiation sticker	1
2" cable managers with adhesive bottom	4
Port identification labels	4