

# D43530-000 | FOSC400-A8-NT-0-NNV



FOSC® 400 A8 Fiber Optic Splice Closure, Heat Shrink Cable sealing, no pre-installed trays, with test valve

- Single-ended, O-ring sealed dome closure for splicing feeder and distribution cables
- Compatible with most common cable types: e.g. loose tube, central core, ribbon fiber
- FOSC splice trays hinged for access to any splice without disturbing other trays
- Closure can be used in aerial, pedestal and underground (up to 5 meters) environments
- Compatible with CommScope's CWDM modules and optical splitter trays

## Product Classification

|                              |                                   |
|------------------------------|-----------------------------------|
| <b>Regional Availability</b> | Latin America   North America     |
| <b>Product Type</b>          | Single-ended, round fiber closure |
| <b>Product Brand</b>         | FOSC®                             |
| <b>Product Series</b>        | FOSC 400                          |

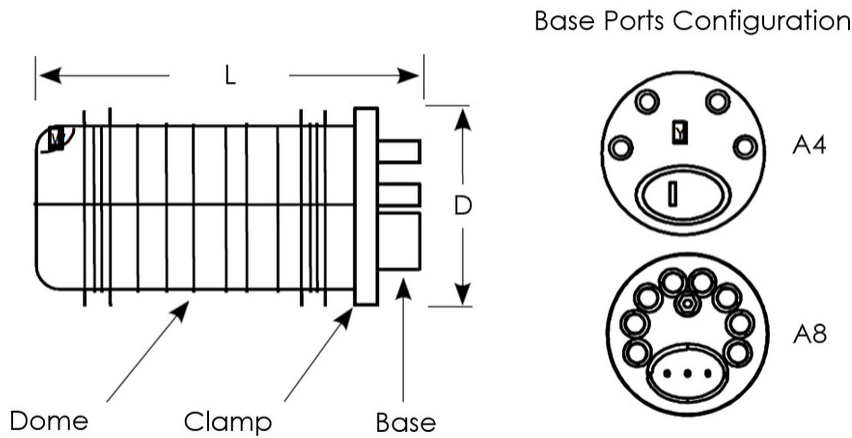
## General Specifications

|   |  |
|---|--|
| <b>Cable Blocking Components</b>                            | None                                   |
| <b>Cable Entry Drop Port Style</b>                          | Round                                  |
| <b>Cable Entry Main Port Style</b>                          | Oval                                   |
| <b>Cable Ports Quantity, total</b>                          | 1 oval port (2 cables) + 8 round ports |
| <b>Cable Sealing Type</b>                                   | Heat shrink                            |
| <b>Closure Sealing Type</b>                                 | Dome-to-base clamp with O-ring         |
| <b>Closure Style</b>  | Single-ended                           |
| <b>Color</b>  | Black                                  |
| <b>Flash Test Valve</b>                                     | Pre-installed                          |
| <b>Ground Feed-through</b>                                  | None                                   |
| <b>Mounting</b>   | Pole   Strand   Wall                   |
| <b>Network Area Type</b>                                    | Feeder                                 |
| <b>Splice Tray Included, quantity</b>                       | 0                                      |
| <b>Splice Tray Type Included</b>                            | No trays                               |
| <b>Splicing Capacity, Mass Fusion, maximum</b>              | 144                                    |
| <b>Splicing Capacity, Single Fusion, maximum</b>            | 96                                     |
| <b>Splicing Capacity, Single Splice, 12 fibers, maximum</b> | 96                                     |

# D43530-000 | FOSC400-A8-NT-0-NNV

|  |                    |
|--|--------------------|
| <b>Splicing Capacity, Single Splice, 6 fibers, maximum</b> | 48                 |
| <b>Splicing Type, Supported</b>                            | Single fusion      |
| <b>Dimensions</b>  |                    |
| <b>Length</b>  | 420 mm   16.535 in |
| <b>Diameter</b>  | 150 mm   5.906 in  |
| <b>Diameter, with clamp</b>                                | 180 mm   7.087 in  |
| <b>Main Cable Diameter, maximum</b>                        | 25 mm   0.984 in   |

## Dimension Drawing



## Ordering Tree

# D43530-000 | FOSC400-A8-NT-0-NNV

## FOSC 400-XX-XX-X-XXX

### Closure Size (inches)

|   |                       |
|---|-----------------------|
| A | 8 dia. x 19 1/2 long  |
| B | 8 dia. x 25 long      |
| C | 11 1/2 dia. x 23 long |
| D | 11 1/2 dia. x 31 long |

### Cable Entry Ports (in addition to oval port)

All closures include an oval port for pass through cables

|   |                      |
|---|----------------------|
| 2 | B closure only       |
| 4 | A and B closure only |
| 5 | C and D closure only |
| 8 | A closure only       |

### Capacity (or type) of Splice Tray

|     |  |
|-----|--|
| 12  | A, B, or C tray w/two SM6 splice modules                   |
| 24* | A, B or C tray w/two SM12 splice modules                   |
| 36  | D tray with six SM6 splice modules                         |
| 72* | D tray with six SM12 splice modules                        |
| R1  | A, B size ribbon tray (accommodates 12 ribbons/144 fibers) |
| R2  | D size ribbon tray (24 ribbons/288 fibers)                 |
| R3  | C size ribbon tray (18 ribbons/216 fibers)                 |
| NT  | No Trays   |

\*Note: SMOUV (1120-01-US) splice protection sleeves should be used with SM12 splice modules.

### Valve for Flash Test

|   |          |
|---|----------|
| V | Valve    |
| N | No Valve |

### Ground Feed-through Lugs

|   |           |
|---|-----------|
| G | Grounding |
| N | None      |

### Cable Blocking Components

|   |          |
|---|----------|
| B | Blocking |
| N | None     |

### Number of Splice Trays

|                    |
|--------------------|
| 0 or 1 is standard |
|--------------------|

## Material Specifications

### Material Type

Impact-resistant polymer

## Environmental Specifications

### Environmental Space

Below ground | Buried

### Qualification Standards

IEC 61300, 6 m waterhead

### Water Resistance

Flash test valve at 5 psi (40 kPa)

## Packaging and Weights

### Packaging quantity

1

### Packaging Type

Box | Carton

### Weight, net

2.4 kg | 5.291 lb

## Regulatory Compliance/Certifications

### Agency

### Classification

CHINA-ROHS

Below maximum concentration value

ISO 9001:2015

Designed, manufactured and/or distributed under this quality management system

# D43530-000 | FOSC400-A8-NT-0-NNV

---

REACH-SVHC

Compliant as per SVHC revision on [www.commscope.com/ProductCompliance](http://www.commscope.com/ProductCompliance)

ROHS

Compliant

UK-ROHS

Compliant

