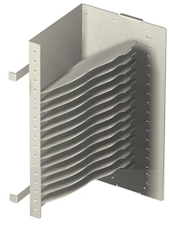


# MX6-12SPNL-L

---



OMX Fiber Splice Block, unloaded, for 12 splice wheels, left sided, putty white

## OBSOLETE

This product was discontinued on: December 30, 2018

## Product Classification

<b>Regional Availability</b>	EMEA   Latin America   North America
<b>Product Type</b>	Fiber splice block
<b>Product Brand</b>	OMX600®
<b>Product Series</b>	OMX

## General Specifications

<b>Functionality</b>	Splicing
<b>Application</b>	Used in OMX-style frames only
<b>Body Style</b>	Left orientation
<b>Cable Exit Location</b>	Side
<b>Color</b>	Putty white
<b>Color, front</b>	Putty white
<b>Growth Configuration</b>	Unloaded
<b>Interface, front</b>	Unloaded
<b>Patching Capacity, maximum</b>	0
<b>Rack Type</b>	OMX
<b>Splicing Capacity, maximum</b>	144

## Material Specifications

<b>Finish</b>	Powder coated
<b>Material Type</b>	Steel

# MX6-12SPNL-L

---

## Packaging and Weights

**Packaging quantity** 1

## Regulatory Compliance/Certifications

<b>Agency</b>	<b>Classification</b>
CHINA-ROHS	Below maximum concentration value
REACH-SVHC	Compliant as per SVHC revision on <a href="http://www.commscope.com/ProductCompliance">www.commscope.com/ProductCompliance</a>
ROHS	Compliant
UK-ROHS	Compliant

