



FOSC® 400 A4 Fiber Optic Splice Closure, Heat Shrink Cable sealing, one pre-installed 12-splice tray, cable blocking, ground feedthrough lugs, with test valve

- Single-ended, O-ring sealed dome closure for splicing feeder and distribution cables
- Compatible with most common cable types: e.g. loose tube, central core, ribbon fiber
- FOSC splice trays hinged for access to any splice without disturbing other trays
- Closure can be used in aerial, pedestal and underground (up to 5 meters) environments
- Compatible with CommScope's CWDM modules and optical splitter trays

## Product Classification

<b>Regional Availability</b>	Latin America   North America
<b>Product Type</b>	Single-ended, round fiber closure
<b>Product Brand</b>	FOSC®
<b>Product Series</b>	FOSC 400

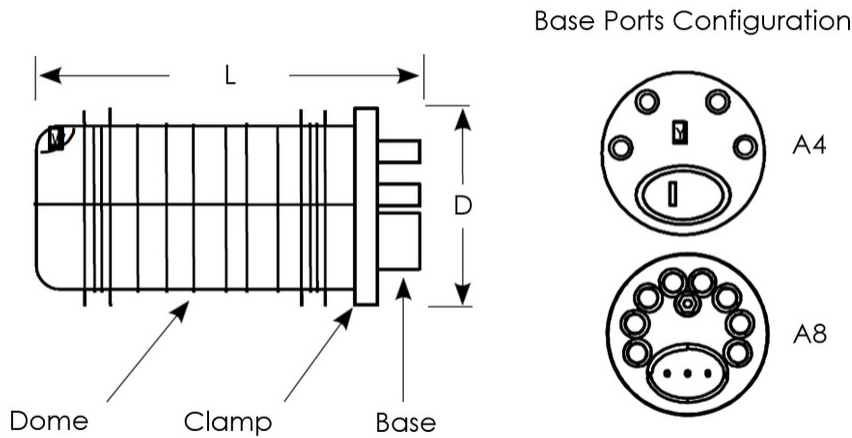
## General Specifications

<b>Cable Blocking Components</b>	Included
<b>Cable Entry Drop Port Style</b>	Round
<b>Cable Entry Main Port Style</b>	Oval
<b>Cable Ports Quantity, total</b>	1 oval port (2 cables) + 4 round ports
<b>Cable Sealing Type</b>	Heat shrink
<b>Closure Sealing Type</b>	Dome-to-base clamp with O-ring
<b>Closure Style</b>	Single-ended
<b>Color</b>	Black
<b>Flash Test Valve</b>	Pre-installed
<b>Ground Feed-through</b>	Included
<b>Mounting</b>	Pole   Strand   Wall
<b>Network Area Type</b>	Feeder
<b>Splice Tray Included, quantity</b>	1
<b>Splice Tray Type Included</b>	12-way, heat shrink
<b>Splicing Capacity, Single Fusion, maximum</b>	48
<b>Splicing Capacity, Single Splice, 12 fibers, maximum</b>	48

# 324067-000 | FOSC400-A4-12-1-BGV

<b>Splicing Capacity, Single Splice, 6 fibers, maximum</b>	24
<b>Splicing Type, Supported</b>	Single fusion
<b>Dimensions</b>	
<b>Length</b>	420 mm   16.535 in
<b>Diameter</b>	150 mm   5.906 in
<b>Diameter, with clamp</b>	180 mm   7.087 in
<b>Main Cable Diameter, maximum</b>	25 mm   0.984 in

## Dimension Drawing



## Ordering Tree

# 324067-000 | FOSC400-A4-12-1-BGV

## FOSC 400-XX-XX-X-XXX

### Closure Size (inches)

A	8 dia. x 19 1/2 long
B	8 dia. x 25 long
C	11 1/2 dia. x 23 long
D	11 1/2 dia. x 31 long

### Cable Entry Ports (in addition to oval port)

All closures include an oval port for pass through cables

2	B closure only
4	A and B closure only
5	C and D closure only
8	A closure only

### Capacity (or type) of Splice Tray

12	A, B, or C tray w/two SM6 splice modules
24*	A, B or C tray w/two SM12 splice modules
36	D tray with six SM6 splice modules
72*	D tray with six SM12 splice modules
R1	A, B size ribbon tray (accommodates 12 ribbons/144 fibers)
R2	D size ribbon tray (24 ribbons/288 fibers)
R3	C size ribbon tray (18 ribbons/216 fibers)
NT	No Trays

\*Note: SMOUV (1120-01-US) splice protection sleeves should be used with SM12 splice modules.

### Valve for Flash Test

V	Valve
N	No Valve

### Ground Feed-through Lugs

G	Grounding
N	None

### Cable Blocking Components

B	Blocking
N	None

### Number of Splice Trays

0 or 1 is standard
--------------------

## Material Specifications

### Material Type

Impact-resistant polymer

## Environmental Specifications

### Environmental Space

Below ground | Buried

### Qualification Standards

IEC 61300, 6 m waterhead

### Water Resistance

Flash test valve at 5 psi (40 kPa)

## Packaging and Weights

### Included

Cable blocking components

### Packaging quantity

1

### Packaging Type

Box | Carton

### Weight, net

1.9 kg | 4.189 lb

## Regulatory Compliance/Certifications

### Agency

CHINA-ROHS

### Classification

Below maximum concentration value

# 324067-000 | FOSC400-A4-12-1-BGV

---

ISO 9001:2015	Designed, manufactured and/or distributed under this quality management system
REACH-SVHC	Compliant as per SVHC revision on <a href="http://www.commscope.com/ProductCompliance">www.commscope.com/ProductCompliance</a>
ROHS	Compliant
UK-ROHS	Compliant

