



FOSC® 400 A4 Fiber Optic Splice Closure, Heat Shrink Cable sealing, one pre-installed 24-splice tray, ground feedthrough lugs, with test valve

- Single-ended, O-ring sealed dome closure for splicing feeder and distribution cables
- Compatible with most common cable types: e.g. loose tube, central core, ribbon fiber
- FOSC splice trays hinged for access to any splice without disturbing other trays
- Closure can be used in aerial, pedestal and underground (up to 5 meters) environments
- Compatible with CommScope's CWDM modules and optical splitter trays

## Product Classification

<b>Regional Availability</b>	Asia   EMEA
<b>Product Type</b>	Single-ended, round fiber closure
<b>Product Brand</b>	FOSC®
<b>Product Series</b>	FOSC 400

## General Specifications

<b>Cable Blocking Components</b>	None
<b>Cable Entry Drop Port Style</b>	Round
<b>Cable Entry Main Port Style</b>	Oval
<b>Cable Ports Quantity, total</b>	1 oval port (2 cables) + 4 round ports
<b>Cable Sealing Type</b>	Heat shrink
<b>Closure Sealing Type</b>	Dome-to-base clamp with O-ring
<b>Closure Style</b>	Single-ended
<b>Color</b>	Black
<b>Flash Test Valve</b>	Pre-installed
<b>Ground Feed-through</b>	Included
<b>Mounting</b>	Pole   Strand   Wall
<b>Network Area Type</b>	Feeder
<b>Splice Tray Included, quantity</b>	1
<b>Splice Tray Type Included</b>	24-way, heat shrink
<b>Splicing Capacity, Single Fusion, maximum</b>	48
<b>Splicing Capacity, Single Splice, 12 fibers, maximum</b>	48
<b>Splicing Capacity, Single Splice, 6 fibers, maximum</b>	24

# 813570-000 | FOSC-400A4-S24-1-NGV

**Splicing Type, Supported**

Single fusion

## Dimensions

**Length**

420 mm | 16.535 in

**Diameter**

150 mm | 5.906 in

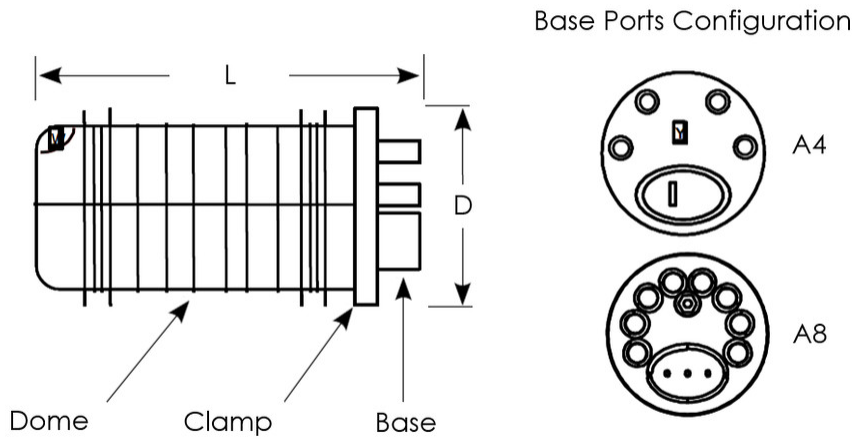
**Diameter, with clamp**

180 mm | 7.087 in

**Main Cable Diameter, maximum**

25 mm | 0.984 in

## Dimension Drawing



## Ordering Tree

# 813570-000 | FOSC-400A4-S24-1-NGV

FOSC - 400 X - X - X - X X X

**Closure size**

A4	420mm - 4 round ports
B4	540mm - 4 round ports
D5	710mm - 5 round ports
A8	410mm - 8 round ports <sup>14</sup>
A5	420mm - 4 round ports
B2	540mm - 2 round ports
D5/B	505mm - 5 round ports

**Tray type**

NT	No Trays				
<i>Splices in splice protectors at tray exterior</i>					
		A4	AB	B2, B4, D5/B	D5
S12	12 SMOUV splice protectors (45mm)			X	
S24	24 SMOUV splice protectors (45mm)	X	X	X	
A24	24 ANT splice protectors	X	X	X	
4R4	4 splice protectors for ribbon cable with 4 fibers	X	X		
6R4	6 splice protectors for ribbon cable with 4 fibers			X	
<i>Splices stored in modules at tray interior</i>					
		A4	AB	B2, B4, D5/B	D5
12	12 splice protectors (2 modules, 6 splices/module)	X	X	X	
24	24 splice protectors (2 modules, 12 splices/module)	X	X	X	
36	36 splice protectors (6 modules, 6 splices/module)				X
S96	96 SMOUV splice protectors (45mm)				X
L96	96 SMOUV splice protectors (60 mm)				X
A96	96 ANT splice protectors				X
RT24	24 splices for ribbon cable with 12 fibers (4 modules, 6 splices/module)				X

**Flash test valve**

V	Pre-installed flash test valve
N	No flash test valve

**Ground feedthrough**

G	Pre-installed ground feedthrough
N	No ground feedthrough

**Moisture cable blocking**

N	No blocking
B	Blocking

**Number of splice trays**

0	No trays
<i>Closure size</i>	
1...3	A4
1...4/8	A8 <sup>14</sup>
1...6	B <sup>14</sup>
1...12	D5/B <sup>14</sup>
1...8	D5 <sup>14</sup>

<sup>14</sup> AB closure can accept a mix of standard and slim trays; please contact your local sales representative.

<sup>14</sup> Maximum 8 trays in case of S6 or A6 tray type

<sup>14</sup> B closure can initially be fitted with trays; however, retrofitting a standard "B" closure (delivered with 4 trays or fewer) with a 5th and 6th tray is not possible. The B closure can be ordered with up to 5 trays pre-installed and capacity for later addition of a 6th tray (FOSC-400B4XXX/6..). If 5 or 6 trays are required, a storage basket cannot be used.

<sup>14</sup> If 7 or 8 trays are required, a storage basket cannot be used.

## Material Specifications

**Material Type**

Impact-resistant polymer

## Environmental Specifications

**Environmental Space**

Below ground | Buried

**Qualification Standards**

IEC 61300, 6 m waterhead

**Water Resistance**

Flash test valve at 5 psi (40 kPa)

## Packaging and Weights

**Packaging quantity**

1

**Packaging Type**

Box | Carton

**Weight, net**

1.9 kg | 4.189 lb

## Regulatory Compliance/Certifications

**Agency**

**Classification**

CHINA-ROHS

Below maximum concentration value

ISO 9001:2015

Designed, manufactured and/or distributed under this quality management system

REACH-SVHC

Compliant as per SVHC revision on [www.commscope.com/ProductCompliance](http://www.commscope.com/ProductCompliance)

ROHS

Compliant

UK-ROHS

Compliant

