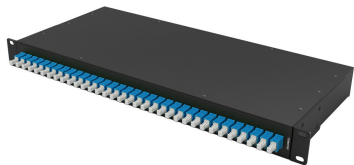


1RU-SP4232001 | 1RU SPLTR PNL 2X32 UPC/SC



1RU panel, 2X32 split ratio, 1 splitter, SC/UPC connectors

- *Product complies with the Build America, Buy America Act (BABAA) requirements of the Infrastructure Investment and Jobs Act of 2021 (Pub. L. 117- 58, §§ 70901-70953), or is the subject of a waiver approved by the Secretary of Commerce or designee. Compliance requirements and waiver applicability vary based on government funding program. Check the laws and regulations for your specific program.

Product Classification

Regional Availability	Asia Australia/New Zealand China EMEA India Latin America North America
Product Type	Splitter patch panel
Product Series	1RU
Government Requirements	Build America Buy America (BABA) compliant*

General Specifications

Functionality	Splitting
Technology Type	Planar lightwave circuit (PLC)
Distribution Type	2 x 32 splitter
Interface, Input	SC/UPC
Interface, Output	SC/UPC
Location of Manufacturing	Waived per BABA waiver for BEAD Program
Splitter, quantity	1

Dimensions

Height	43.69 mm 1.72 in
Width	482.6 mm 19 in
Length	199.89 mm 7.87 in

Optical Specifications

Directivity, minimum	55 dB
Polarization Dependent Loss, maximum	0.4 dB
Uniformity, maximum	2.65 dB
Wavelength Range	1260–1650 nm

1RU-SP4232001 | 1RU SPLTR PNL 2X32 UPC/SC

Insertion Loss, Splitter, maximum 18.2 dB

Return Loss, Splitter, minimum 50 dB

Environmental Specifications

Operating Temperature -40 °C to +70 °C (-40 °F to +158 °F)

Relative Humidity 5%–95%, non-condensing

Packaging and Weights

Packaging quantity 1

Regulatory Compliance/Certifications

Agency	Classification
CHINA-ROHS	Below maximum concentration value
REACH-SVHC	Compliant as per SVHC revision on www.commscope.com/ProductCompliance
ROHS	Compliant
UK-ROHS	Compliant

