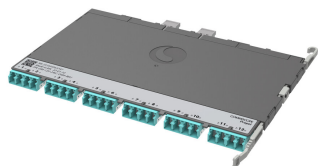


760252346 | PPL-DM-12U-24LC-OM4-BEU



Propel ULL Multimode OM4 MPO-12 Distribution Module, 12 duplex LC to 2X12f MPO/UPC non-pinned, Method B Enhanced

- Ultra-low loss (ULL) with Method B Enhanced polarity
- Can be installed and removed from front or rear of panel
- Serialized QR code provides easy access to factory optical test results
- This component requires 6 of the 12 lanes on the Propel Panel blade

Product Classification

| | |
|------------------------------|---|
| Regional Availability | Asia Australia/New Zealand EMEA Latin America North America |
| Portfolio | SYSTIMAX® |
| Product Type | Fiber module |
| Product Brand | Propel |
| Product Series | PPL |

General Specifications

| | |
|-------------------------------------|---|
| Functionality | Breakout |
| Color, front | Aqua |
| Color, rear | Gray |
| Interface, front | LC/UPC |
| Interface Feature, front | Internal shutters |
| Interface, rear | MPO |
| Interface Feature, rear | Internal shutters Key up/up Standard Unpinned |
| Polarity | Method B Enhanced (ULL) |
| Total Fibers, quantity | 24 |
| Total Ports, quantity, front | 12 |
| Total Ports, quantity, rear | 2 |

Dimensions

| | |
|---------------|-------------------|
| Height | 11 mm 0.433 in |
| Width | 98 mm 3.858 in |
| Depth | 170 mm 6.693 in |

Optical Specifications

760252346 | PPL-DM-12U-24LC-OM4-BEU

| | |
|--------------------------------|---------------------|
| Fiber Mode | Multimode |
| Fiber Type | OM4, LazrSPEED® 550 |
| Insertion Loss, maximum | 0.35 dB |

Environmental Specifications

| | |
|--------------------------------|---------------------------|
| Qualification Standards | IEC 61753-1 TIA-568.3-D |
| Safety Standard | CE CSA UL UL 62368 |

Packaging and Weights

| | |
|---------------------------|---|
| Packaging quantity | 1 |
|---------------------------|---|

Regulatory Compliance/Certifications

| Agency | Classification |
|---------------|-----------------------------------|
| CHINA-ROHS | Below maximum concentration value |
| ROHS | Compliant |
| UK-ROHS | Compliant |

