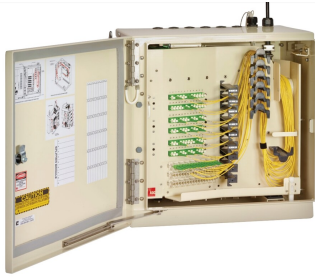


# IFDH

## Base Product



## IFDH 3000 Indoor Fiber Distribution Hub

The Indoor Fiber Distribution Hub (IFDH) is designed to organize and administer fiber optic cables and passive optical splitters in an inside plant environment typically found at the MDU. This cabinet is rack, wall (up to 432f), or pad mountable and used to connect feeder and distribution cables via optical splitters in a Fiber-to-the-Premises (FTTP) network application. The FDH product provides a vital demarcation point for optical transmission signals at the MDU.

While utilizing indoor rated materials like plenum, riser, and indoor/outdoor cable, the IFDH cabinet retains the same vetted benefits found in our outdoor FDH3000 product. This includes front access via a swing frame configuration, grounding, sealed grommet entry, and standard grip clamps for pull out resistance. The IFDH is available in four different cabinet shells supporting 144, 288, 432, and 864 fiber terminations.

### Features and benefits:

- Offers maximized network flexibility facilitating rapid service shifts
- Allows singular testing demarcation point for technician to CO
- Mechanical protection for cables, splice tray, MPO/HMFOC connectors, as well as our full plug-and-play splitter product line, e.g., 1:64, 1x32, dual 1x32, etc.
- Sealed to protect fibers from dust, water spray, insects and other contaminants
- Identification and labeling assure product traceability and ease of identification
- Logical cable management, bend insensitive pigtailed splitter outputs, and routing provides strain relief
- 216-Tool (can wrench), key lock or padlock offers flexible security options
- Rack, wall (up to 432f), or pad mountable
- Tested to NEMA-12 & GR-3123

## Product Classification

<b>Regional Availability</b>	Latin America   North America
<b>Product Type</b>	Fiber distribution hub
<b>Product Series</b>	IFDH 3000
<b>Warranty</b>	One year

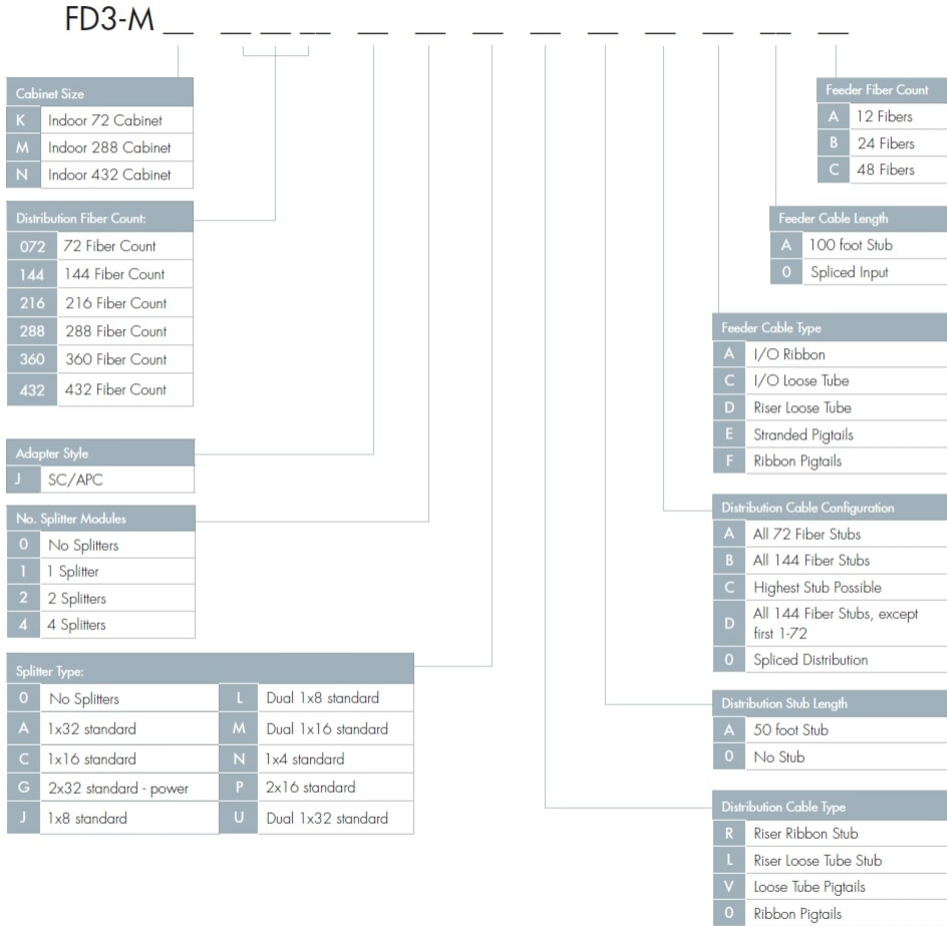
## General Specifications

<b>Functionality</b>	Patching   Splicing   Splitting
<b>Access</b>	Front
<b>Color</b>	Putty white
<b>Front Door Type</b>	Single hinged

# IFDH

**Interface** SC/APC  
**Mounting** Pad | Rack | Wall

## Ordering Tree



## Material Specifications

**Finish** Powder coated  
**Material Type** Aluminum

## Environmental Specifications

**Environmental Space** Indoor

## Packaging and Weights

**Packaging quantity** 1

## \* Footnotes

### **Warranty**

For more information, please consult our Product Warranty guidelines