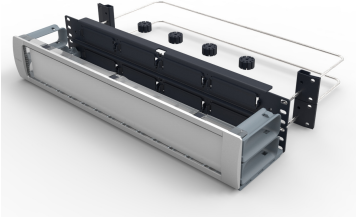


MP-PANELS

Base Product



360MP Fiber Optic Panel series

The SYSTIMAX 360™ MP panels are designed to accept up to sixteen 360 InstaPATCH® Plus modules and a variety of available MPO adapter and blank panels. The panel mounts in a standard 19-inch (483mm) equipment rack or in a 23-inch (584mm) rack and ETSI rack using the 600-23BRKT accessory kit. This product is intended for indoor use or can be used outdoors in a suitable protective enclosure.

The 360™ MP panels are offered in 3 sizes:

- 1RU for holding up to 4 fiber modules
- 2RU for holding up to 8 fiber modules
- 4RU for holding up to 16 fiber modules

Product Classification

Product Type Fiber patch panel