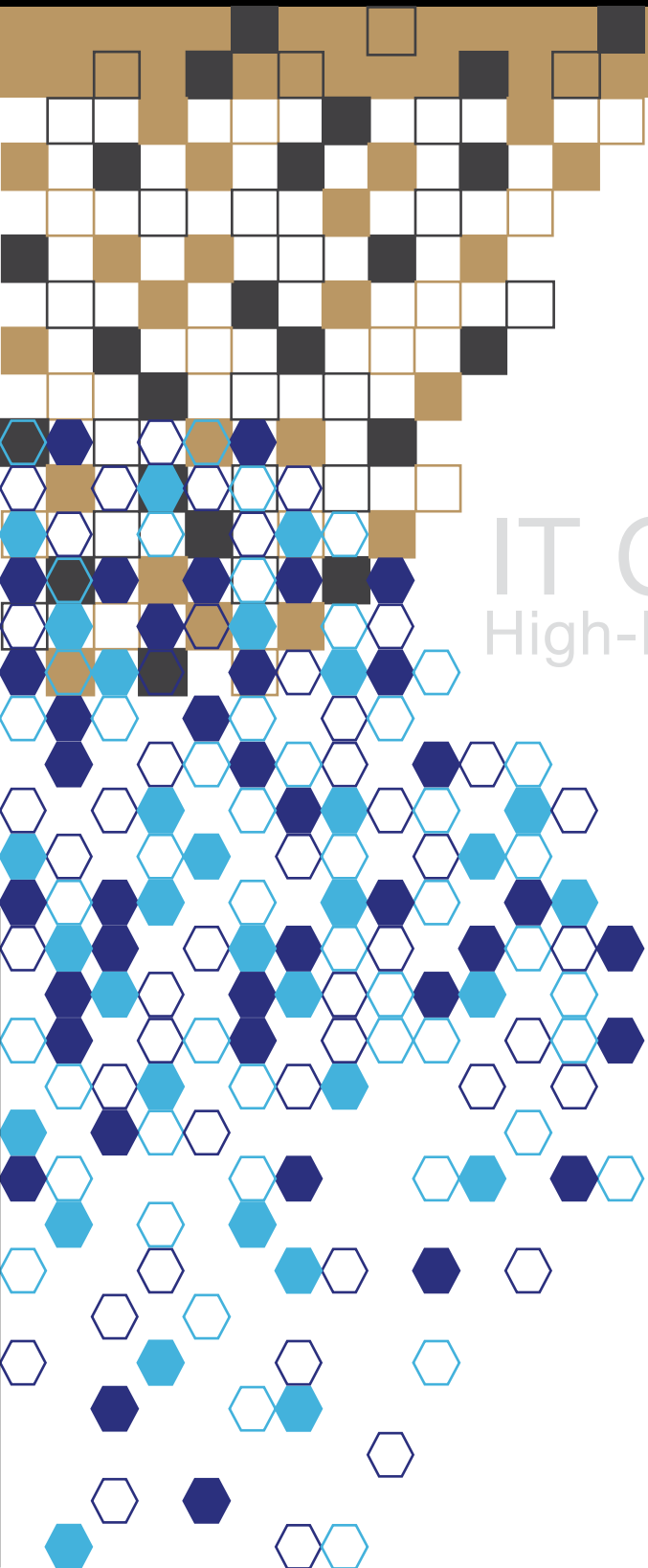
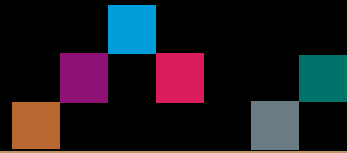


SIGNAMAX



IT Cabling Solutions
High-Performance Copper Systems

HITACHI
Inspire the Next

Shared Vision

As an Open System Architecture commitment, Signamax and Hitachi have collaborated to offer a number of high performing Ethernet solutions. Supporting up to 10 gigabit Ethernet, the Signamax/Hitachi solutions are backed by system quality assurance testing based on the worst case model - four connector - 100 meter channel specified by the leading ANSI and IEC structured cabling standards.

Relevance of a Structured Cabling System

If it's part of the link and the lifeline that keeps your networks running, then it's covered by the Signamax/Hitachi 25-Year Cabling System Limited Warranty. From our patch panels and 110 cross connect systems to our outlet products and the cable that links it all together, our warranty program gives you the assurance that you need in the constantly changing world of network technology.

Complete Solution Warranty

- System is covered for material and labor for 25-years from date installation is approved and registered with SIGNAMAX/HITACHI
- Meet or exceed all applicable ANSI, TIA and ISO standards
- Support any current or future application design to operate over the applicable system
- Quickly be repaired, replaced, or refunded

SIGNAMAX / HITACHI STRUCTURED CABLING SOLUTIONS

**Category 5e, 6 & 6A
High Performance
Copper Systems**

**Exceeding All Industry
Standards**

**Offering A Complete
25-Year Warranty**

SIGNAMAX

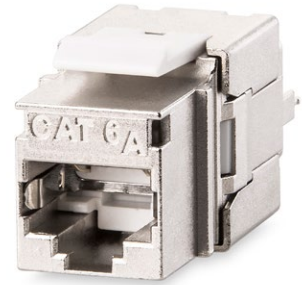
HITACHI
Inspire the Next

CAT

6A

Category 6A Shielded Solution

Category 6A MT-Series Shielded Keystone Jacks



PART NO.	DESCRIPTION
KJS458MT-C6AC	Category 6A MT-Series Shielded Keystone Jack, T568A/B Wiring

Category 6A MT-Series Shielded Patch Panels



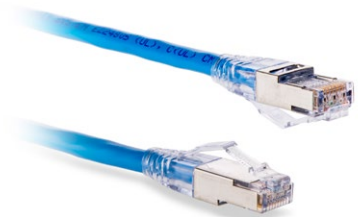
PART NO.	DESCRIPTION
24458S-C6A	24-Port Category 6A MT-Series Shielded Patch Panel, 1.75"H
48458S-C6A	48-Port Category 6A MT-Series Shielded Patch Panel, 3.50"H

Category 6A Shielded Patch Cords

PART NO.	DESCRIPTION
C6AS-314CC-LFB	Category 6A Shielded Patch Cord with Snap-Proof Boots

CC = Cable jacket color available in the following: **BK** **-BU** **-GY** **-RD** **-WH** **-YE**

L= Patch Cord length available in the following: 3 ft, 5 ft, 7 ft, 10 ft, 15 ft, 20 ft, 25 ft

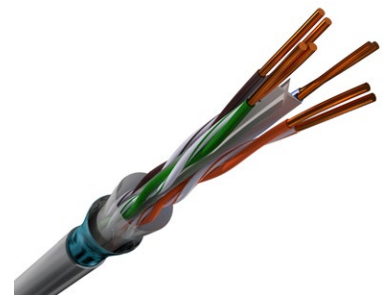


Hitachi Category 6A Supra 10G™ F/UTP Shielded Cable

PART NO.	DESCRIPTION
30233-8-XX3	Category 6A Supra 10G™ F/UTP CMP (Plenum) Cable
30234-8-XX3	Category 6A Supra 10G™ F/UTP CMR (Riser) Cable

For cable color substitute XX for color in P/N for color code: **BK** **-BL** **-GR** **-GA** **-RD** **-WH** **-YE**

3 = 1000 ft Reels



CAT 6A Category 6A Solution

Category 6A MT-Series Keystone Jacks

PART NO.	DESCRIPTION
KJS458MT-C6AC	Category 6A MT-Series Keystone Jack, T568A/B Wiring, Light Ivory

Jacks are available in the following colors: **-BK** **-BU** **-GN** **-GY** **-OR** **-RD** **-WH** **-DI** **-YE**



Category 6A MD-Series Patch Panels

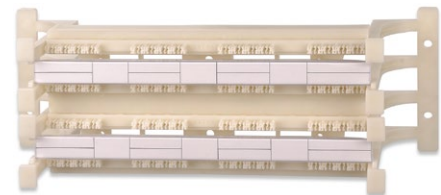


PART NO.	DESCRIPTION
24458MD-C6AC	24-Port Category 6A MD-Series Patch Panel, 1.75"H
48458MD-C6AC	48-Port Category 6A MD-Series Patch Panel, 3.50"H

Category 6A 110 Wiring Blocks

PART NO.	DESCRIPTION
110WB6A-64PR-L	Category 6A 64-Pair 110 Wiring Block With Mounting Legs
110CB6-4PR	Category 6A/6 4-Pair 110 IDC Connecting Blocks, Package of 10

Also available with 32-pair and 192-pair 110 Wiring Blocks.



Category 6A Patch Cords

PART NO.	DESCRIPTION
C6A-114CC-LFB	Category 6A Patch Cord with Snap-Proof Boots

CC = Cable jacket color available in the following: **BK** **-BU** **-GY** **-RD** **-WH** **-YE**

L = Patch Cord length available in the following: 3 ft, 5 ft, 7 ft, 10 ft, 15 ft, 20 ft, 25 ft

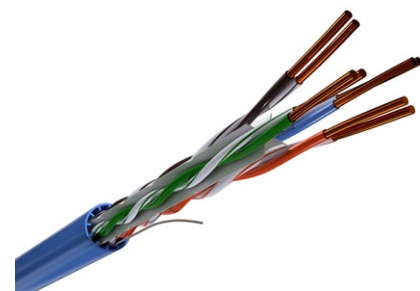


Hitachi Category 6A Supra 10G-XE™ U/UTP Unshielded

PART NO.	DESCRIPTION
30303-8-XX3	Category 6A Supra 10G-XE™ U/UTP CMP (Plenum) Cable
30304-8-XX3	Category 6A Supra 10G-XE™ U/UTP CMR (Riser) Cable

For cable color substitute XX for color in P/N for color code: **BK** **-BL** **-GR** **-GA** **-RD** **-WH** **-YE**

3 = 1000ft Reels



CAT 6 Category 6 Solution

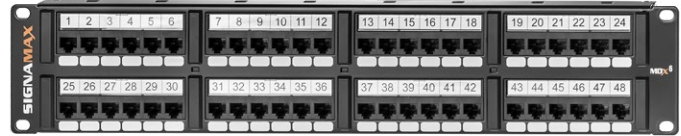
Category 6 MT-Series Keystone Jacks



PART NO.	DESCRIPTION
KJ458MT-C6C	Category 6 MT-Series Keystone Jack, T568A/B Wiring, Light Ivory

Jacks are available in the following colors: **-BK** **-BU** **-GN** **-GY** **-OR** **-RD** **-WH** **-DI** **-YE**

Category 6 MDX-Series Patch Panels

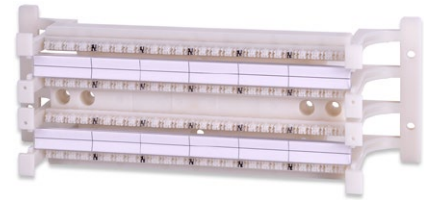


PART NO.	DESCRIPTION
24458MDX-C6	24-Port Category 6 MDX-Series Patch Panel, 1.75"H
48458MDX-C6	48-Port Category 6 MDX-Series Patch Panel, 3.50"H

Category 6 110 Wiring Blocks

PART NO.	DESCRIPTION
110WB6-96PR-L	Category 6 96-Pair 110 Wiring Block With Mounting Legs
110CB6-4PR	Category 6A/6 4-Pair 110 IDC Connecting Blocks, Package of 10

Also available with 48-pair and 288-pair 110 Wiring Blocks.



Category 6 Patch Cords

PART NO.	DESCRIPTION
C6C-114CC-LFB	Category 6 Patch Cord with Snap-Proof Boots

CC = Cable jacket color available in the following: **BK** **-BU** **-GN** **-GY** **-OR** **-RD** **-WH** **-YE**

L = Patch Cord length available in the following: 3 ft, 5 ft, 7 ft, 10 ft, 15 ft, 20 ft, 25 ft



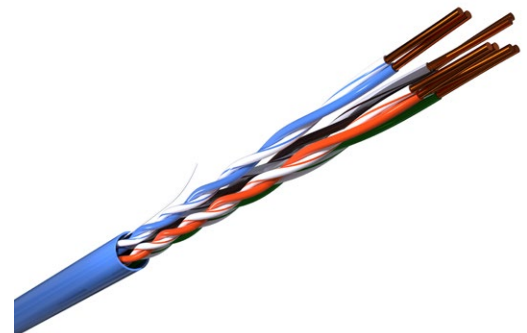
Hitachi Category 6 U/UTP Unshielded Cable

PART NO.	DESCRIPTION
30016-8-XX3	Category 6 Supra 660™ U/UTP CMP (Plenum) Cable
30022-8-XX3	Category 6 Supra 660™ U/UTP CMR (Riser) Cable
30183-8-XX2	Category 6 Premium U/UTP CMP (Plenum) Cable
30212-8-XX2	Category 6 Premium U/UTP CMR (Riser) Cable
30025-8-XX2	Category 6 Plus™ U/UTP CMP (Plenum) Cable
30024-8-XX2	Category 6 Plus™ U/UTP CMR (Riser) Cable
30237-8-XX2	Category 6 XS™ U/UTP CMP (Plenum) Cable
30238-8-XX2	Category 6 XS™ U/UTP CMR (Riser) Cable

For cable color substitute XX for color in P/N for color code: **BK** **-BL** **-GR** **-GA** **-RD** **-WH** **-YE**

For packaging substitute Y in P/N for the following:

2 = 1000 ft Reelex Boxes 3 = 1000 ft Reels



Category 5e MT-Series Keystone Jacks



PART NO.	DESCRIPTION
KJ458MT-C5E	Category 5e MT-Series Keystone Jack, T568A/B Wiring, Light Ivory

Jacks are available in the following colors: **-BK** **-BU** **-GN** **-GY** **-OR** **-RD** **-WH** **-DI** **-YE**

Category 5e MDX-Series Patch Panels

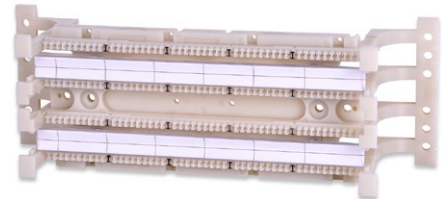


PART NO.	DESCRIPTION
24458MDX-C5E	24-Port Category 5e MDX-Series Patch Panel, 1.75"H
48458MDX-C5E	48-Port Category 5e MDX-Series Patch Panel, 3.50"H

Category 5e 110 Wiring Blocks

PART NO.	DESCRIPTION
110WB-100PR-L	Category 5e 100-Pair 110 Wiring Block With Mounting Legs
110CB-4PR	Category 5e 4-pair 110 IDC Connecting Clip

Available with 50-pair and 300-pair 110 Wiring Blocks.



Category 5e Patch Cords

PART NO.	DESCRIPTION
C5E-114CC-LFB	Category 5e Patch Cord with Snap-Proof Boots

CC = Cable jacket color available in the following: **-BK** **-BU** **-GN** **-GY** **-OR** **-RD** **-WH** **-YE**

L = Patch Cord length available in the following: 3 ft, 5 ft, 7 ft, 10 ft, 15 ft, 20 ft, 25 ft



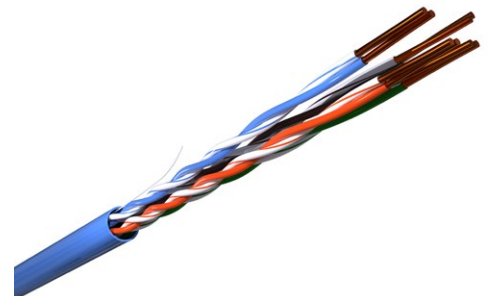
Category 5e Hitachi U/UTP Unshielded Cable

PART NO.	DESCRIPTION
38891-8-XX2	Category 5e 350™ U/UTP CMP (Plenum) Cable
38893-8-XX2	Category 5e 350™ U/UTP CMR (Riser) Cable
39419-8-XX2	Category 5e U/UTP CMP (Plenum) Cable
38696-8-XX2	Category 5e U/UTP CMR (Riser) Cable

For cable color substitute XX in P/N for color code: **-BK** **-BL** **-GA** **-RD** **-WH** **-YE**

For packaging substitute Y in P/N for the following:

2 = 1000 ft Reelex Boxes



Keeping Your W



SIGNAMAX & **HITACHI** World-class, High Performance & Reliability Structured Cabling Systems

**CALL YOUR SIGNAMAX OR HITACHI
REPRESENTATIVE TODAY**

In today's technology-driven environment, Signamax Connectivity Systems has established its mission to provide the highest quality products to keep your business connected. The strength and integrity of our products is backed by the skills and experience of our technical staff. Our equipment is manufactured to the highest quality, engineered to meet stringent standards, and designed for the most demanding applications. Signamax delivers the features and benefits to run a successful, reliable, and rapid network.

Since 1986, Hitachi Cable America has been developing technologically advanced copper and fiber optic communication cables. Our dedication to engineering perfection is evident in the consistent quality and performance of all the cable products we manufacture. Through the development of high-performance cable products, such as the world's first UL verified 10-gigabit Ethernet Category 6A cable, Hitachi Cable America has established itself as a leader in the industry.

SIGNAMAX[®]

999 N.W. 159th Drive, Miami, FL 33169.
Tel: +1.800.446.2377
www.signamax.com

HITACHI
Inspire the Next

900 Holt Avenue, Manchester, New Hampshire 03109 USA
Tel: +1-603-669-4347
www.hca.hitachi-cable.com