

SIGNAMAX

IT Cabling Solutions
High-Performance Copper Systems



 **SUPERIOR
ESSEX**

Shared Vision

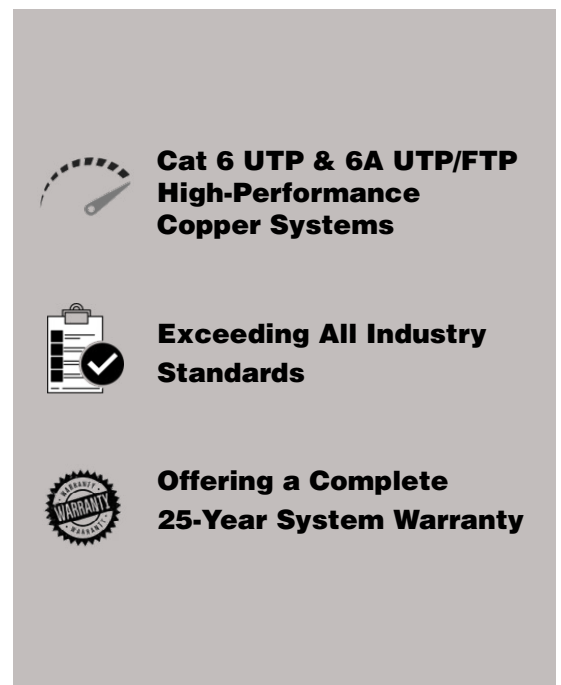
As an Open System Architecture commitment, Signamax and Superior Essex have collaborated to offer a number of high performing Ethernet solutions. Supporting up to 10 gigabit Ethernet, the Signamax/Superior Essex solutions are backed by system quality assurance testing based on the worst case model - four connector -100 meter channel specified by the leading ANSI and IEC structured cabling standards.


Relevance of a Structured Cabling System


If it's part of the link and the lifeline that keeps your networks running, then it's covered by the Signamax/Superior Essex 25-Year Cabling System Limited Warranty. From our patch panels and 110 cross connect systems to our outlet products and the cable that links it all together, our warranty program gives you the assurance that you need in the constantly changing world of network technology.


Complete Solution Warranty

- System is covered for material and labor for 25-years from date installation is approved and registered with SIGNAMAX/SUPERIOR ESSEX .
- Warranty assures your system will be free from defects, and will meet or exceed all applicable ANSI, TIA and ISO standards (in effect at the time).
- Will support any current or future application design to operate over the applicable cabling system.



 **Cat 6 UTP & 6A UTP/FTP High-Performance Copper Systems**

 **Exceeding All Industry Standards**

 **Offering a Complete 25-Year System Warranty**



Category 6A MT-Series Shielded Keystone Jacks



PART NO.	DESCRIPTION
KJS458MT-C6AC	Category 6A MT-Series Shielded Keystone Jack, T568A/B Wiring

Category 6A MT-Series Shielded Patch Panels



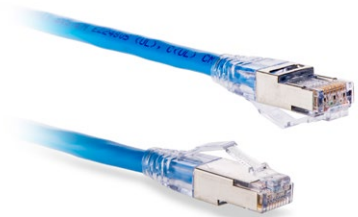
PART NO.	DESCRIPTION
24458S-C6A	24-Port Category 6A MT-Series Shielded Patch Panel, 1.75"H
48458S-C6A	48-Port Category 6A MT-Series Shielded Patch Panel, 3.50"H

Category 6A Shielded Patch Cords

PART NO.	DESCRIPTION
C6AS-314CC-LFB	Category 6A Shielded Patch Cord with Snap-Proof Boots

CC = Cable jacket color available in the following: -BK -BU -GY -RD -WH -YE

L= Patch Cord length available in the following: 3 ft, 5 ft, 7 ft, 10 ft, 15 ft, 20 ft, 25 ft



Superior Essex 10Gain® + Category 6A F/UTP Shielded

PART NO.	DESCRIPTION
6B-246-xA	Category 6A 10Gain® F/UTP CMR (Riser) Cable
6B-272-xA	Category 6A 10Gain® F/UTP CMR (Riser) Cable
6B-246-xB	Category 6A 10Gain® F/UTP CMP (Plenum) Cable
6B-272-xB	Category 6A 10Gain® F/UTP CMP (Plenum) Cable

For color substitute X in P/N for color code:



246 = 1000 ft BrakeBox®

272 = 1000 ft Plywood Reel



CAT 6A Category 6A Solution

Category 6A MT-Series Keystone Jacks



PART NO.	DESCRIPTION
KJS458MT-C6AC	Category 6A MT-Series Keystone Jack, T568A/B Wiring, Light Ivory

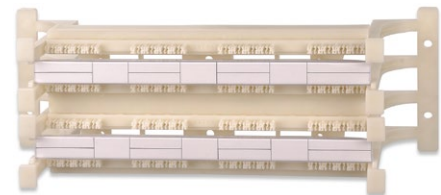
Jacks are available in the following colors: -BK -BU -GN -GY -OR -RD -WH -DI -YE

Category 6A MD-Series Patch Panels



PART NO.	DESCRIPTION
24458MD-C6AC	24-Port Category 6A MD-Series Patch Panel, 1.75"H
48458MD-C6AC	48-Port Category 6A MD-Series Patch Panel, 3.50"H

Category 6A 110 Wiring Blocks



PART NO.	DESCRIPTION
110WB6A-64PR-L	Category 6A 64-Pair 110 Wiring Block With Mounting Legs
110CB6-4PR	Category 6A/6 4-Pair 110 IDC Connecting Blocks, Package of 10

Also available with 32-pair and 192-pair 110 Wiring Blocks.

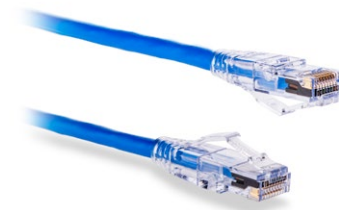
Category 6A Patch Cords

PART NO.	DESCRIPTION
C6A-114CC-LFB	Category 6A Patch Cord with Snap-Proof Boots

CC = Cable jacket color available in the following:

-BK -BU -GY -RD -WH -YE

L = Patch Cord length available in the following: 3 ft, 5 ft, 7 ft, 10 ft, 15 ft, 20 ft, 25 ft



Superior Essex 10Gain® Category 6A U/UTP Unshielded Cable

PART NO.	DESCRIPTION
6A-272-xA	Category 6A 10Gain® U/UTP CMR (Riser) Cable
6A-246-xB	Category 6A 10Gain® U/UTP CMP (Plenum) Cable
6A-272-xB	Category 6A 10Gain® U/UTP CMP (Plenum) Cable



For color substitute X in P/N for color code:

-2 -3 -4 -5 -6 -7 -9 -D -E

246 = 1000 ft BrakeBox®

272 = 1000 ft Plywood Reel

CAT 6 Category 6 Solution

Category 6 MT-Series Keystone Jacks

PART NO.	DESCRIPTION
KJ458MT-C6C	Category 6 MT-Series Keystone Jack, T568A/B Wiring, Light Ivory

Jacks are available in the following colors: -BK -BU -GN -GY -OR -RD -WH -DI -YE



Category 6 MDX-Series Patch Panels

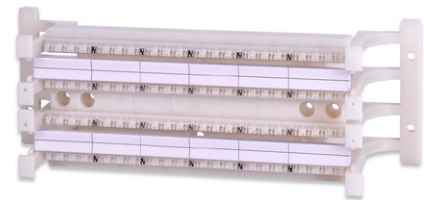


PART NO.	DESCRIPTION
24458MDX-C6	24-Port Category 6 MDX-Series Patch Panel, 1.75"H
48458MDX-C6	48-Port Category 6 MDX-Series Patch Panel, 3.50"H

Category 6 110 Wiring Blocks

PART NO.	DESCRIPTION
110WB6-96PR-L	Category 6 96-Pair 110 Wiring Block With Mounting Legs
110CB6-4PR	Category 6A/6 4-Pair 110 IDC Connecting Blocks, Package of 10

Also available with 48-pair and 288-pair 110 Wiring Blocks.



Category 6 Patch Cords

PART NO.	DESCRIPTION
C6C-114CC-LFB	Category 6 Patch Cord with Snap-Proof Boots

CC = Cable jacket color available in the following:

-BK -BU -GY -GR -RD -WH -OR -YE

L = Patch Cord length available in the following: 3 ft, 5 ft, 7 ft, 10 ft, 15 ft, 20 ft, 25 ft



Superior Essex DataGain® Category 6+ U/UTP Unshielded

PART NO.	DESCRIPTION
66-246-xA	Category 6+ DataGain® U/UTP CMR (Riser) Cable
66-272-xA	Category 6+ DataGain® U/UTP CMR (Riser) Cable
66-240-xA	Category 6+ DataGain® U/UTP CMR (Riser) Cable
66-246-xB	Category 6+ DataGain® U/UTP CMP (Plenum) Cable
66-272-xB	Category 6+ DataGain® U/UTP CMP (Plenum) Cable
66-240-xB	Category 6+ DataGain® U/UTP CMP (Plenum) Cable

For color substitute X in P/N for color code:

-2 -3 -4 -5 -6 -7 -9 -C -D -E

246 = 1000 ft BrakeBox®

240 = 1000 ft PoP Box™

272 = 1000 ft Plywood Reel





Keeping Your World Connected

CALL YOUR SIGNAMAX OR SUPERIOR ESSEX REPRESENTATIVE TODAY

In today's technology-driven environment, Signamax Connectivity Systems has established its mission to provide the highest quality products to keep your business connected. The strength and integrity of our products is backed by the skills and experience of our technical staff. Our equipment is manufactured to the highest quality, engineered to meet stringent standards, and designed for the most demanding applications. Signamax delivers the features and benefits to run a successful, reliable, and rapid network.

Superior Essex Communications is a leading manufacturer and supplier of communications cable in North America. It is on the forefront of innovation through Power over Ethernet, Intelligent Buildings and Cities, 5G Fiber infrastructure including Hybrid and Composite solutions, as well as technological advancements being made at its Product Development Center. Superior Essex Communications is also setting the pace on sustainability by being the first company with a Zero Waste to Landfill Certification at its Hoisington (KS) plant; the first wire and cable producer to contribute points to LEED certification, and the first to offer verified sustainable cables in over 50 products. Superior Essex Communications is Everywhere You Live and Work®.

SIGNAMAX®

999 N.W. 159th Drive, Miami, FL 33169.
Tel: 800.446.2377
www.signamax.com

 **SUPERIOR ESSEX**®

5770 Powers Ferry Rd NW, Suite 400 Atlanta GA, 30327
Tel: +1-770-657-6000
www.superioressexcommunications.com