



**C-300 SERIES**  
Managed Ethernet Switches

**SIGNAMAX**

**NETWORK SOLUTIONS**



# C-300 SERIES

## Managed Ethernet Switches

The Signamax C-300 series of fully managed switches delivers full Layer 2 capabilities with enhanced access security, ACLs, traffic prioritization, and IPv6 support. The security & reliability provided by this series is ideal for branch and campus implementations.

The C-300 Series switches are built from the ground up for easy deployment and management without compromising any of the power and flexibility traditionally found in enterprise-class switches.

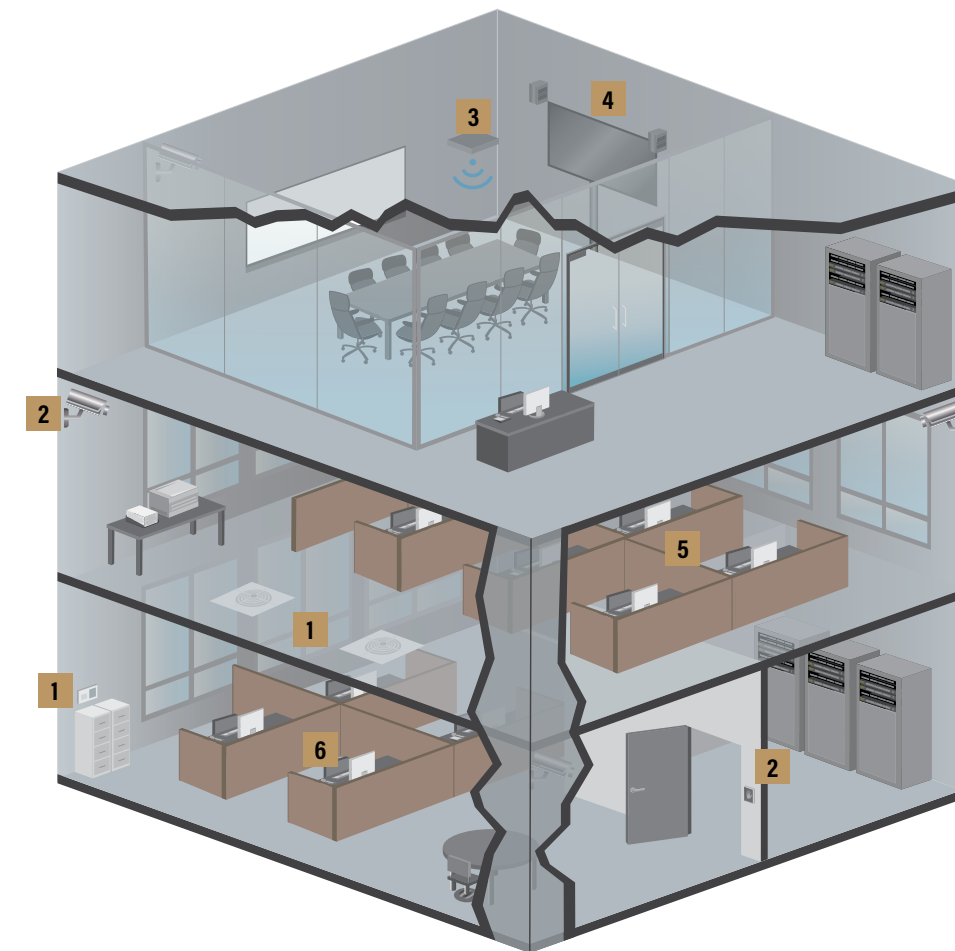


- Cost-effective, reliable, and secure Layer 2 switches
- Non-blocking switches with up to 104 Gbps bandwidth support
- Fanless design on selected models for silent operation
- Up to 740 watts PoE budget with PoE+ support and dynamic power allocation for powering APs, phones, cameras, and other PoE-enabled devices
- 8 dedicated QoS queues for converged voice, video, and data applications
- Integrated mounting brackets for rack installation
- SFP uplink interfaces on all models
- Static IP routing & RIP support
- Low power consumption, quiet acoustic design, and shallow rack depth options, enabling flexible deployment in wiring closets as well as offices and classrooms
- 5 year hardware warranty & support at no additional cost

## The C-300 Series Capabilities

The C-300's reliable architecture and simplified management is ideal for use in critical networks such as Physical Security and Building Automation like shown below in the illustration of a typical enterprise in a multi-level building. Powerful packet handling with the comprehensive suite of security and Quality of Service functionality is optimal for any enterprise data network.

The security and QoS segmentation capabilities enable a network convergence of data, VoIP, physical security, and building automation. When the solution leads to separate networks, those networks can be easily deployed and managed through the simplified management system.

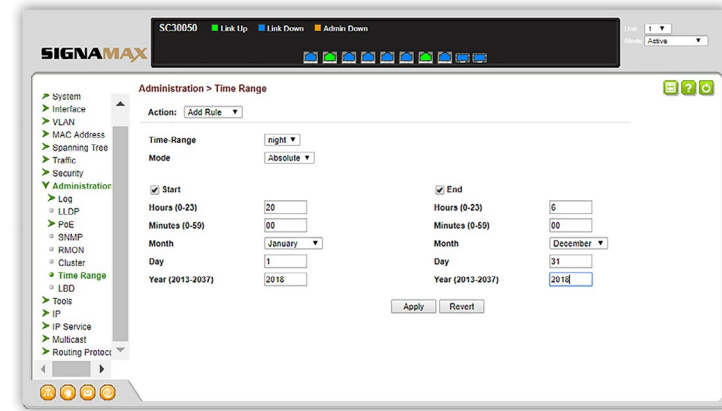


1. Next generation building automation systems include multiple sensors, controllers, and output devices such as variable air volume units (VAV) that are all connected to the network and need a reliable and secure infrastructure that's easy to install and monitor.
2. Security cameras and access control systems require flexible PoE options and unlike traditional enterprise network devices, they often are placed in unsecured locations which is why the C-300 Series includes enhanced security features such as Port Security, MAC Authentication, ACLs, and 802.1X port-based access control.
3. The C-300 PoE+ models supply connectivity and power to wireless APs with 30 watts of PoE+ per port and non-blocking, high performance packet forwarding.
4. AudioVideo is the latest industry to migrate to standard LAN for connectivity, but it's extremely sensitive to bandwidth and latency which is why the C-300 Series supports a comprehensive suite of Quality of Service features as well as powerful packet forwarding capabilities.
5. Enterprise networks are being used for more and more devices, but traditional data is still business-critical and requires security, resiliency, and flexibility in the network.
6. Deploying VoIP networks with the C-300 Series is simplified by using Auto Voice VLANs for security and Quality of Service.

## Features for deployment in any solution.

### INTELLIGENT POE:

The C-300 series includes several PoE options, all of which support PoE+ up to 30W on all ports. The SC30050 is a full-PoE fanless design which can provide a total of 125W while the SC30020 delivers a default 370W but can be extended up to 740W using a AP50010 power chassis. The innovative PoE scheduling allows the administrator complete control and flexibility regarding the power provided. The C-300 series supports dynamic power allocation and PoE ports can be individually configured for prioritization, scheduling, and consumption.



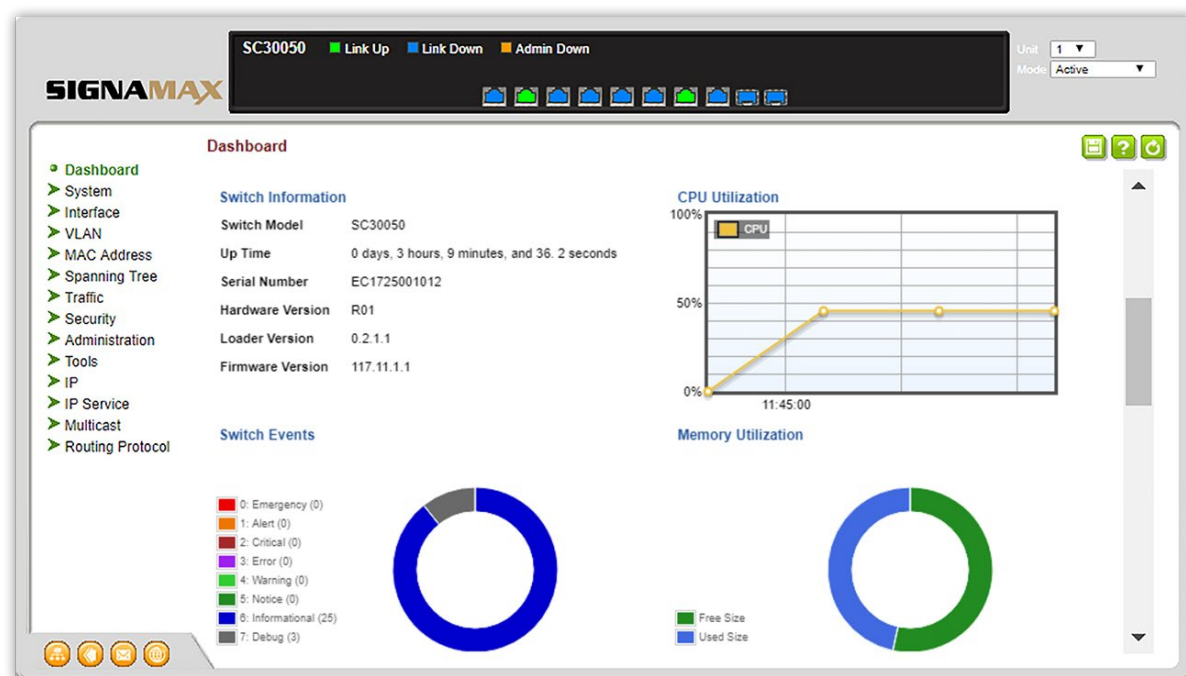
### ENTERPRISE GRADE:

The C-300 Series runs a sophisticated operating system that provides a variety of advanced features including:

- Static Routing and RIP
- Dynamic VLAN assignment and Auto Voice VLAN
- Link Aggregation (LACP)
- IGMP and MLD snooping
- 802.3az and Green-Ethernet

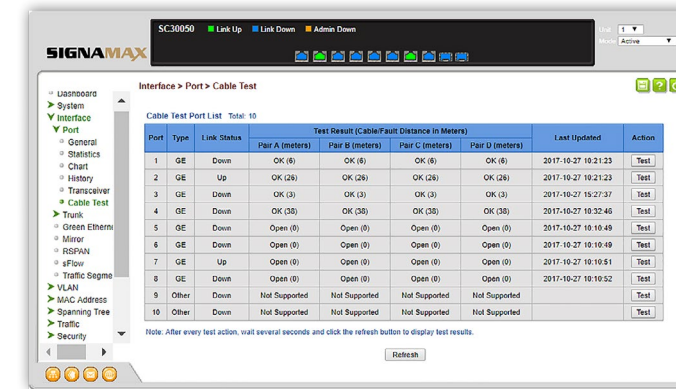
### SIMPLIFIED MANAGEMENT:

The easy to use C-300 Graphical User Interface includes an intuitive dashboard that provides a unified view of event logs, traffic statistics, and monitoring which simplifies managing and growing network deployments. The C-300 Series switches can be fully deployed in minutes, and there is no need for a console cable or any command line configuration to get started or even recover from misconfiguration. The auto firmware upgrade feature ensures the network is kept up-to-date with bug fixes, security updates, and new features without overburdening the network administrator.



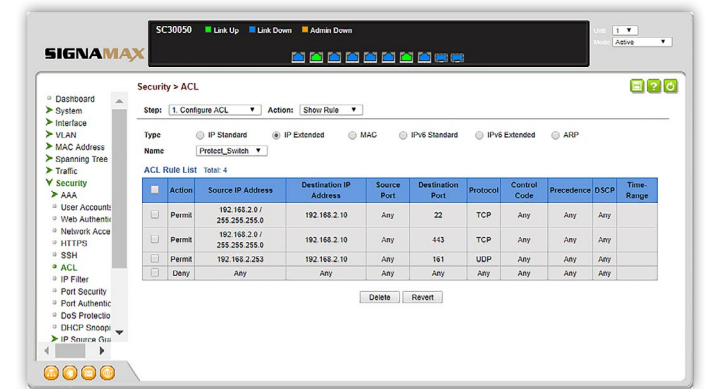
### DIAGNOSTICS:

The C-300 includes several powerful diagnostic capabilities including real-time cable testing, automatic Power On Self Test, a diagnostics LED, dual firmware and configuration files, and Digital Diagnostic Monitoring (DDM). Port Mirroring and sFlow can be used for gaining visibility into network activity from the edge to the core. The C-300 also includes network utilities for connectivity testing.



### ENHANCED SECURITY:

The C-300 series includes sophisticated security features such as DDOS protection, Port Security, MAC authentication, ACLs and 802.1X port-based access control. SSH and SSL/HTTPS encryption provide secure network management.

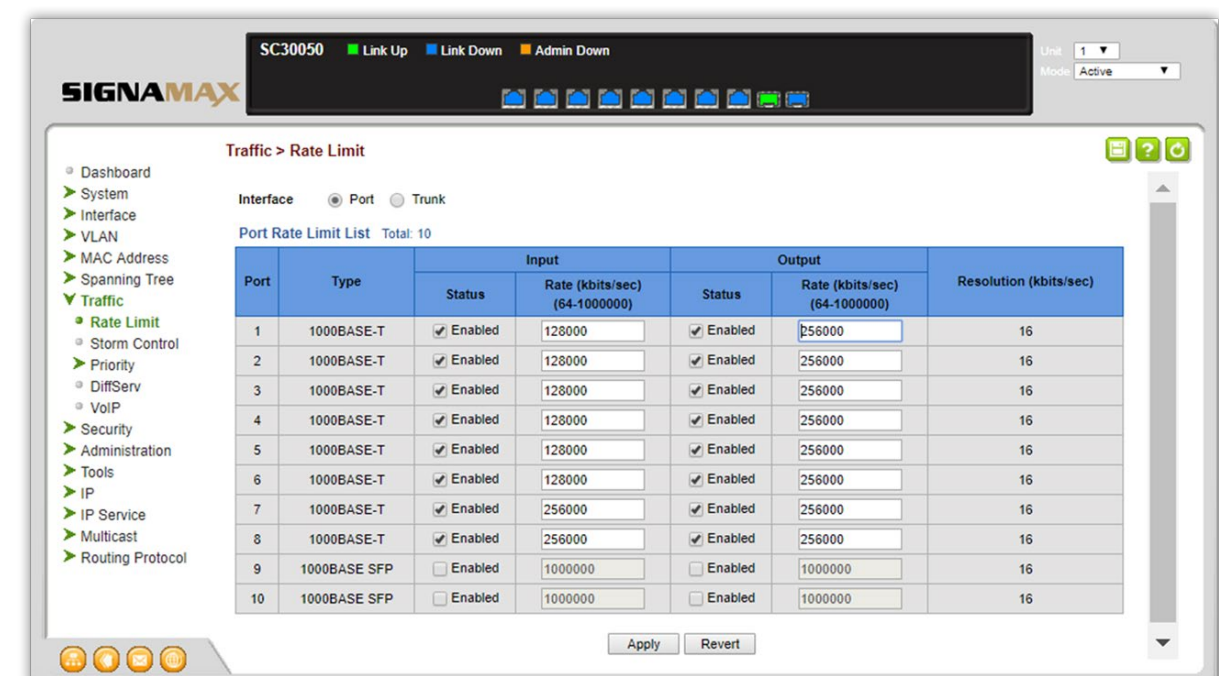


### FIBER CONNECTIVITY:

All C-300 Series switches include fiber connectivity options for your growing networks. The 24 and 48 port models include four SFP ports while the 8 port models include two SFP ports, each providing up to 1 Gbps uplinks.




### QUALITY OF SERVICE (QoS):

Traffic prioritization (IEEE 802.1p) allows real-time traffic classification with eight egress queues and uses weighted round robin (WRR), strict priority or Hybrid QoS. The C-300 Series simplifies QoS configuration by allowing prioritization by port or VLAN. Class of Service (CoS) sets the IEEE 802.1p priority tag based on IP address, IP Type of Service (ToS), Layer 3 protocol, TCP/UDP port number, source port, and DiffServ. Rate limiting establishes per-port ingress/egress maximums for all traffic or for broadcast, multicast, or unknown destination traffic, and flow control helps deliver reliable communication during full-duplex operation.





## C-300 Series Models & Specifications

PART NUMBER		SC30010	SC30020	SC30030
<b>Switches</b>				
<b>Ports</b>	RJ-45 10/100/1000 Ports	48	24	24
	SFP Uplink Ports	4	4	4
	PoE Ports	X	24	24
<b>PoE</b>	PoE Budget	X	370W (740W with AP50010)	200W
	Switching Capacity	104Gbps	56Gbps	56Gbps
<b>Performance</b>	Forwarding Rate	77.4Mpps	41.7Mpps	41.7Mpps
	MAC Address Table	16K	8K	8K
	Max Power Consumption	40W	490W	260W
<b>Electrical &amp; Environmental</b>	Acoustic Noise	54.2 dB (A)	49.7 dB (A)	46.1 dB(A)
	Heat Dissipation	136 (Btu/H)	1679 (Btu/H)	887 (Btu/H)
	MTBF	534K hrs	370K hrs	681K hrs
	Operating Temperature	32 to 122 °F (0 to 50 °C)	32 to 113 °F (0 to 45 °C)	32 to 122 °F (0 to 50 °C)
<b>Physical Characteristics</b>	Dimensions	17.3 x 8.6 x 1.7 in (44 x 22 x 4.4 cm)	17.3 x 8.6 x 1.7 in (44 x 22 x 4.4 cm)	17.3 x 8.6 x 1.7 in (44 x 22 x 4.4 cm)
	Weight	5.51 lb (2.5 kg)	6.85 lb (3.1 kg)	6.18 lb (2.8 kg)
	Fanless	-	-	-

## Specifications

### PERFORMANCE

- Up to 16K MAC Addresses
- 256MB DRAM
- Up to 12Mb Packet Buffer
- 32MB Flash memory
- Supports 10K Jumbo Frames
- Wirespeed forwarding
- IPv4/IPv6 Dual Protocol Stack

### SECURITY

- DDOS Protection
- CPU Guard (CPU Protection)
- Port Isolation
- Storm Control
- Broadcast/Multicast/Unknown Storm Control
- Up to 512 Access Control Lists (ACL) based on L2/L3/L4
- Port Security
- MAC Authentication
- Dynamic ARP Inspection
- AAA (IEEE 802.1X RADIUS/TACACS+)
- IP Source Guard
- Web Authentication
- DHCP Snooping
- Encrypt switch access with SSH and SSL

### LAYER 3

- Up to 56 Static routes
- RIPv1/RIPv2 (apart from SC30010)
- DHCP v4/v6 Client / DHCP Relay
- Static Multicast Routing

### LAYER 2

- SFP ports support IEEE 802.3u (100FX), 802.3z (1000SX/LX/LHX/ZX)
- IEEE 802.3x Flow Control

#### Spanning Tree:

- IEEE 802.1D Spanning Tree Protocol (STP),
- IEEE 802.1w Rapid Spanning Tree Protocol (RSTP),
- IEEE 802.1s Multiple Rapid Spanning Tree Protocol (MSTP,64 instances)

- Loopback Detection
- BPDU Filter/Guard
- BPDU Forward
- Root Guard




#### Up to 4094 IEEE 802.1Q (802.3ac) VLANs:

- Port-Based/MAC-Based/Protocol-Based(IEEE 802.1v)
- Guest VLAN
- Auto Voice VLAN
- Dynamic VLAN Assignment
- 802.3ad Link Aggregation (static and LACP)

#### Multicast:

- IGMP v1/v2/v3 snooping
- IGMP Filtering/Throttling:
- IGMP Queries
- IGMP Immediate leave
- MLD Snooping
- mDNS

- IEEE 802.1AB LLDP/LLDP-MED
- IEEE 802.3az Energy Efficient Ethernet
- Q-in-Q

PART NUMBER		SC30040	SC30050	SC30060
<b>Switches</b>				
<b>Ports</b>	RJ-45 10/100/1000 Ports	24	8	8
	SFP Uplink Ports	4	2	2
	PoE Ports	X	8	X
<b>PoE</b>	PoE Budget	X	125W	X
	Switching Capacity	56Gbps	20Gbps	20Gbps
<b>Performance</b>	Forwarding Rate	41.7 Mpps	14.9Mpps	14.9Mpps
	MAC Address Table	8K	8K	8K
	Max Power Consumption	20W	160W	8W
<b>Electrical &amp; Environmental</b>	Acoustic Noise	0 dB (A)	0 dB (A)	0 dB(A)
	Heat Dissipation	68 (Btu/H)	546 (Btu/H)	27 (Btu/H)
	MTBF	564K hrs	546K hrs	554K hrs
	Operating Temperature	32 to 122 °F (0 to 50 °C)	32 to 104 °F (0 to 40 °C)	32 to 122 °F (0 to 50 °C)
<b>Physical Characteristics</b>	Dimensions	17.3 x 8.6 x 1.7 in (44 x 22 x 4.4 cm)	12.9 x 8 x 1.67 in (33 x 20.4 x 4.26 cm)	7.7 x 4.6 x 1.4 in (19.6 x 11.7 x 3.6 cm)
	Weight	4.86 lb (2.2 kg)	5.34 lb (2.4 kg)	1.81 lb (816 g)
	Fanless	Yes	Yes	Yes

### MANAGEMENT

- Web-based Graphical User Interface (GUI)
- Industry-standard CLI (Telnet/SSH) with context-sensitive help
- Console management port on the front panel for ease of access
- Switch Cluster allows up to 36 switches to be managed from a single switch
- Comprehensive SNMP MIB support for standards based device management
- Dual Image/Configuration
- RMON (groups 1,2,3 and 9)
- NTP/SNTP
- Auto Firmware Upgrade
- SNMP v1/v2/v3

### QoS

- Rate Limiting (Ingress/Egress Port-Based)
- Priority Queues Schedule (WRR/Strict Priority/Hybrid QoS)
- Port-Based QoS
- IPv4/IPv6 DSCP
- DiffServ
- Auto VOIP
- 8 HW Queues per port for 802.1p priority tagging
- Policy based dynamic QoS

### PoE

- Support IEEE 802.3af/IEEE802.3at on each port
- Dynamic Power Allocation
- PoE Scheduling

### DIAGNOSTIC TOOLS

- Diag LED
- Cable Test
- Digital Diagnostic Monitoring (DDM) on SFP Ports
- Ping polling for IPv4 and IPv6
- TraceRoute for IPv4 and IPv6
- Port Mirror (One to One, One to Many)
- Remote Mirror
- Event/Error Log/Syslog/SMTP Alerts
- SFlow
- SC30010 trace multi port
- Other models Trace on port -Ingress only

### ELECTRICAL CHARACTERISTICS

**Power Supply AC Input:** 100 - 240 V AC, 50/60 Hz

### ENVIRONMENTAL REQUIREMENTS

**Storage Temperature:** -40 to 158°F (-40 to 70°C)  
**Operating/Storage Humidity:** 10 to 90% (non-condensing)

### CERTIFICATIONS

**Emissions:** CE Mark: EN 55022, Class A; FCC Part 15 Class A  
**Immunity:** IEC 61000-3-3, 61000-4-2/3/4/5/6/11

### WARRANTY

Five Years (Including power supply)

# Ordering Information & Accessories



## ETHERNET SWITCHES

PART NO.	DESCRIPTION
SC30010	48 Port Gigabit Managed Switch
SC30020	24 Port Gigabit PoE+ Full Power Managed Switch
SC30030	24 Port Gigabit PoE+ Managed Switch
SC30040	24 Port Gigabit Managed Switch
SC30050	8 Port Gigabit PoE+ Managed Switch
SC30060	8 Port Gigabit Managed Switch

## ACCESSORIES

Power Chassis (SC30020 only)	
AP50010	C-300 Power Chassis
AP50020	460W Extended Power Supply (for use in AP50010 Power Chassis)
Cables	
AC30010	C-300 Series Console Cable
Replacement Mounting Kits	
AM30010	C-300 24 and 48 Port Switches Rack Mount Kit
AM30020	SC30050 Rack Mount Kit
AM30030	SC30060 Rack Mount Kit

## SFP MODULES

PART NO.	DESCRIPTION
065-79SXMG	1000SX Multi-Mode SFP Module 850nm up to 550m
065-79LXMG	1000LX Single-Mode SFP module 1310nm up to 10km
065-79ZXMG	1000ZX Single-Mode SFP Module 1550nm up to 80km
065-73FXMM5MG	100FX / OC-3 / STM-1 Multi-Mode SFP Module 1300nm up to 5km
065-73FXSM20MG	100FX / OC-3 / STM-1 Single-Mode SFP Module 1300nm up to 20km
065-791000TTXMG	10/100/1000TX SFP Module 100m span

For a complete list of SFP Modules visit [www.signamax.com](http://www.signamax.com).



# SIGNAMAX

999 NW 159th Drive, Miami, FL 33169  
T: 305-944-7710/800 446 2377 E: [sales@signamax.com](mailto:sales@signamax.com)

CONNECT WITH US



[www.signamax.com](http://www.signamax.com)

C300NS2018\_A-1-18