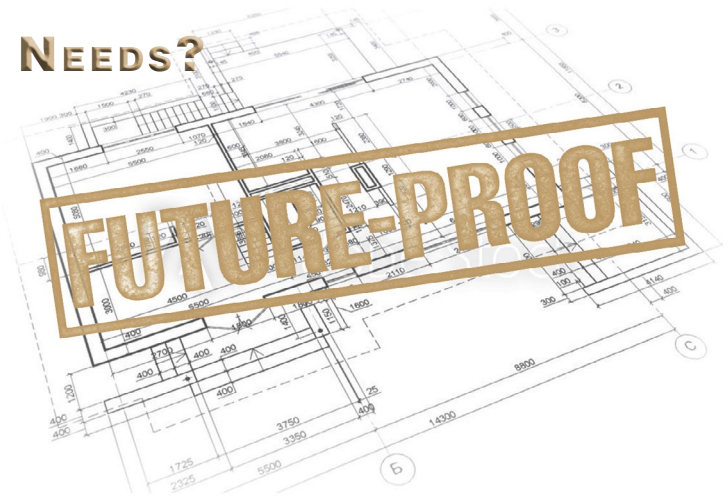


IS IT PLANNED FOR TODAY OR TOMORROW'S NEEDS?

■ The project has been awarded and the building is being designed, but have you planned far enough in the future for the backbone that will support the network? What are the crucial connections, what are the demands in speed, and how long will the system be viable?

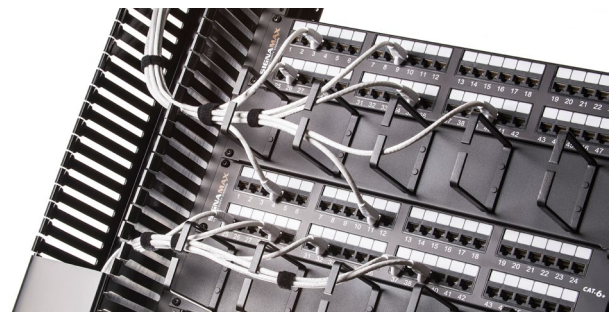


FUTURE-PROOF THE NETWORK with the Signamax Category 6A MD-Series Patch Panels offering 10 Gigabit performance for the full distance of Ethernet while reducing alien crosstalk. Designed to support applications from the data center to the work area, the Cat 6A MD-Series Patch Panel delivers advanced performance and reliability for future growth in the most demanding networks.

CATEGORY 6A MD-SERIES PATCH PANELS FEATURES:

Guaranteed 10GBase-T performance.

Exceeds ANSI/TIA-568-C.2 transmission specifications.
Meets IEEE 802.3an 10-Gigabit Ethernet transmission for up to 500 MHz in frequency.



Alien crosstalk elimination.

Built-in PCB-based jack modules ensure Cat 6A performance with Cat 6A cabling. Unique 110 connector orientation offers increase spacing for connector-to-connector isolation.



**THE NETWORK WILL ONLY WORK AS FAST
AS THE SLOWEST COMPONENT.**



CATEGORY 6A MD-SERIES PATCH PANELS ALSO FEATURES:

High density terminations & connections.

Easy to read T568 A/B wiring scheme color-coded label.
Effortless termination with a standard single-position 110 tool.
Port variations from 24 (1 RMU) to 48 (2 RMU).



Reliable plug-to-jack connection integrity.

Rated for up to 750 plug insertions.
Contact design protects against damage by 4 or 6 position plugs.
Panel manufactured with cold-rolled steel for maximum strength & durability.

Effortless organization and port identification.

Clear plastic hinged windows with port number designations.
Integrated with rear cable management bar for simple cable management.



ORDERING INFORMATION

| CATEGORY 6A | |
|--------------|--|
| PART NO. | DESCRIPTION |
| 24458MD-C6AC | 24-Port Category 6A MD-Series Patch Panel, 1.75" H |
| 48458MD-C6AC | 48-Port Category 6A MD-Series Patch Panel, 3.50" H |

KEEPING YOUR WORLD CONNECTED