

## INTEGRATION OF DIVERSITY



**Many species** will adapt to an ever changing environment. New features and characteristics will develop to engage new challenges. The unexpected abilities of the Signamax Jack Patch Panels may surprise you with the different configurations and applications you may not have expected.

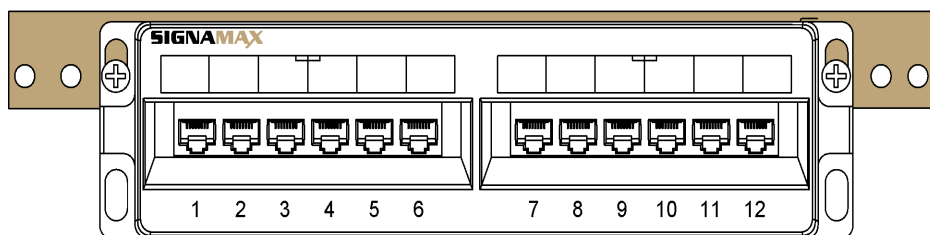
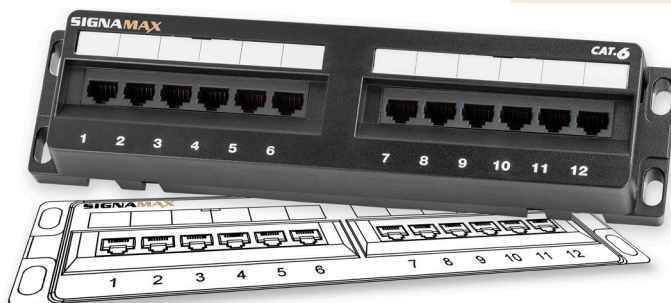
### CATEGORY 6 & 5E UNSCREENED JACK PATCH PANELS

#### FLUSH MOUNT: ALLOWS FOR THE LIMITED SPACE EQUATIONS TO BE ANSWERED

12458JPL-C

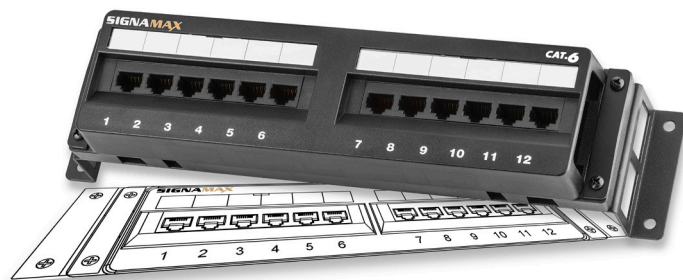
**Slim 1.5" profile makes it possible to fit in limited space of a home office.**

**Mountable on many different surfaces along a wall, backboard, or on an equipment rack flange.**



#### STAND-OFF LEG MOUNT: ALLOWS FOR SIGNIFICANT TASK REDESIGN

12458JPL-C-L

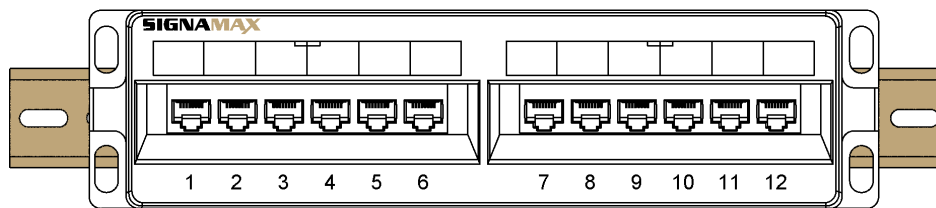


**Stand-off legs allow cable bundles to be routed behind the panel saving space in small commercial installations.**

**Knockouts along the sides creates accessibility from any direction for distribution cables.**

## DIN-RAIL MOUNT: ALLOWS FOR IMPLEMENTATION OF NEW TASKS PREVIOUSLY THOUGHT IMPROBABLE

12458JPL-C-DR

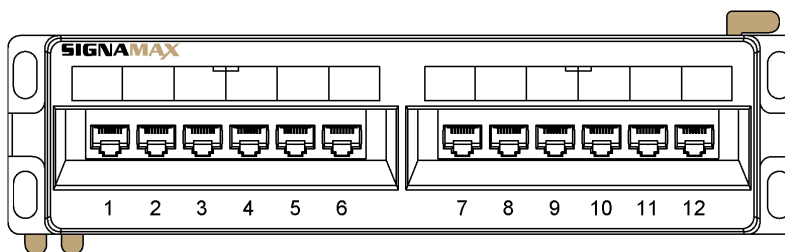


**DIN-Rail integrations allows the panel to be easily installed within a NEMA enclosure or industrial settings.**

**Designed as a fully enclosed PCB provides protection for the printed circuitry during termination.**

## 89D BRACKET MOUNT: ALLOWS FOR A SIMPLER INDUCTION INTO EXISTING FOUNDATIONS

12458JPL-C  
with SM66M1-89D



**89D Bracket compatibility offers an additional option for the flush mount to be installed into existing networks.**

**Simple snap release design allows access to cables beneath the panel offering trouble-free revisions.**

**Thinking outside the box** can open several options with the Signamax Jack Patch Panels. They can be adapted and used in a number of applications ranging from a plain surface-mount connection point in a small office or home office (SOHO) environment to an industrial DIN-rail mountable connectivity solution. This is the diversity your network is looking for to stay connected.



## ORDERING INFORMATION

PART NO.	DESCRIPTION
6458JPL-C	6-Port Jack Patch Panel, Flush Mount
6458JPL-C	6-Port Jack Patch Panel, Stand-off Legs
6458JPL-C	6-Port Jack Patch Panel, DIN-Rail Mount
12458JPL-C	12-Port Jack Patch Panel, Flush Mount
12458JPL-C	12-Port Jack Patch Panel, Stand-off Legs
12458JPL-C	12-Port Jack Patch Panel, DIN-Rail Mount

Specify category level by substituting the **C** in P/N for the following:  
**C6:** Category 6    **C5E:** Category 5e

KEEPING YOUR WORLD CONNECTED